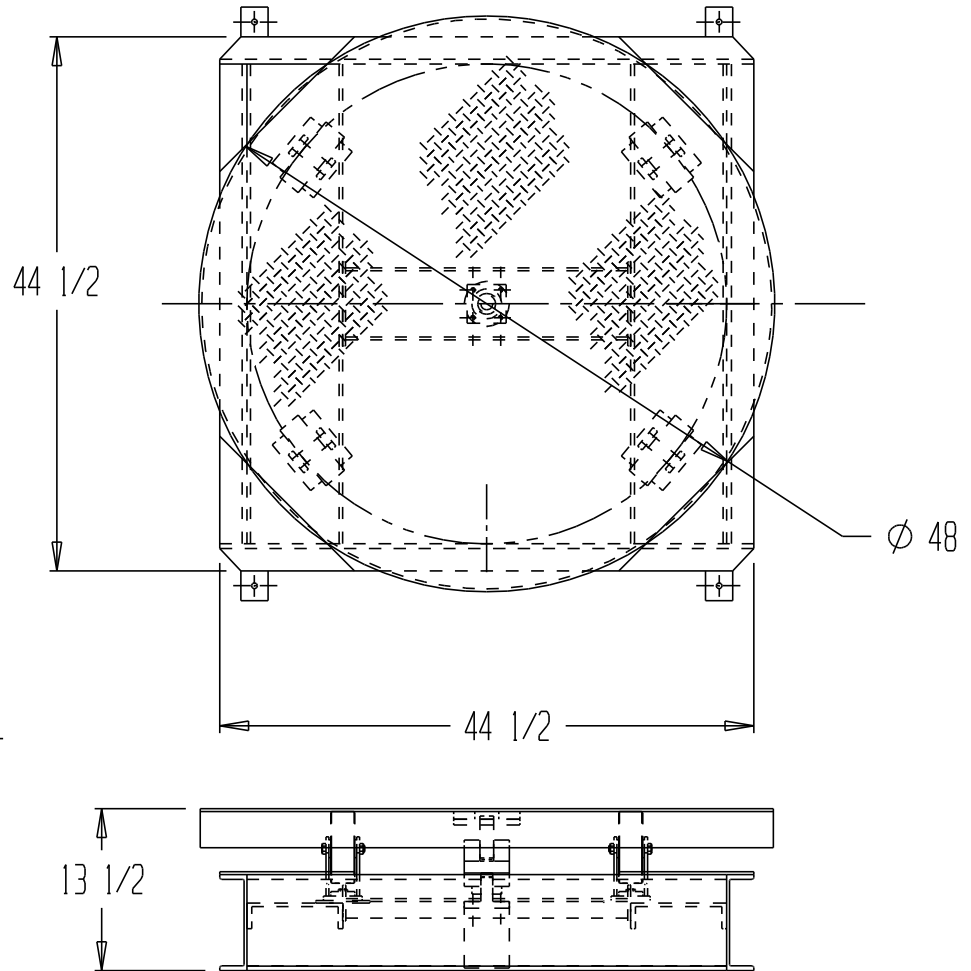


STAND ALONE HYDRAULIC POWERED CAROUSEL - STPC-EHD

STANDARD FEATURES

MODEL NUMBER: STPC-EHD
 CAPACITY: 4,000 LBS
 LEVEL HT: 13 1/2"
 TOP PLATE: Ø 48" TREAD PLATE
 (4) - 6" X 2" SEMI-STEEL CASTERS
 POWER: 115V AC INPUT
 INTERNAL MOTOR/PUMP HYDRAULIC UNIT
 APPROX 8 R.P.M.FIXED SPEED
 CLOCKWISE DIRECTION
 GUARDED FOOT CONTROL
 ***POWER UNIT IS NOT DESIGN FOR
 CONTINUOUS RUNNING



Deck tolerances +/- 1/2"
 Table height tolerances +/- 1/2"
 Deck Flatness ± 1/4"

SPECIAL FEATURES

NONE

A P P R O V A L	I, THE UNDERSIGNED, AGREE THAT THE PRODUCT AS REPRESENTED SATISFIES DESIGN & DIMENSION REQUIREMENTS. I ALSO ACKNOWLEDGE MY DUTY TO CONFIRM PRODUCT & INSTALLATION COMPLIANCE WITH ALL APPLICABLE FEDERAL, STATE AND LOCAL REGULATIONS & STANDARDS.	
	ALL SPECIAL UNITS ARE NON-RETURNABLE	
	[] As drawn [] As marked	
	Signed: _____	Date: _____
LEAD TIME WILL START UPON RECEIPT OF SIGNED APPROVAL DRAWING		

Any additions, deletions or omissions must be corrected on this drawing, as this drawing will be considered all inclusive.

All graphics provided are for reference only. If certain dimensions are critical please verify those dimensions with your salesperson

DISTRIBUTOR'S NAME: VESTIL MFG		P.O.#: _
DRAWN BY: _____		W.O.#: _
DATE: _	SCALE: _	SALES: _
REFERENCE: _	QUOTE # : _	DRWG./FILE NAME: _
QUOTED LEADTIME: _		