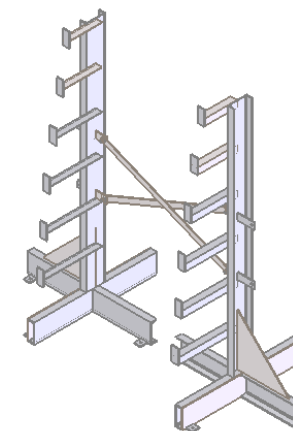
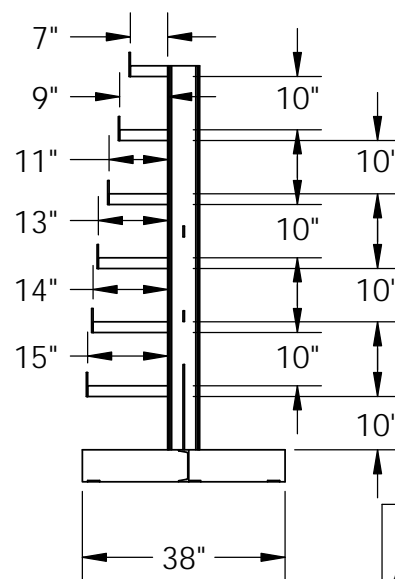
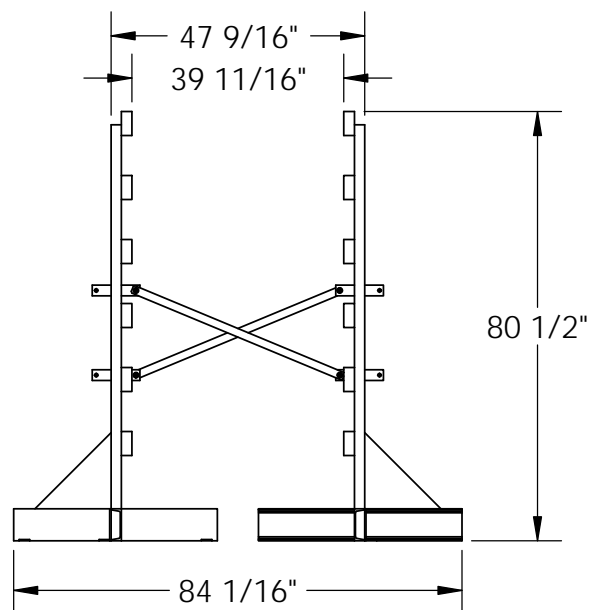
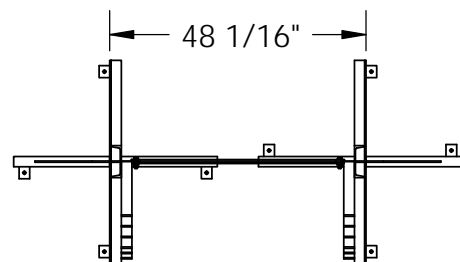


SINGLE SIDED BAR STOCK TREE - BAR-R-84-S

APPROX WEIGHT: 317.38 lbs.
DOES NOT INCLUDE WEIGHT OF POWER OR PACKAGING!!!

*** ANY ADDITIONS, DELETIONS, OR OMISSIONS MUST BE CORRECTED ON THIS DRAWING AS THIS DRAWING WILL BE CONSIDERED ALL INCLUSIVE ***

ALL GRAPHICS PROVIDED ARE FOR REFERENCE ONLY. IF CERTAIN DIMENSIONS ARE CRITICAL PLEASE VERIFY THOSE DIMENSIONS WITH YOUR SALESPERSON



DIMENSION TOLERANCE $\pm 1/4"$

**A
P
P
R
O
V
A
L**

I, THE UNDERSIGNED, AGREE THAT THE PRODUCT AS REPRESENTED SATISFIES DESIGN AND DIMENSION REQUIREMENTS. I ALSO ACKNOWLEDGE MY DUTY TO CONFIRM PRODUCT AND INSTALLATION COMPLIANCE WITH ALL APPLICABLE FEDERAL, STATE AND LOCAL REGULATIONS AND STANDARDS.
ALL SPECIAL UNITS ARE NON-RETURNABLE
[] As drawn [] As marked

Signed: _____ Date: _____

LEAD TIME WILL START UPON RECEIPT OF SIGNED APPROVAL DRAWING

FOR INTERNAL USE ONLY PROJECT SIGN OFF	
SALES	
ENG.	
FAB.	
POWER	

DISTRIBUTOR'S NAME:		P.O.#
VESTIL MANUFACTURING		X
DRAWN BY: JDB		W.O.#
DATE: 6/11/2009		X
REFERENCE: X		SALES: X
QUOTED LEAD TIME: X		SCALE: 1:36
QUOTE # X		FILE NAME:
		31-007-098

STANDARD FEATURES

MODEL NUMBER IS BAR-R-84-S
OVERALL WIDTH IS 38
OVERALL LENGTH IS 84 1/16
OVERALL HEIGHT IS 80 1/2
MAX CAPACITY IS 500 LBS. PER ARM
STORAGE BAYS: 6
BAR STOCK CAN BE STORED ON ONE SIDE
UNIT SUPPLIED WITH LAG DOWN BRACKETS
UNIT COMES WITH 2 UPRIGHTS
AND 1 SET OF CROSS-BRACING

SPECIAL FEATURES

NONE