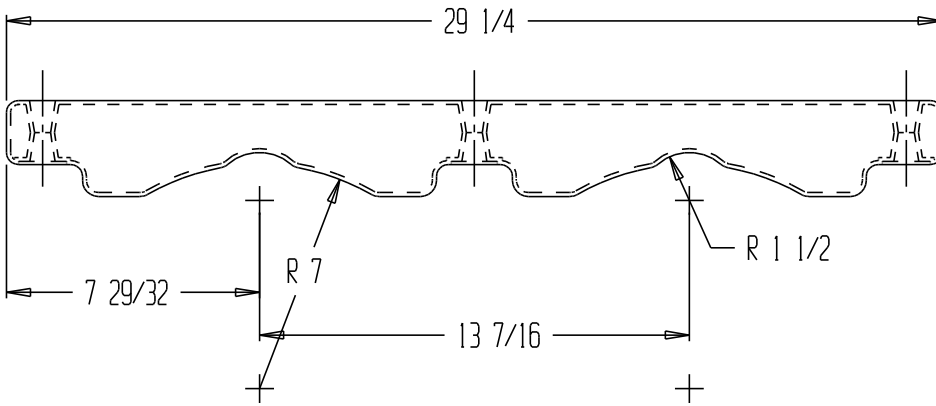
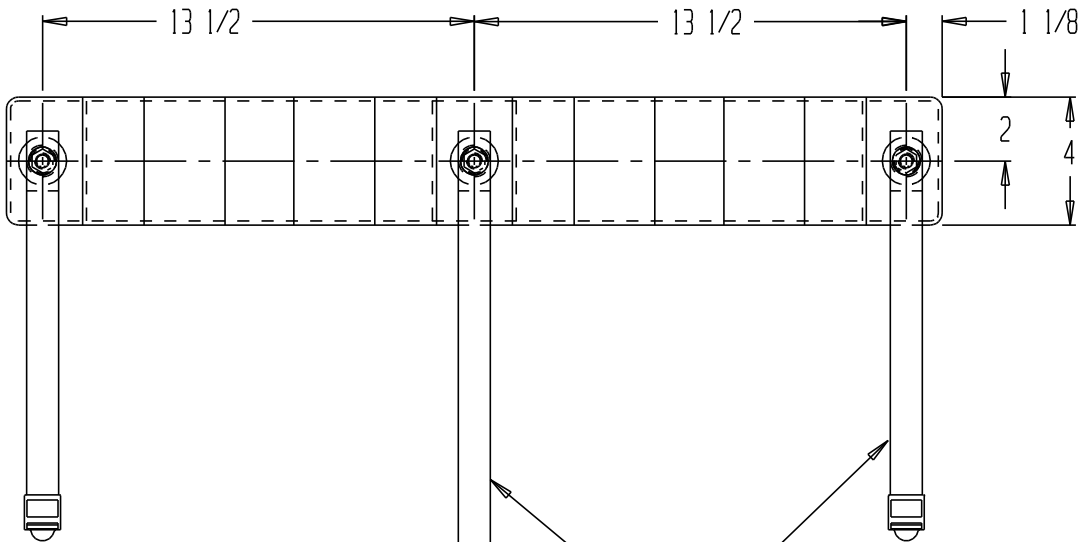


GAS CYLINDER POLY BUMPER, CB-W-2P



MOUNTING HARDWARE NOT INCLUDED

NOTE: STRAPS & HARDWARE NOT SHOWN IN TOP VIEW.



BOLTS SHOWN FOR CLARITY

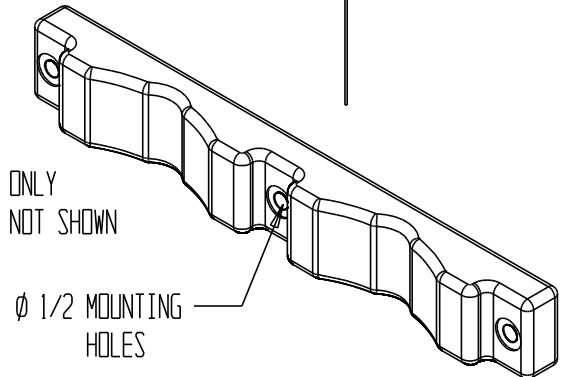
HARDWARE NOT INCLUDED

STANDARD FEATURES

MODEL NUMBER: CB-W-2P
CAPACITY: 2 CYLINDER
OVERALL WIDTH: 29 1/4"
OVERALL DEPTH: 3"
OVERALL HEIGHT (WITHOUT STRAP): 4"
MOUNTING HOLE DIA.: 1/2"

NYLON SECURITY STRAPS

3-D FOR REFERENCE ONLY
STRAPS & HARDWARE NOT SHOWN
SCALE 1:8



Ø 1/2 MOUNTING HOLES

SPECIAL FEATURES

NONE

APPROVAL

I, the undersigned, hereby approve this print

[] As drawn [] As marked

This includes my approval of design & dimensions.

Signed: _____

Date: _____

**SPECIAL UNITS ARE NON-RETURNABLE
*AVAILABLE AT ADDITIONAL COSTS

LEAD TIME WILL START UPON
RECEIPT OF SIGNED APPROVAL
DRAWING

DISTRIBUTOR'S NAME:		P.O.#: _
VESTIL MANUFACTURING		W.O.#: _
DRAWN BY: SR	DATE: 6-9-05	SALES: -
REFERENCE:		DRWG./FILE NAME:
-		CB-W-2P

SCALE: 1:6