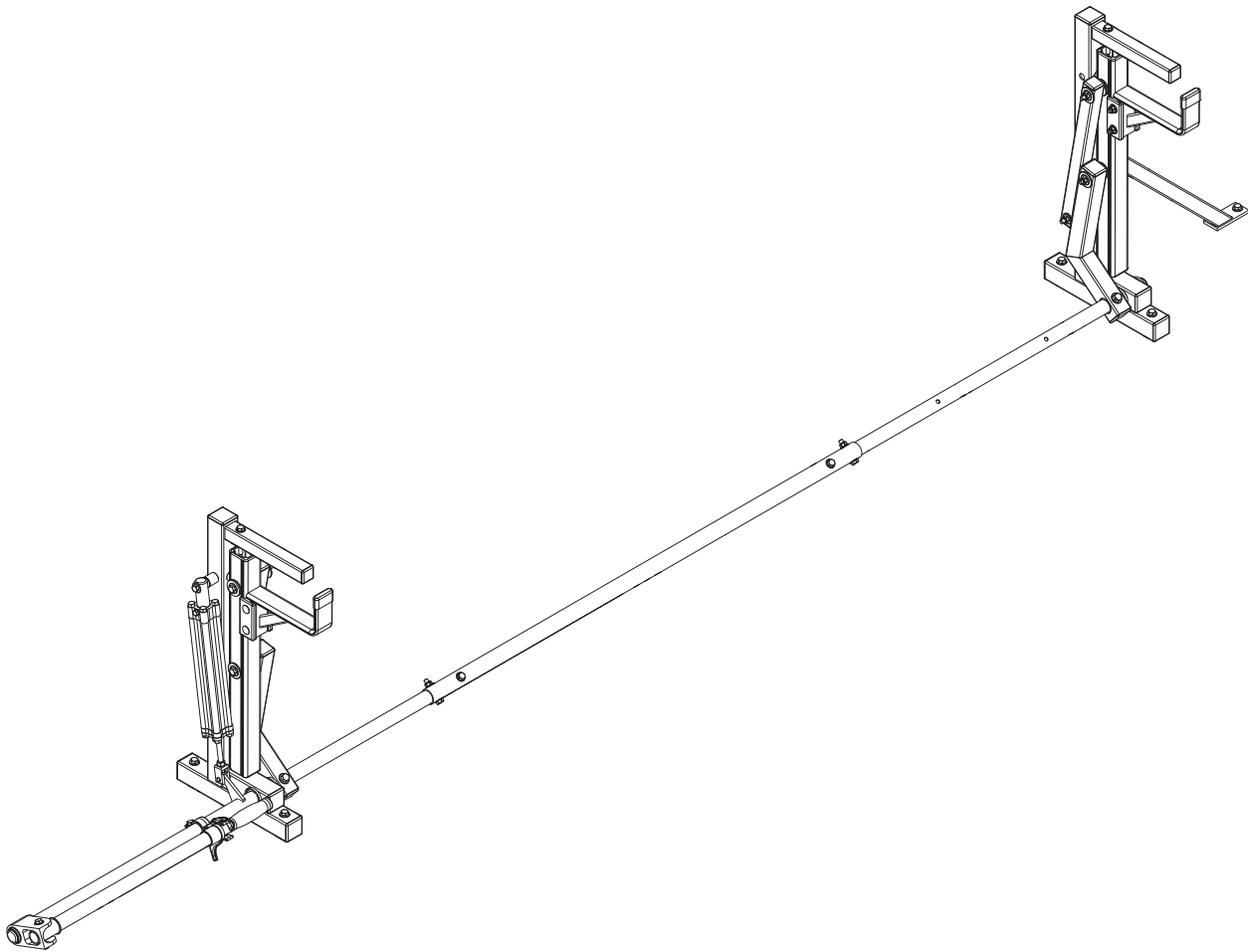
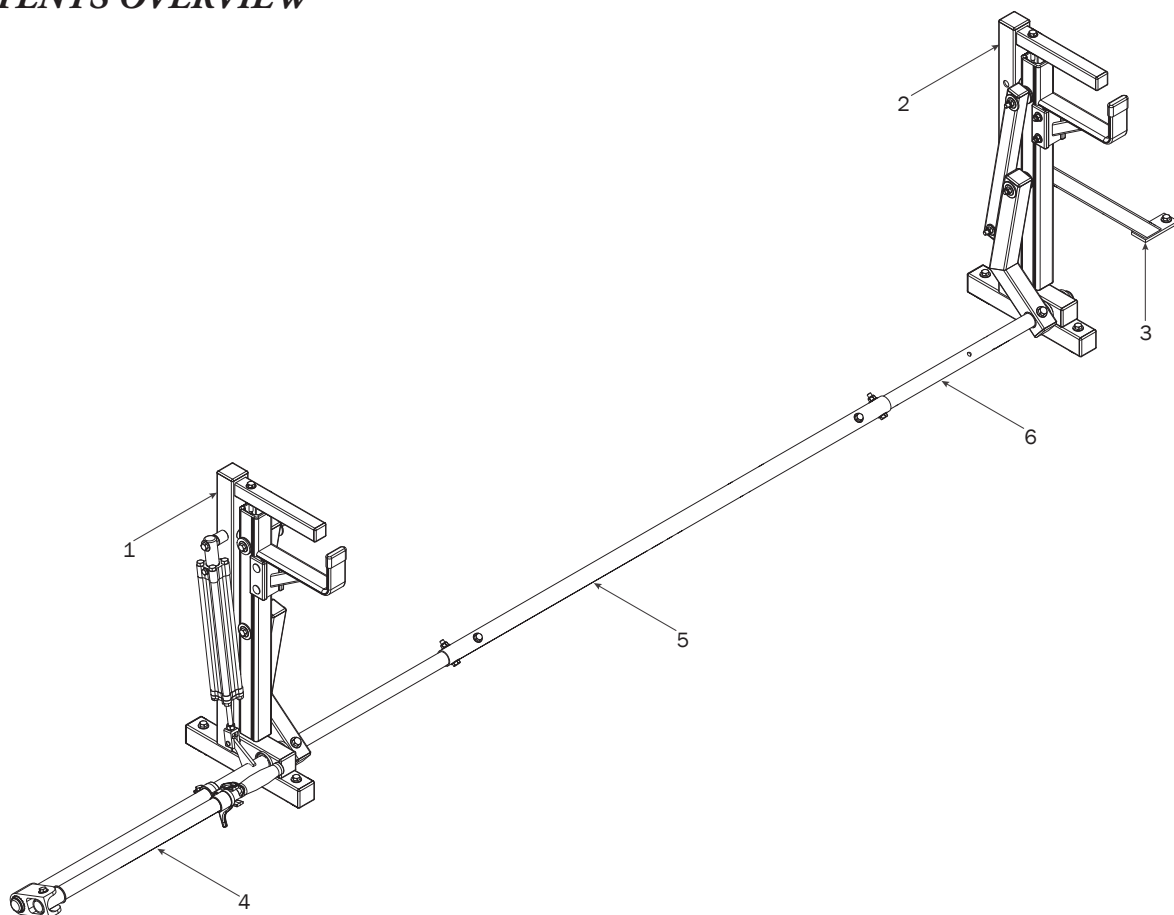


PRIME DESIGN™

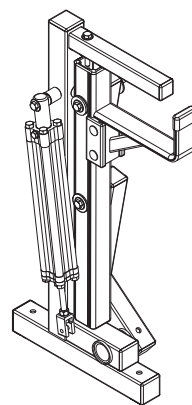
A Safe Fleet Brand



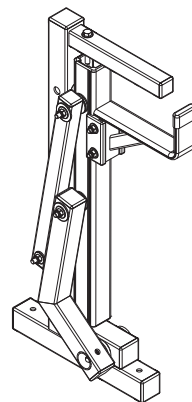
2017
UXV



1—Rear Rotation Assembly..... (Qty 1)



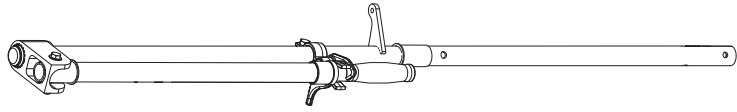
2—Front Rotation Assembly..... (Qty 1)



3—Mount Brace..... (Qty 1)
20.00"



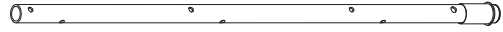
4—Rear Drive Shaft..... (Qty 1)
Right Hand, 50.00"



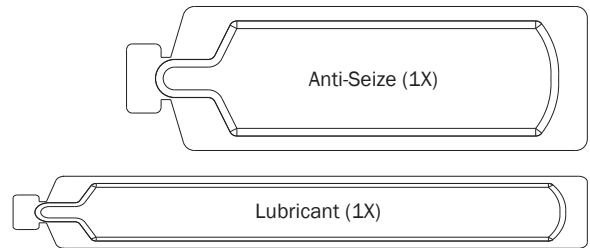
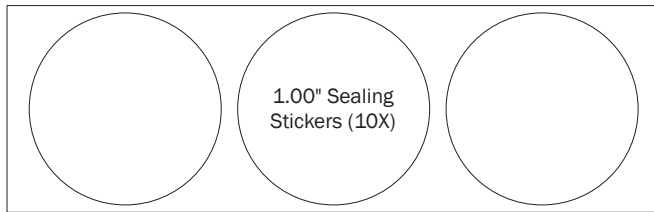
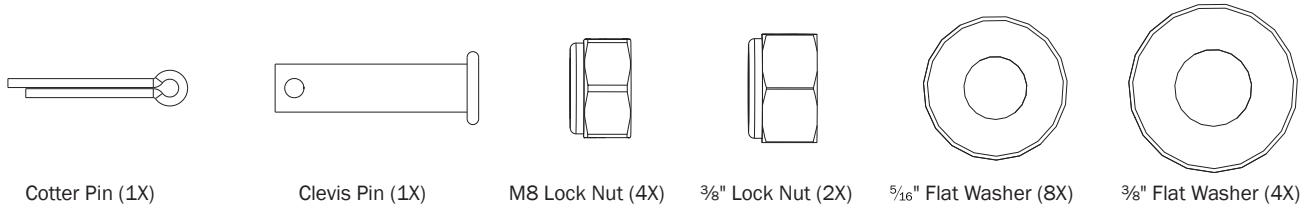
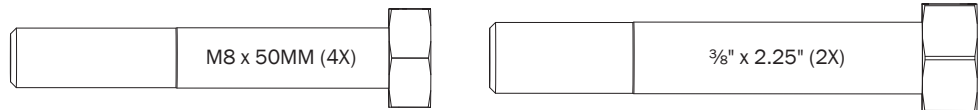
5—Connecting Bar..... (Qty 1)
48.00"



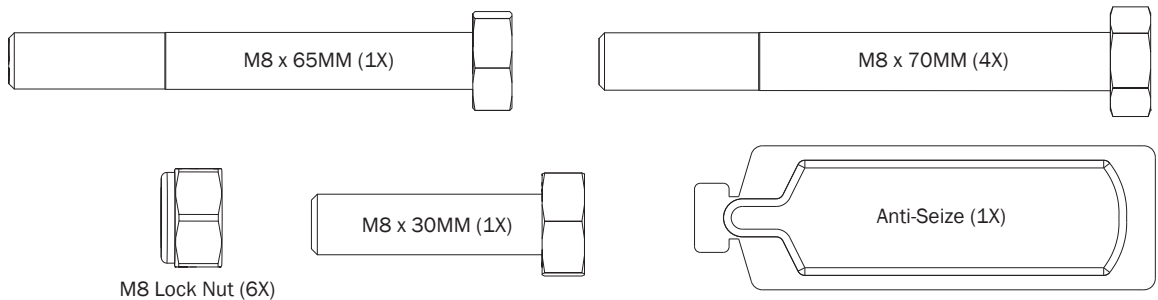
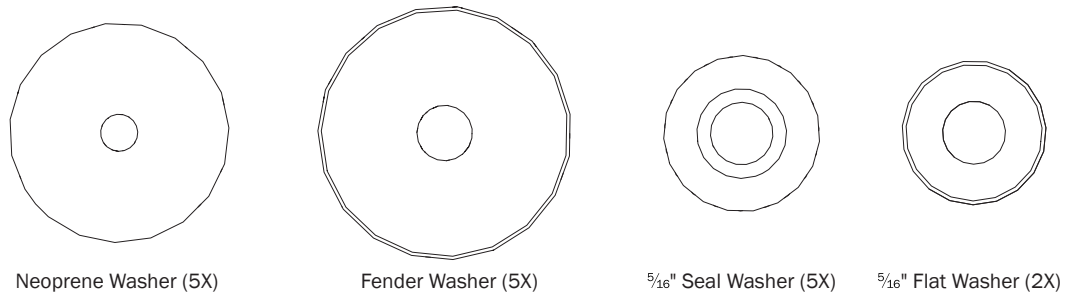
6—Front Drive Shaft..... (Qty 1)
B Version, 35.75"



HKT-8162-Rotation Hardware Kit



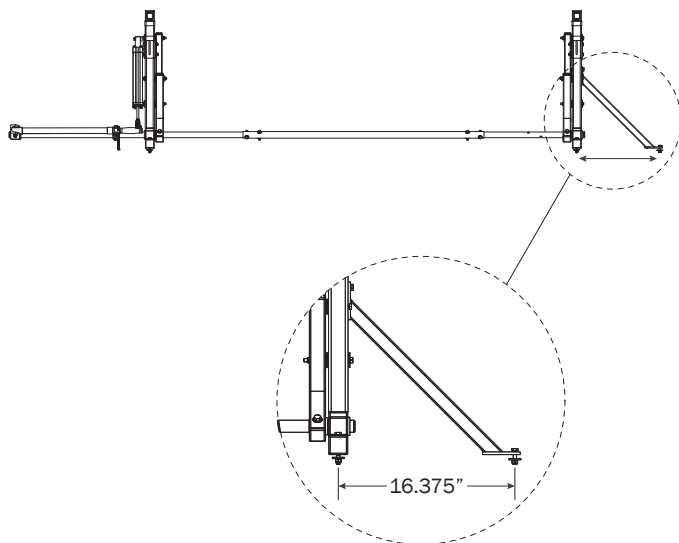
HKT-0055-Rotation Hardware Kit



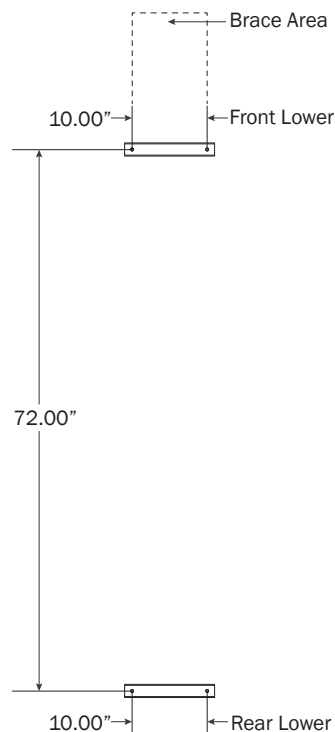
MOUNTING DIMENSIONS

Mounting to Service Body: dimensions are dependent upon Crossbar distances of 6'-8' plus allowance for the Mount Brace from the front of the Utility Rack.

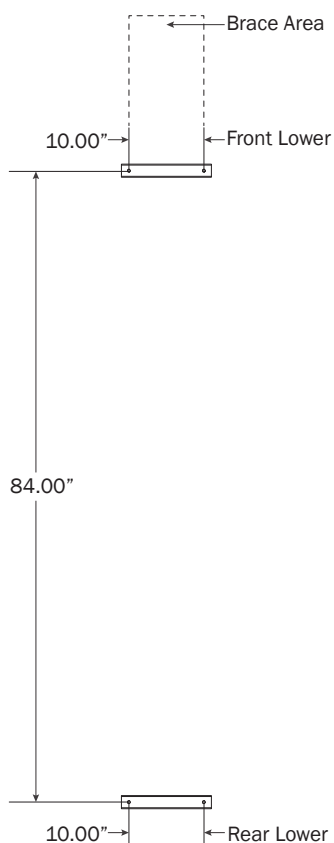
Allow spacing for the Mount Brace, but do not drill or install until Step 9.



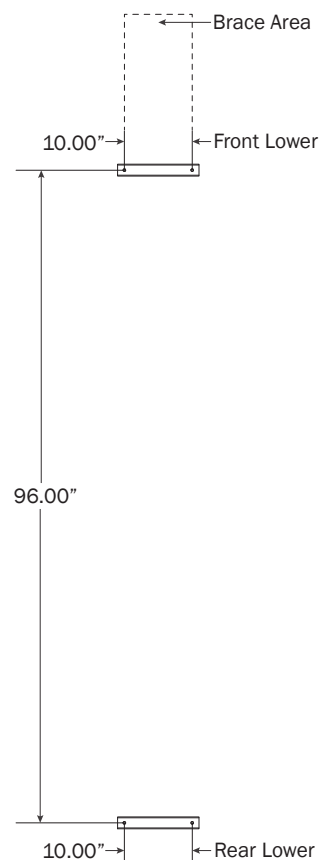
- 0.1** 6.00 Ft: Drill holes into the Service Body mounting location according to dimensions shown.



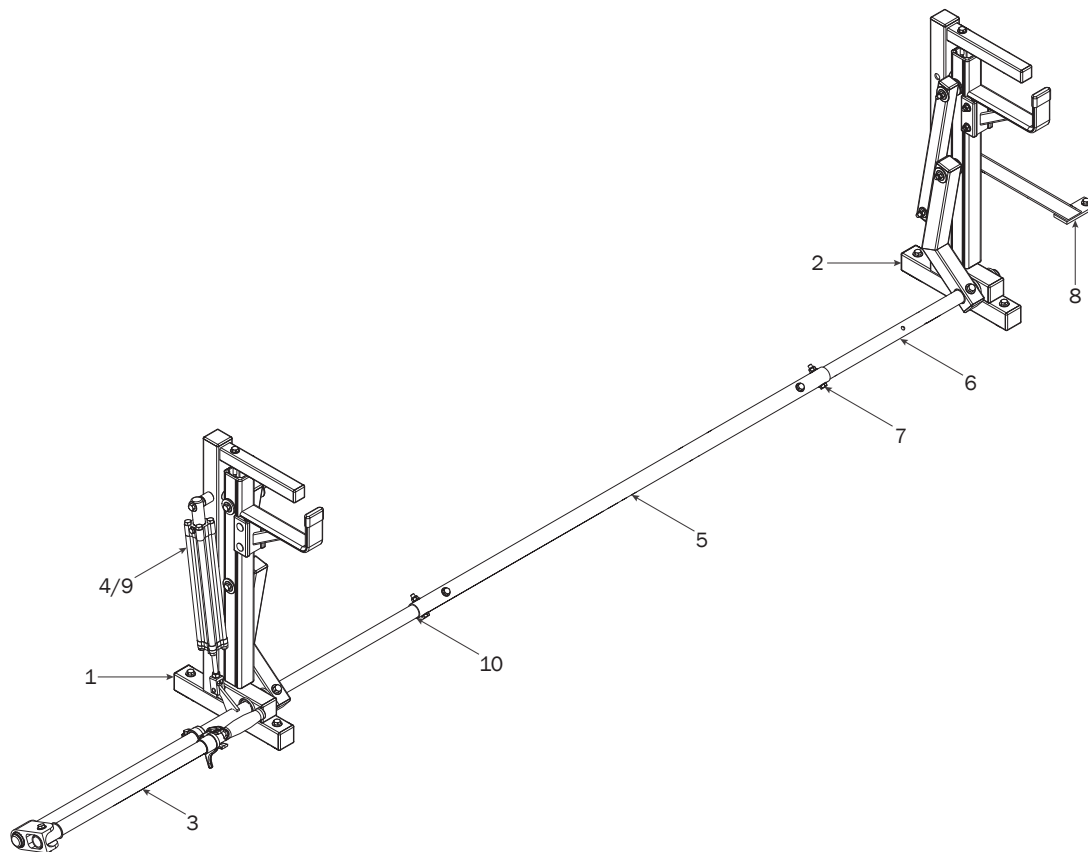
- 0.2** 7.00 Ft: Drill holes into the Service Body mounting location according to dimensions shown.



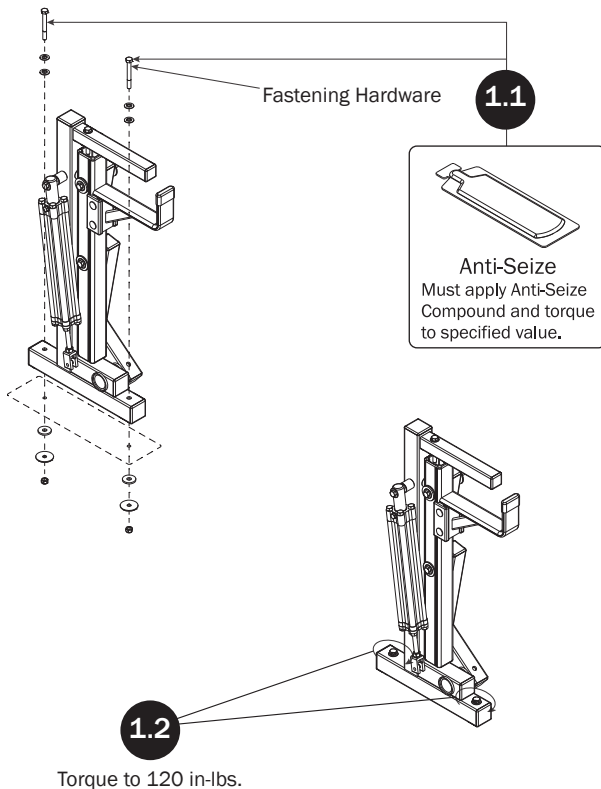
- 0.3** 8.00 Ft: Drill holes into the Service Body mounting location according to dimensions shown.



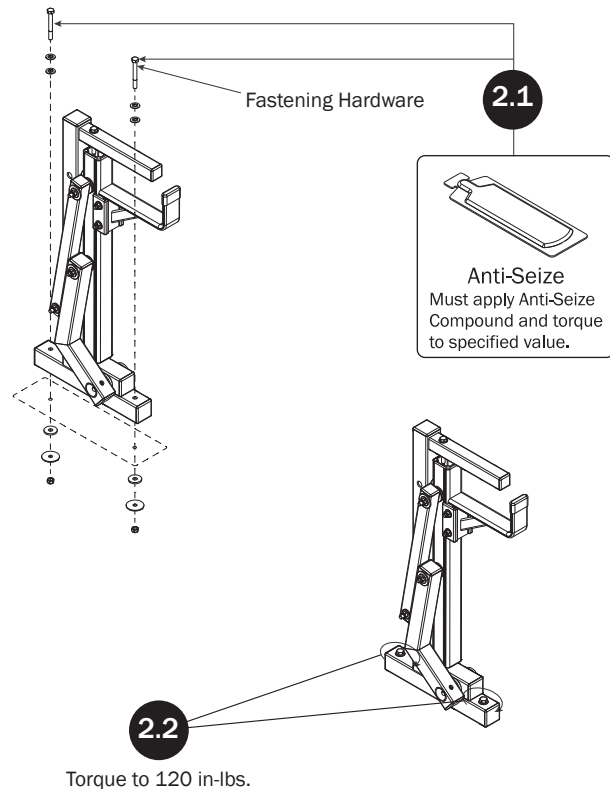
RIGHT ROTATION ASSEMBLY SEQUENCE

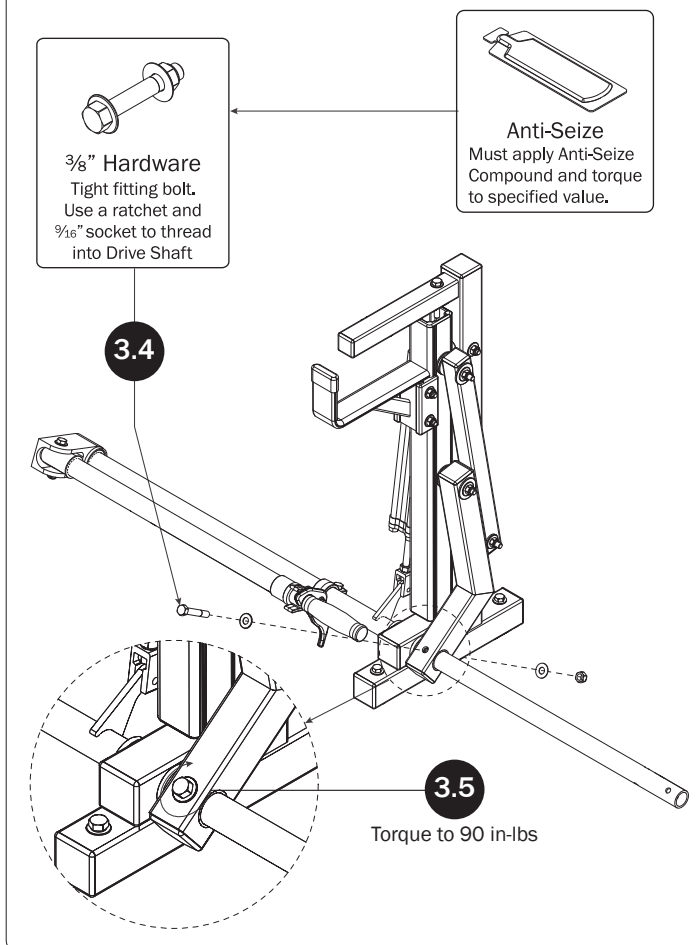
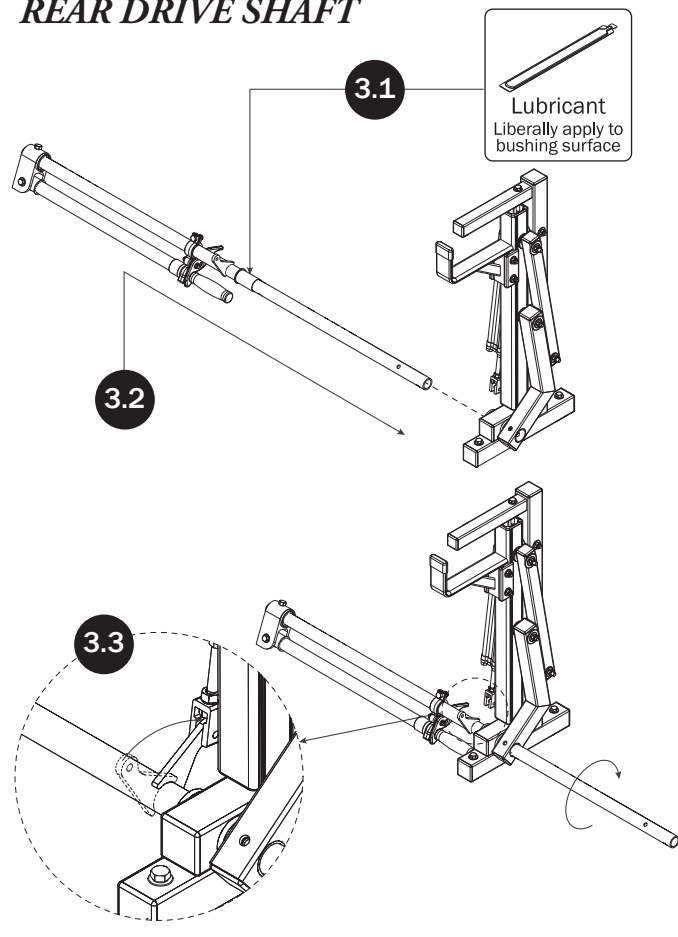
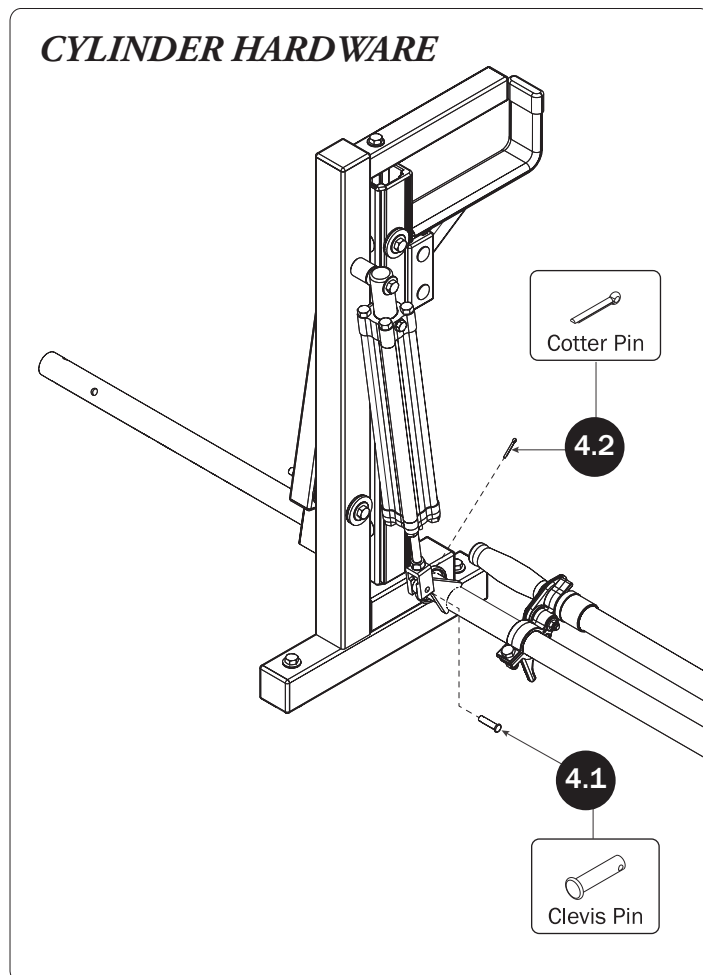
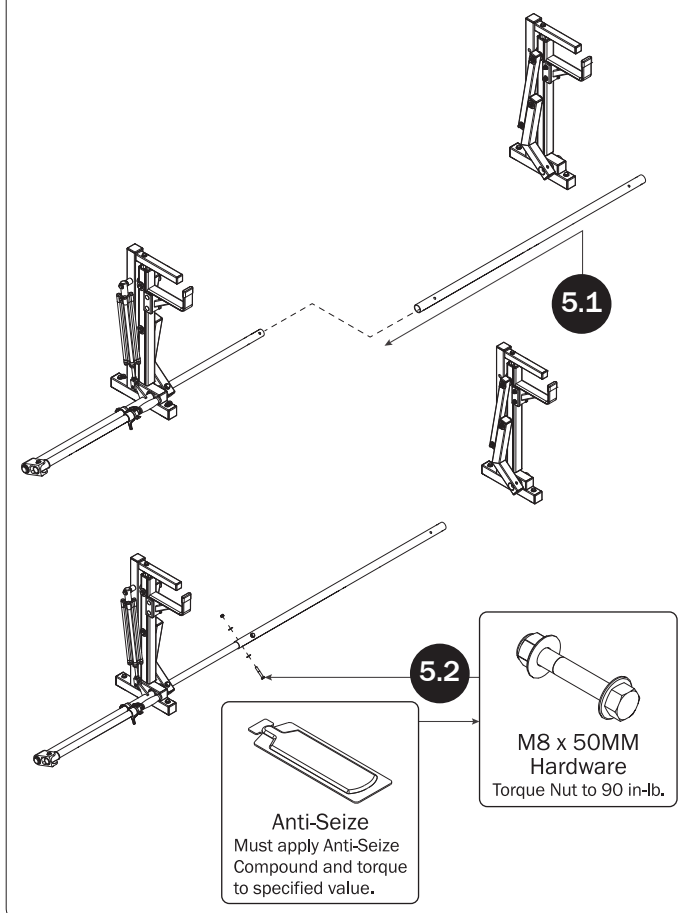


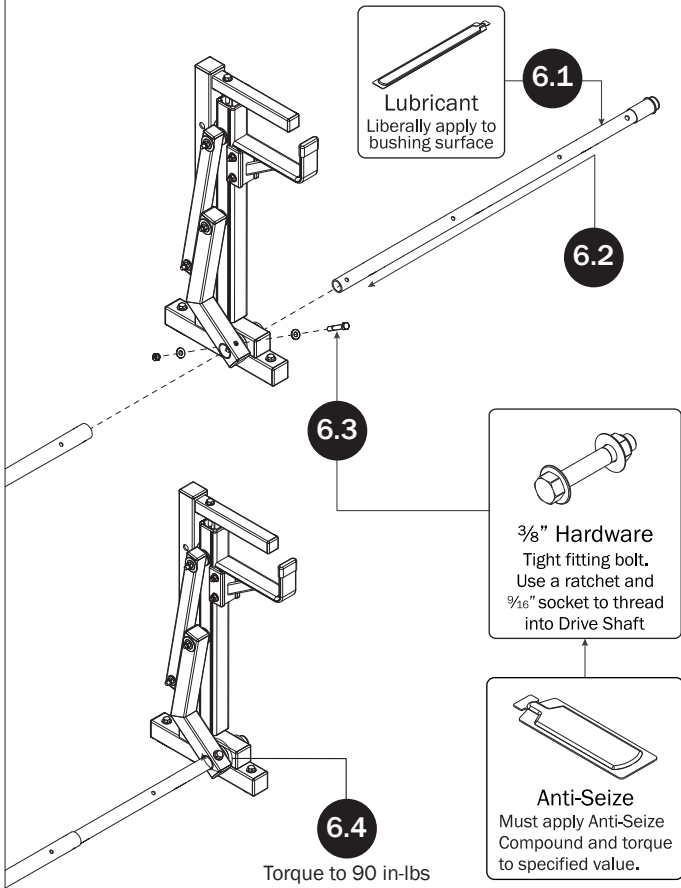
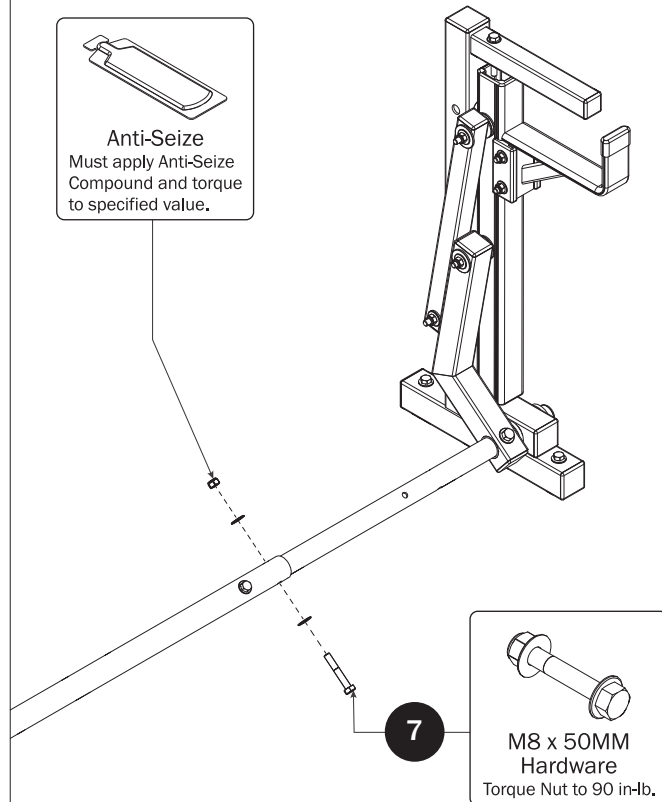
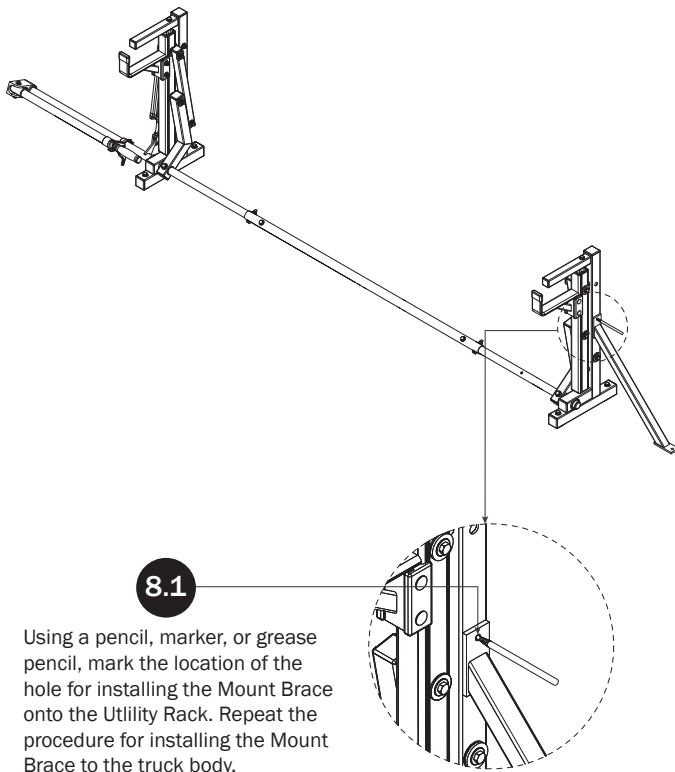
REAR ROTATION ASSEMBLY



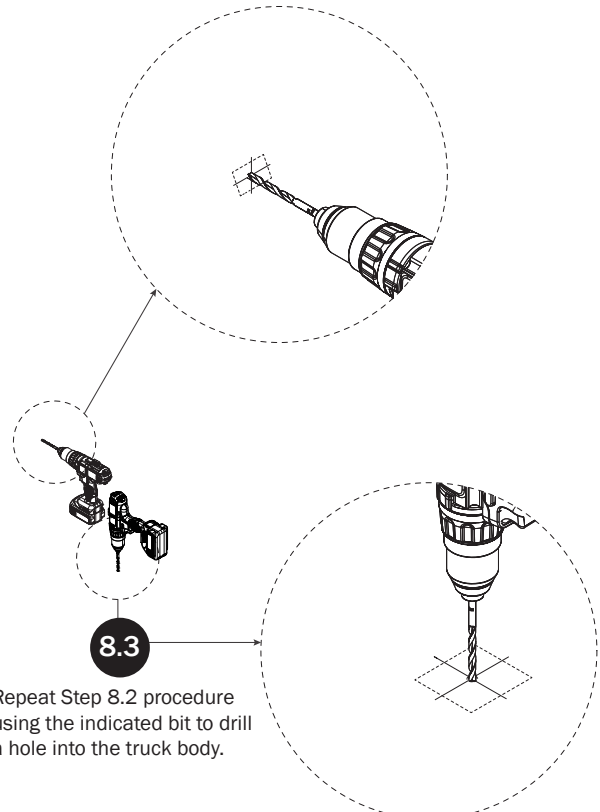
FRONT ROTATION ASSEMBLY

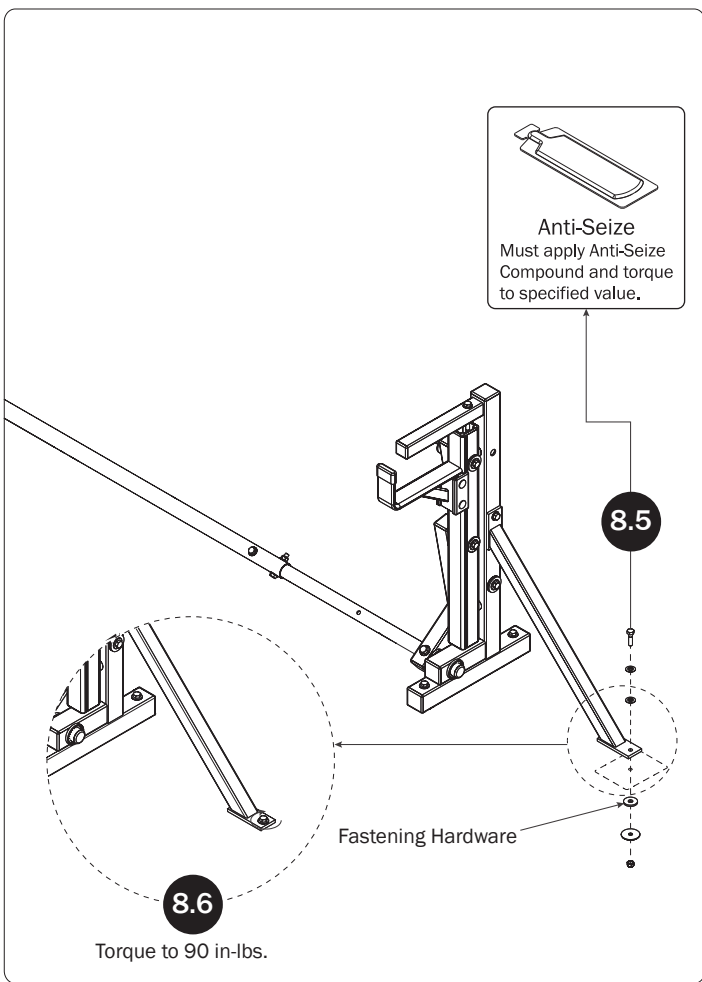
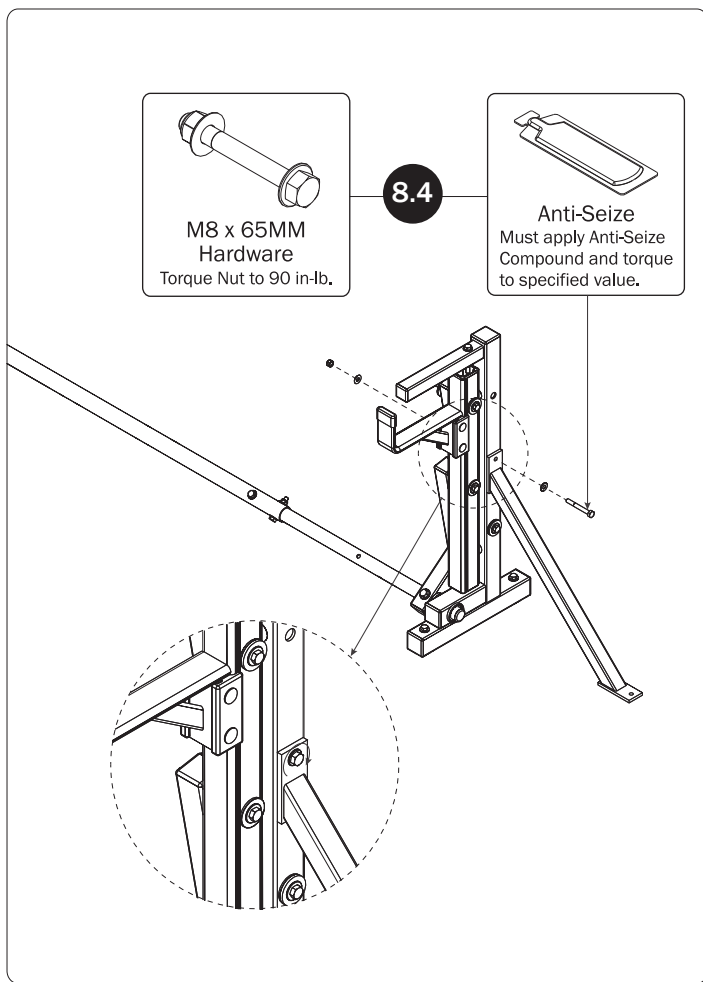


REAR DRIVE SHAFT**CYLINDER HARDWARE****CONNECTING BAR**

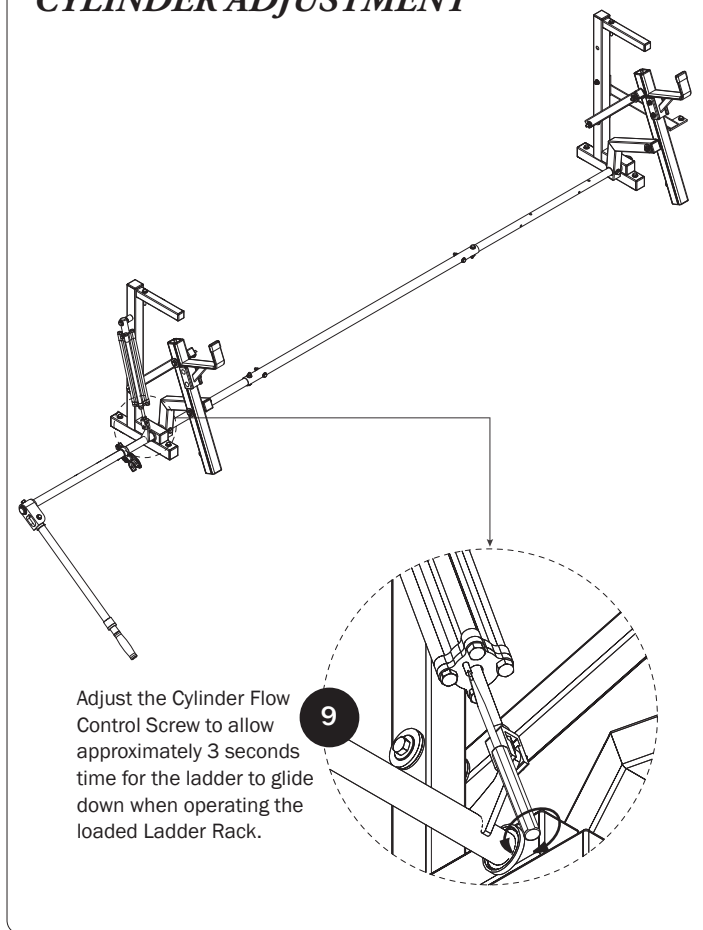
FRONT DRIVE SHAFT**CONNECTING BAR FASTENERS****MOUNT BRACE INSTALLATION**

- 8.2** Remove the Mount Brace to expose the bolt hole markings. Using a 9MM, 23/64", or T size bit, drill a hole into the Utility Rack at the marked bolt hole location created during Step 8.1.





CYLINDER ADJUSTMENT



DRIVE SHAFT SEALING

