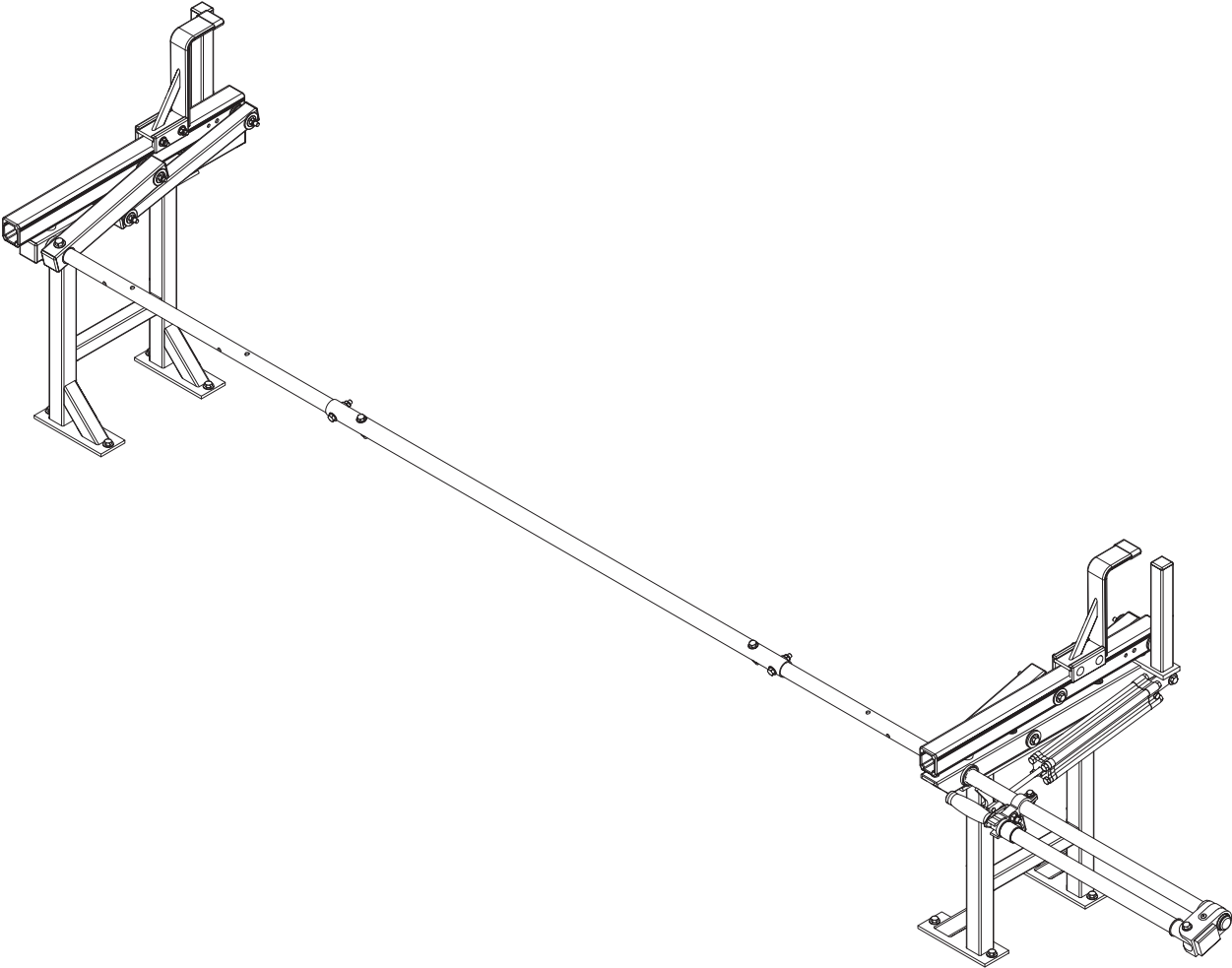


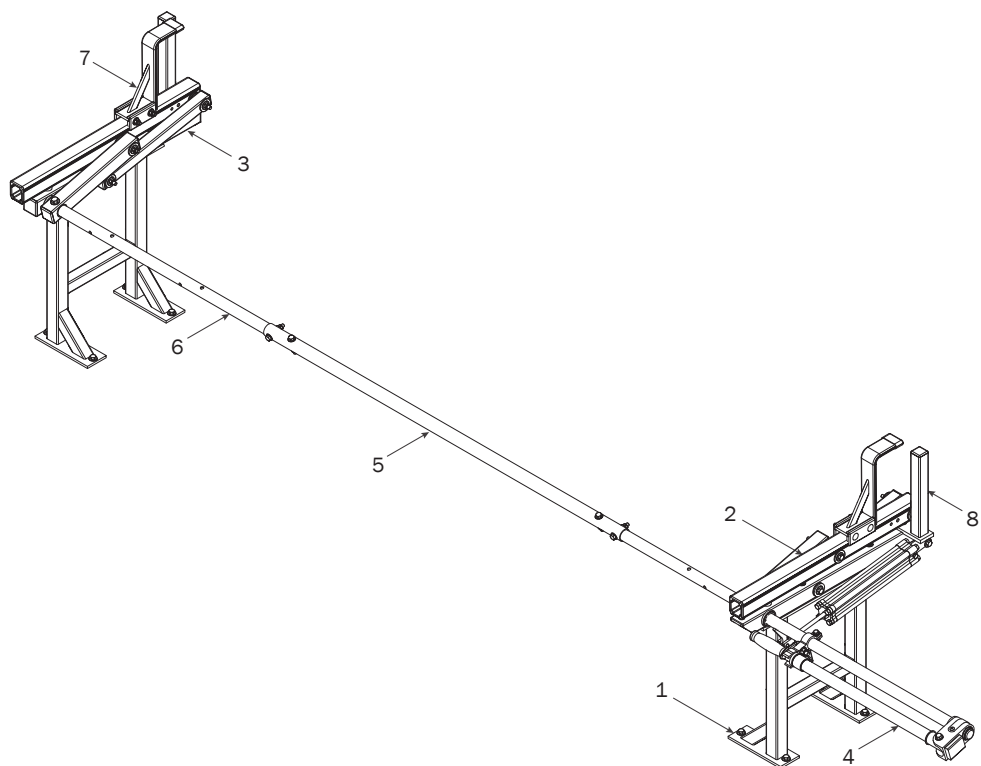
PRIME DESIGN™

A Safe Fleet Brand

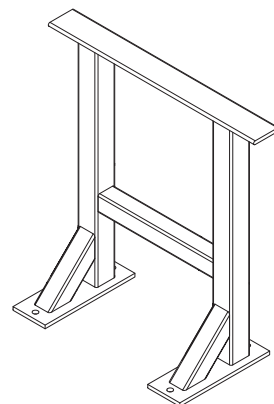


PRX **0018**

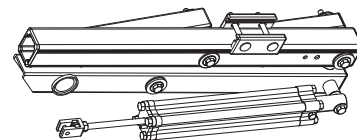
CONTENTS OVERVIEW



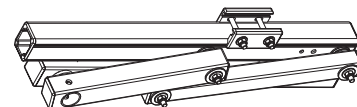
1—Utility Base Standing Mount..... (Qty 2)



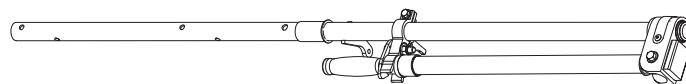
2—Rear Rotation Assembly..... (Qty 1)



3—Front Rotation Assembly..... (Qty 1)



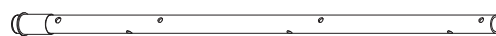
4—Rear Drive Shaft..... (Qty 1)
Left Hand, B4 Version, 50.00"



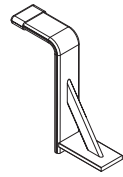
5—Connecting Bar..... (Qty 1)
48.00"



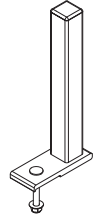
6—Front Drive Shaft..... (Qty 1)
B Version, 35.75"



7—Z Post (Qty 2)
Adjustable, 7.25"



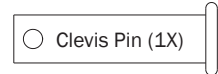
8—L Post (Qty 2)
9.25"



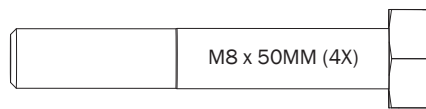
HKT-8162-Rotation Hardware Kit



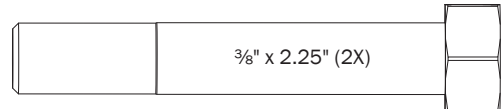
Cotter Pin (1X)



Clevis Pin (1X)



M8 x 50MM (4X)



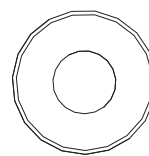
$\frac{3}{8}$ " x 2.25" (2X)



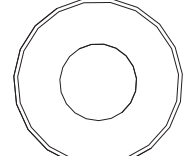
M8 Lock Nut (4X)



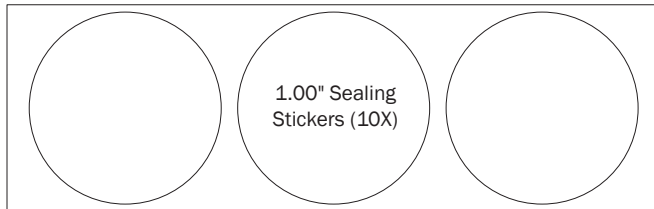
$\frac{3}{8}$ " Lock Nut (2X)



$\frac{5}{16}$ " Flat Washer (8X)



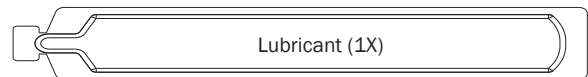
$\frac{3}{8}$ " Flat Washer (4X)



1.00" Sealing
Stickers (10X)

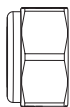


Anti-Seize (1X)

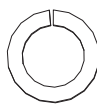


Lubricant (1X)

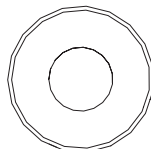
HKT-0122 Mounting Hardware Kit



Lock Nut (12X)



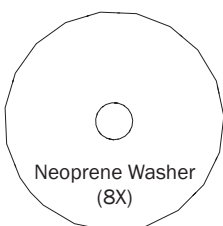
Lock Washer (4X)



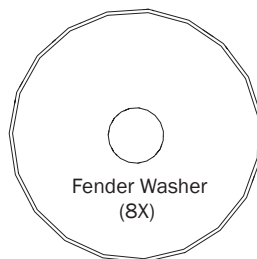
Flat Washer (8X)



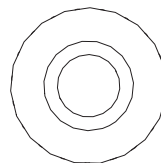
M8 x 70MM (4X)



Neoprene Washer
(8X)



Fender Washer
(8X)



Sealing Washer (8X)



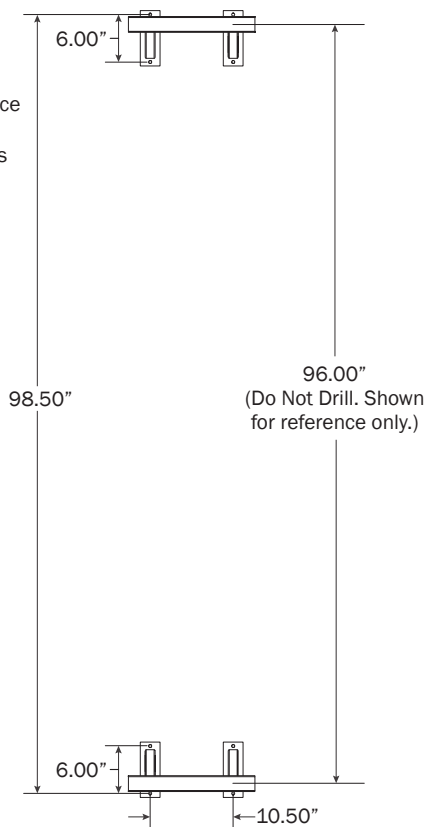
M8 x 35MM (8X)



Anti-Seize (1X)

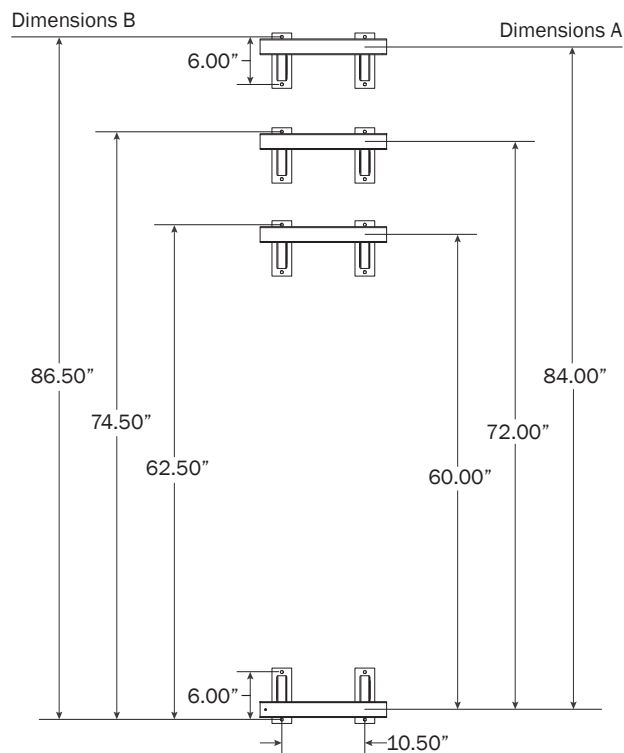
UTB-2316 MOUNTING BRACKETS
BRACKET PRE-ASSEMBLY**0.1**

Drill holes into the service body mounting location according to dimensions shown for 8.00 ft rack configuration.

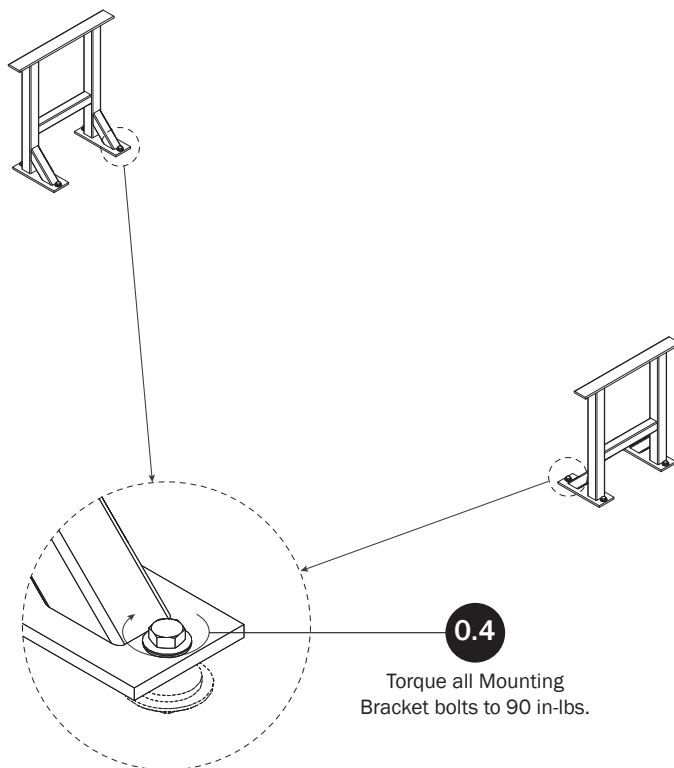
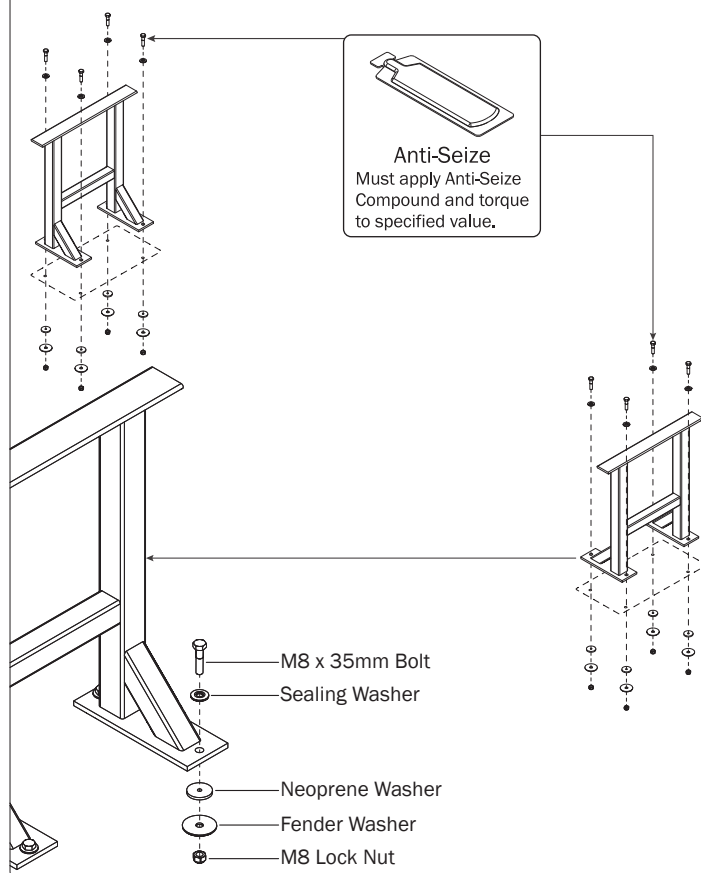
**0.2**

Dimensions shown below are for 5' (60.00"), 6' (72.00"), and 7' (84.00") spacing.

Dimensions A are measured from center to center of top mounting rail. Dimensions B are measured from outside bracket hole to outside bracket hole.

**0.3**

Apply Anti-Seize compound to Mounting Bracket bolts. The shorter bolt assemblies are on the outside as shown.

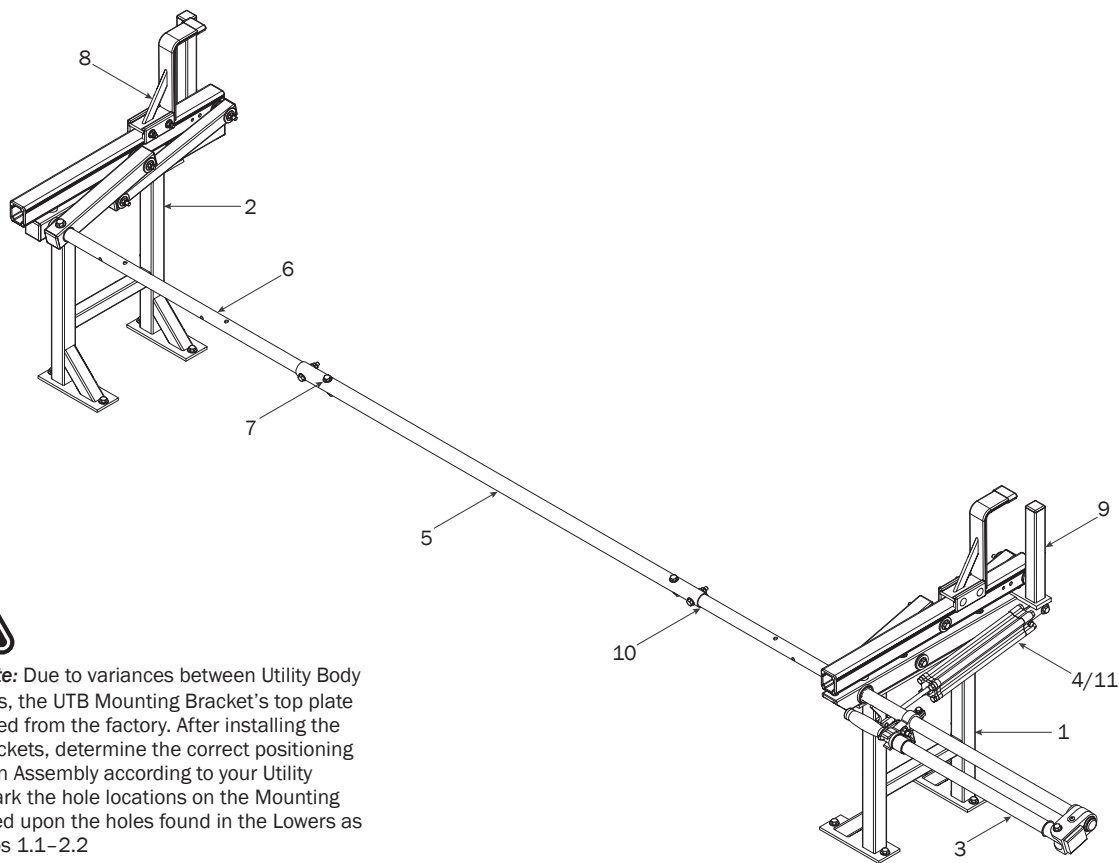
**0.4**

Torque all Mounting Bracket bolts to 90 in-lbs.

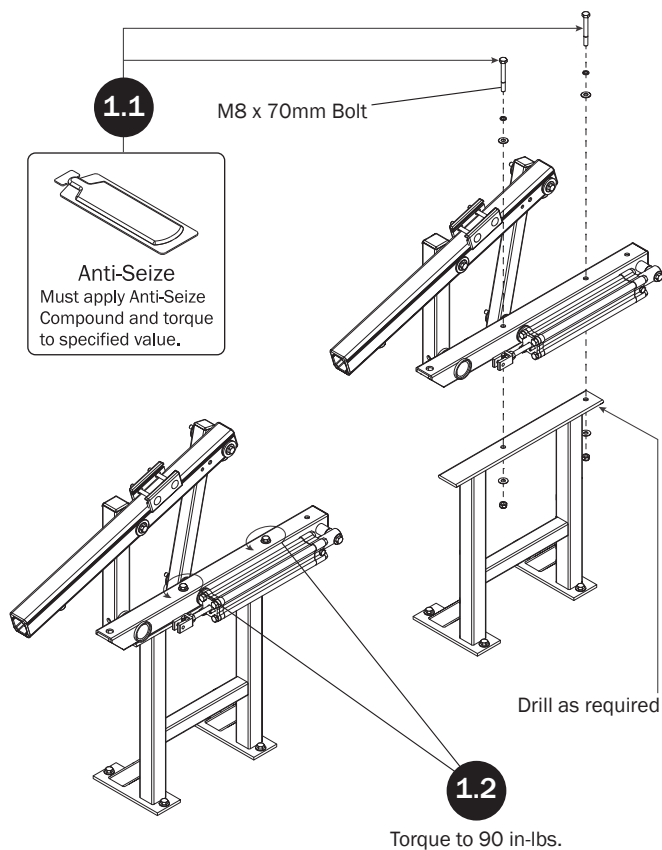
LEFT ROTATION ASSEMBLY SEQUENCE



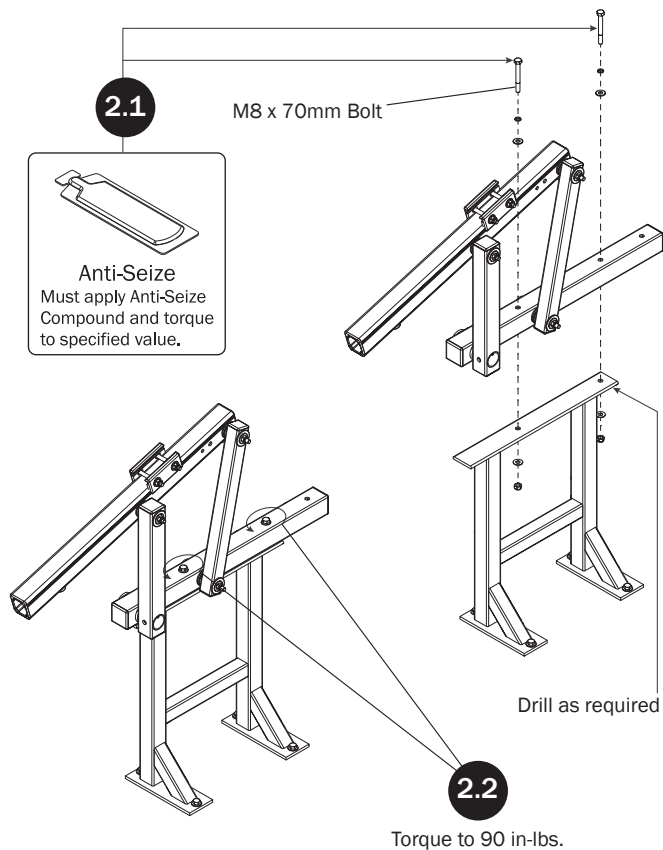
Installer's Note: Due to variances between Utility Body manufacturers, the UTB Mounting Bracket's top plate comes undrilled from the factory. After installing the Mounting Brackets, determine the correct positioning of the Rotation Assembly according to your Utility Body, then mark the hole locations on the Mounting Brackets based upon the holes found in the Lowers as shown in Steps 1.1–2.2

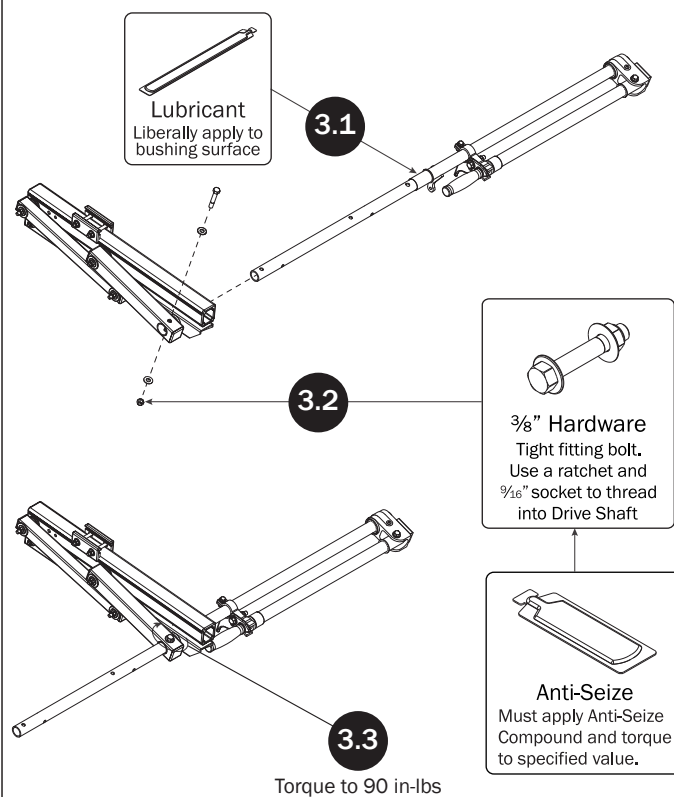
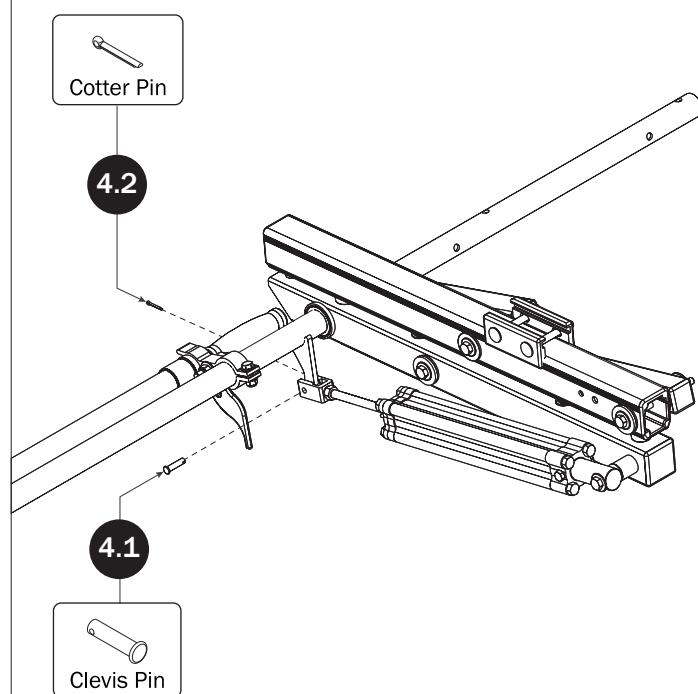
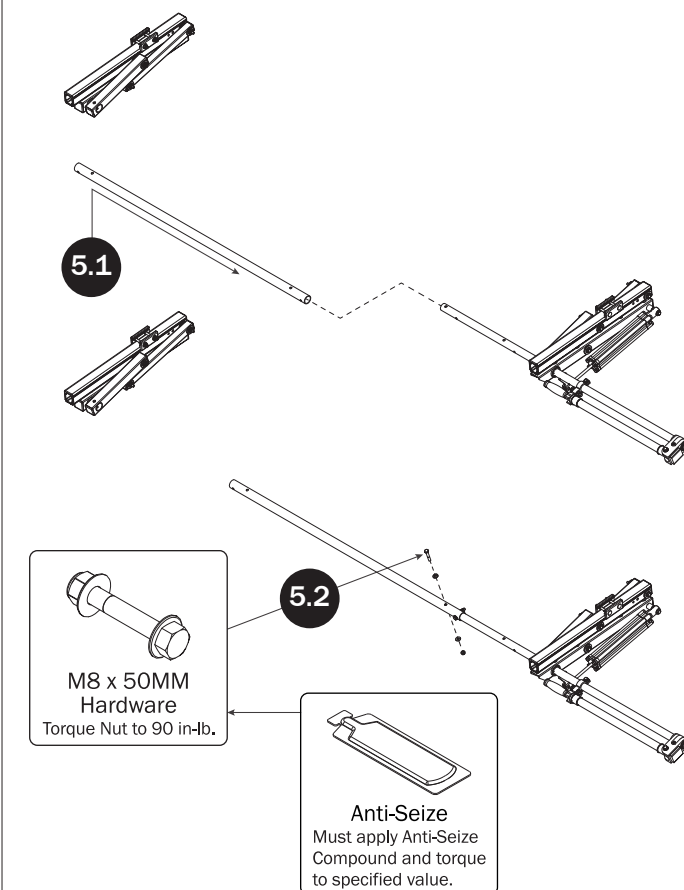
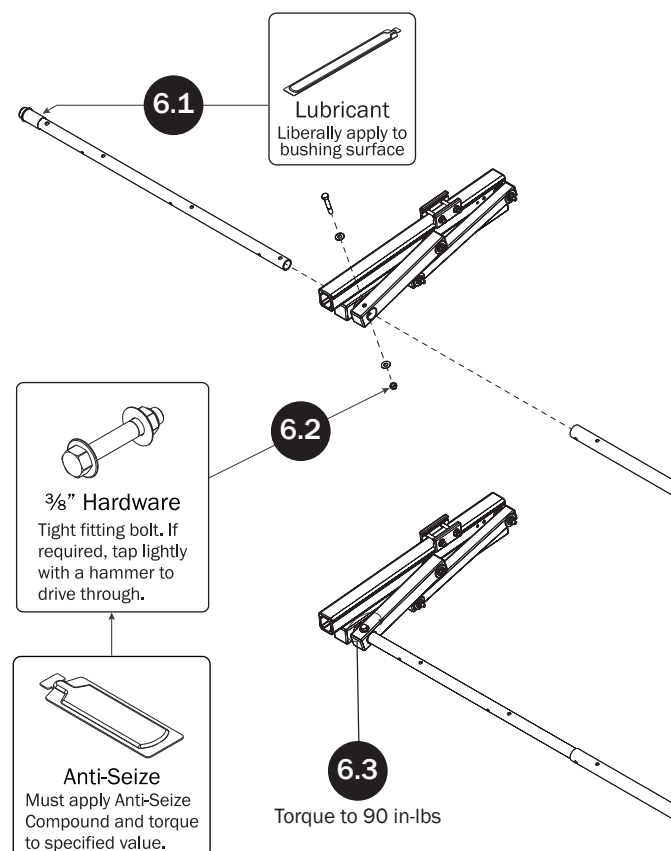


REAR ROTATION ASSEMBLY

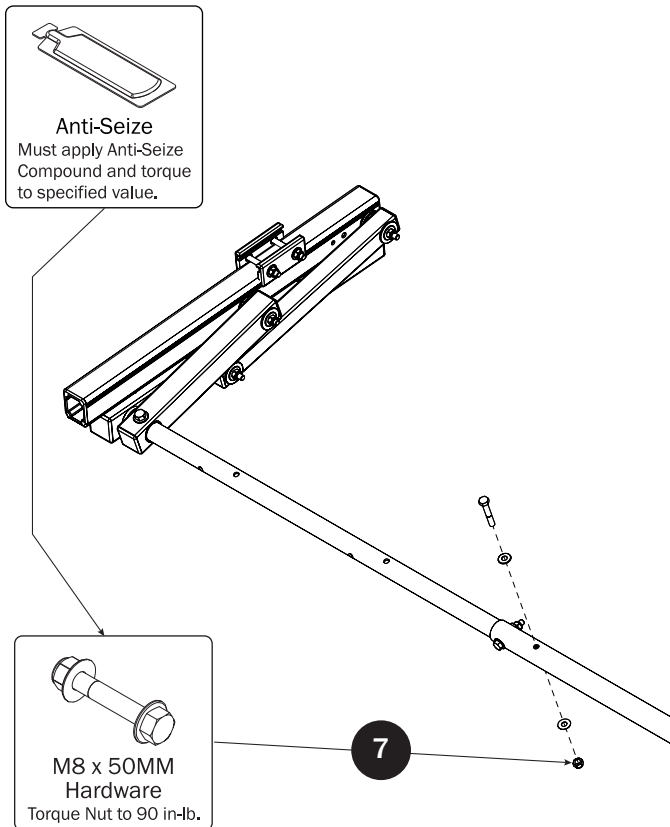


FRONT ROTATION ASSEMBLY

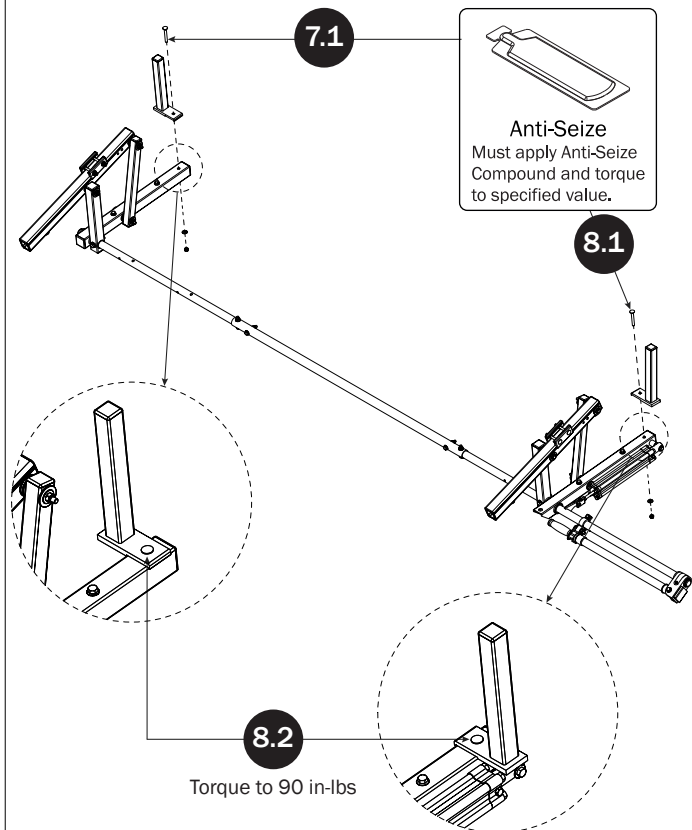


REAR DRIVE SHAFT**CYLINDER HARDWARE****CONNECTING BAR****FRONT DRIVE SHAFT**

CONNECTING BAR FASTENERS

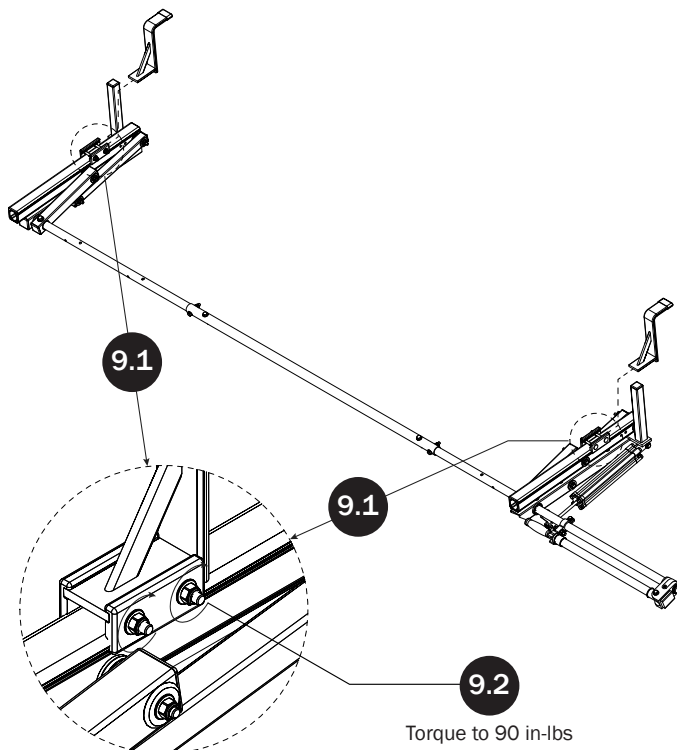


L POSTS

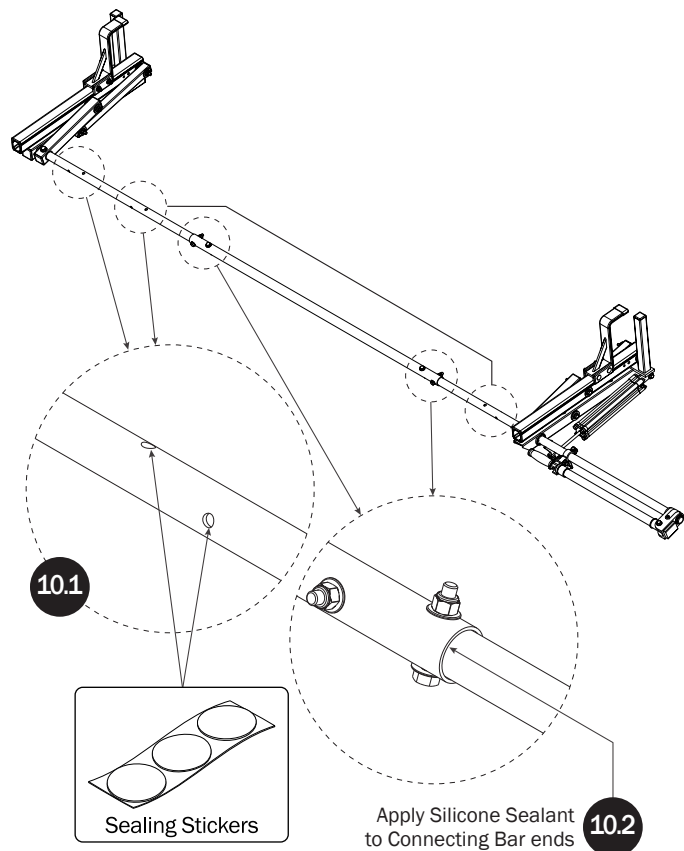


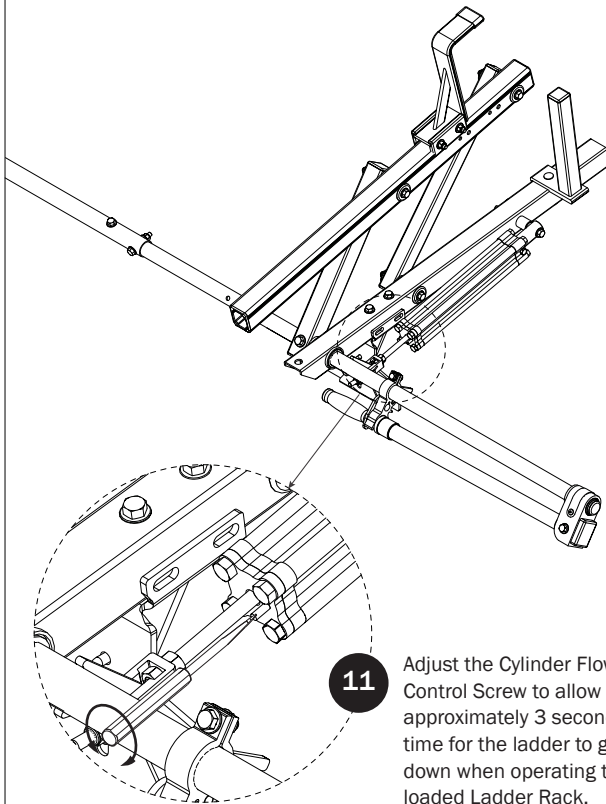
Z POSTS

SEE QUICK START GUIDE FOR ADJUSTMENTS



DRIVE SHAFT SEALING

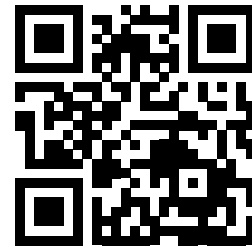


CYLINDER ADJUSTMENT**ADDITIONAL INFORMATION**

For additional information regarding your URX-001-E Ladder Rack, please visit the Prime Design website at: www.primedesign.net.

Using a QR code reader in your smart phone or tablet, read the QR Code shown below and follow the same steps as you would from your laptop or computer.

If you're viewing this document as an interactive PDF, you may simply click on the QR Code below to access the Prime Design website.



USAM-URX001E-US01 Rev-C 1016