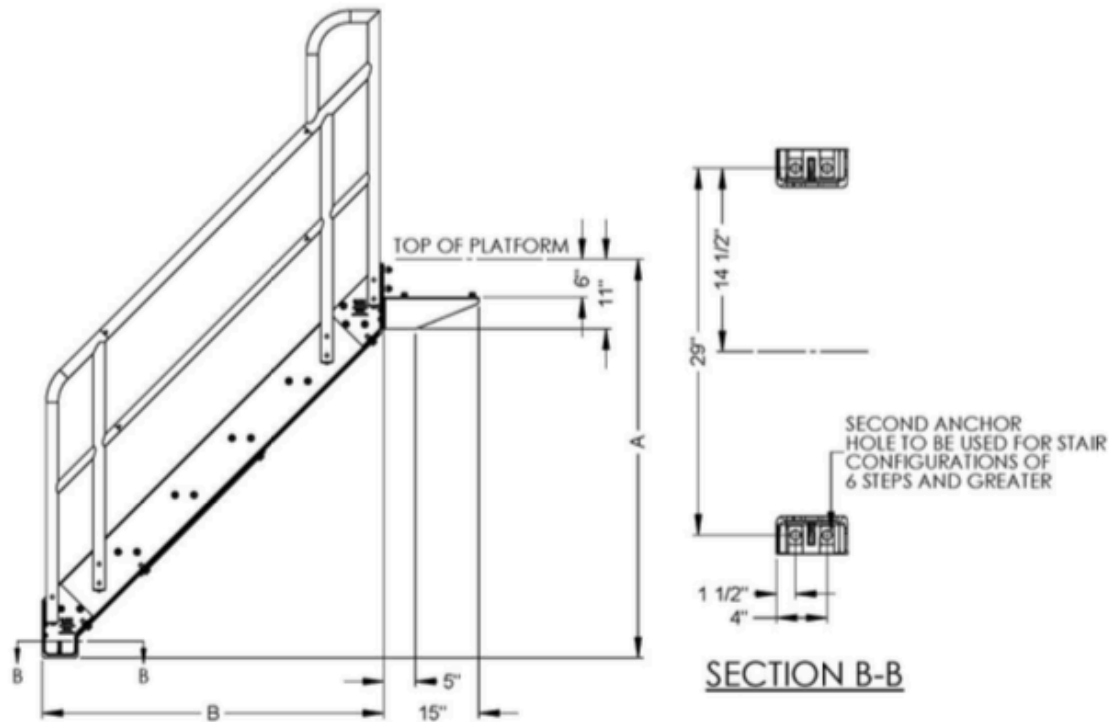


# COMPONENT ANCHOR LAYOUT

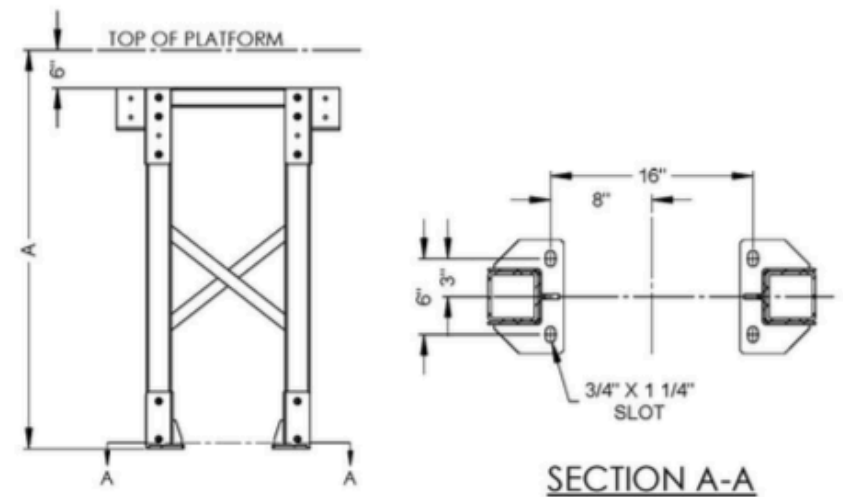


## Stair Unit

5/8" diameter anchor bolts required for 3/4" diameter holes in base plate.

Two (2) anchor bolts required for units less than 6 step.

Four (4) anchor bolts required per stair unit for 6 step stair units and greater.



## Tower Supports

5/8" diameter anchor bolts required for 3/4" x 1 1/4" slots in base plate.

Four (4) anchors required per tower.