



RailGuard 200 Non-Penetrating Safety Guardrail System



From the leaders in Passive Fall Protection, RailGuard Safety Guardrail systems protect employees or any contractor/serviceman who may not be familiar with your safety policy requirements. With a passive guardrail system installed, you will have piece of mind that Safety is always in place.

THE ORIGINATOR: For more than 35 years, RailGuard 200 has been protecting workers at-height. RailGuard exceeds OSHA requirements for temporary and permanent guardrail applications.

NON-PENETRATING: Maintain rooftop integrity with the weighted base design. Simply place the base in the desired location, drop in the rail section and pin it. No tools or drilling required.

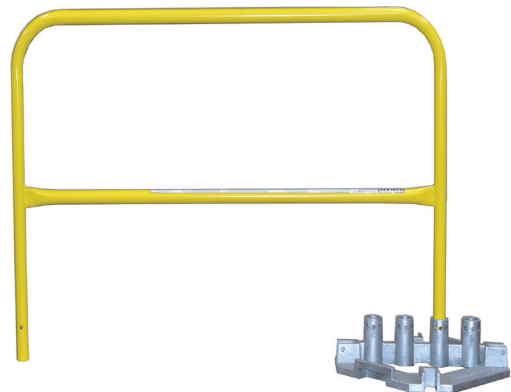
CUSTOMIZABLE: RailGuard is available in 3 standard sizes with your choice of finish. 10, 7.5, and 5ft. sections. For that last section or obstacle, select an adjustable rail section. Add a self closing or swing gate to complete your system.

NOT JUST FOR ROOFTOPS: RailGuard 200 systems can also be used for loading docks/pits, mezzanines, or machine guarding. A variety of permanent base mounting

styles are available. Let your Garlock Representative help you build a solution for your passive fall protection needs.

EASY AS 1-2-3 : Measure jobsite, then simply:

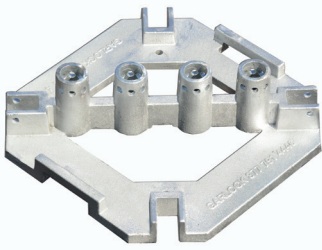
1. Count the number of rail sections including outriggers. (Tip use 10ft. sections for as much as possible, and 5ft. for outriggers)
2. Order the same amount of bases + (1) for end.
3. For every base, order (2) pins



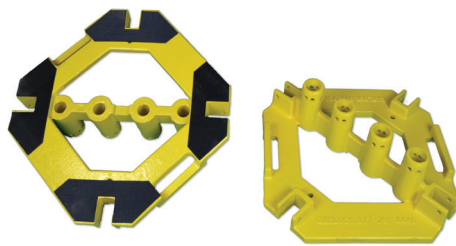
RailGuard 200 System
(1) Rail, (1) galvanized base, and (2) pins required

www.garlocksafety.com

RAILGUARD 200 FEATURES:



Std. galvanized base



Optional yellow base with pads



Base transporter



Transport cart option



Adjustable rail sections



InvisiRail adaptors

SPECIFICATIONS

Base Plate

Mounts up to four rail sections
Allows 90° or 45° turns
Narrow 3-1/4" space between rails
90 lbs.

Rail Sections

Top Rail Height = 42" tall
Mid-Rail Height = 20" tall
Three standard lengths: 10', 7' 6", 5'
Custom sizes and colors available
Standard rail section 16 ga. welded steel.

Usage Recommendations

1. End all configurations with either a closed loop that connects all bases and rail sections, or the use of a 5 foot Outrigger System to provide the needed counterbalance.
2. Configurations with Outrigger Systems require one additional base.
3. Locking pins must be used to secure all rails into the bases.
4. Use toe boards when there is a danger of materials falling.

Multiple color options available.



Visit www.ralcolor.com for color choices

**Meets OSHA 1910.23(c)
and 1926.502 (b)**

RailGuard 200 has been deemed OSHA compliant by an independent certified Safety Engineering firm. Test results available upon request.

FULL PRODUCT LINE



Distributed By:



www.garlocksafety.com

2601 Niagara Lane North Plymouth, MN 55447
(877) 791-4446 / P: (763) 694-2624 / F: (800) 820-3268