



POLY BURLAP CURING BLANKETS



BURLAP WET CURE BLANKETS

- 5 mil white coated poly sheeting laminated onto 10 oz. burlap sheet
- 10' x 100' roll
- "Wet cure" is achieved by dampening the concrete surface then applying Poly Burlap
- Burlap faces down to absorb and retain moisture while the white reflective poly faces up reflecting heat and sunlight
- Burlap meets AASHTO M-171 and M-182
- Meets ASTM C156 and ASTM C171 for moisture retention



POLY BURLAP CURING BLANKETS

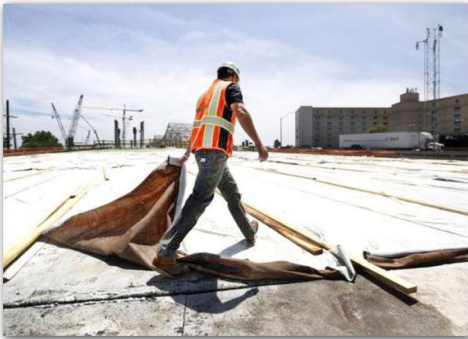
PB series

PRODUCT BENEFITS

- Quality lamination between the two fabrics
- Burlap is moisture absorbent material
- White poly reflects intense heat & sunlight
- Material is flexible and easy handle
- Meets DOT requirements for curing
- Reuseable, easy to store

APPLICATIONS

- Freshly poured concrete
- Interstates & highway projects
- Bridge & overpass projects
- Decks, slabs, concrete surfaces
- Retain walls & concrete columns
- Vertical concrete construction



ROLL SIZE	DESCRIPTION	AASHTO SPECIFICATION	ITEM NO.	PACKAGING
10' x 100'	5 mil poly, 10 oz. burlap	M-171	PB-10100	1/bag, 24/pallet

