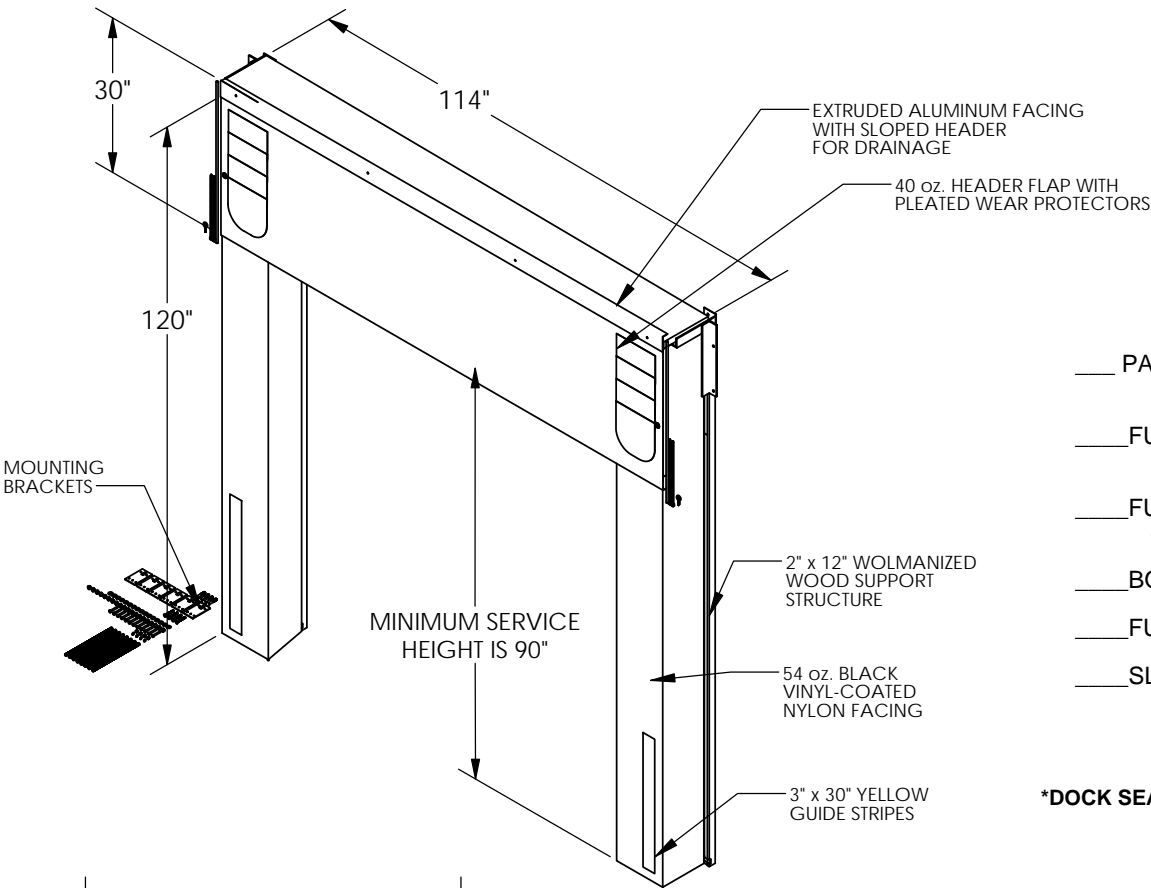


DOCK SEAL/SHELTER - D-150/650-12

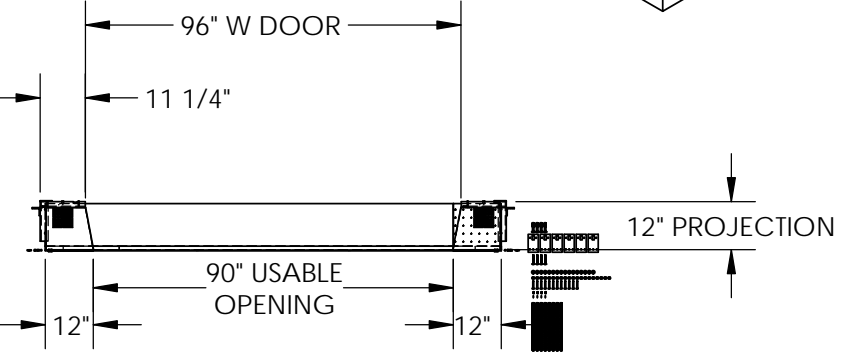
APPROX WEIGHT: 151.01 lbs.
DOES NOT INCLUDE WEIGHT OF POWER OR PACKAGING!!!

ANY ADDITIONS, DELETIONS, OR OMISSIONS MUST BE CORRECTED ON THIS DRAWING AS THIS DRAWING WILL BE CONSIDERED ALL INCLUSIVE



***OPTIONS:**

- ___ PARTIAL ARMOUR PLEATS (TOP THREE FEET ONLY)
 - ___ FULL HEIGHT ARMOUR PLEATS - 8" EXPOSURE WITH 12 1/2" PLEATS
 - ___ FULL HEIGHT ARMOUR PLEATS - 4" EXPOSURE WITH 12 1/2" PLEATS
 - ___ BOTTOM FOAM BUN/BUMPER PAD
 - ___ FULL HEIGHT GUIDE STRIPS
 - ___ SLOPED VERTICAL SIDES FOR INCLINED/DECLINED DOCK APPROACH
- *AVAILABLE AT ADDITIONAL COSTS*
- *DOCK SEAL/SHELTER REPAIR KITS ARE AVAILABLE***



UNIT IS SPECIAL AND NON RETURNABLE

ALL GRAPHICS PROVIDED ARE FOR REFERENCE ONLY. IF CERTAIN DIMENSIONS ARE CRITICAL PLEASE VERIFY THOSE DIMENSIONS WITH YOUR SALESPERSON

DIMENSION TOLERANCE $\pm 1/4"$

FOR INTERNAL USE ONLY PROJECT SIGN OFF	
SALES	
ENG.	
FAB.	
POWER	

STANDARD FEATURES

MODEL NUMBER IS D-150/650-12
DOCK SEAL/SHELTER PROJECTION IS 12"
DOOR OPENING IS 8 FEET WIDE x 10 FEET HIGH
DOCK HEIGHT IS 48 INCHES
COVERING CONSTRUCTED OF SLOPED WOLMANIZED WOOD WITH ALUMINUM TRIM
30" HIGH FLAP CONSTRUCTED OF 40 OZ BLACK VINYL-COATED NYLON
SEAL SIDES ARE FILLED WITH HIGH DENSITY POLYURATHANE FOAM
2" x 12" WOLMANIZED LUMBER SUPPORTING STRUCTURE

SPECIAL FEATURES

NONE

**A
P
P
R
O
V
A
L**

I, THE UNDERSIGNED, AGREE THAT THE PRODUCT AS REPRESENTED SATISFIES DESIGN AND DIMENSION REQUIREMENTS. I ALSO ACKNOWLEDGE MY DUTY TO CONFIRM PRODUCT AND INSTALLATION COMPLIANCE WITH ALL APPLICABLE FEDERAL, STATE AND LOCAL REGULATIONS AND STANDARDS.

ANY MODIFIED UNITS ARE NON-RETURNABLE

[] As drawn [] As marked

Signed: _____ Date: _____

Printed Name: _____

LEAD TIME WILL START UPON RECEIPT OF SIGNED APPROVAL DRAWING

DISTRIBUTOR'S NAME:		P.O.#
VESTIL MANUFACTURING		X
DRAWN BY: BCN		W.O.#
DATE: 5/10/2016		X
REFERENCE: X	SCALE: 1:35	SALES: X
QUOTED LEAD TIME: X	QUOTE # X	FILE NAME:
		35-007-040

ANY ADDITIONS, DELETIONS, OR OMISSIONS MUST BE CORRECTED ON THIS DRAWING, AS THIS WILL BE CONSIDERED ALL INCLUSIVE.