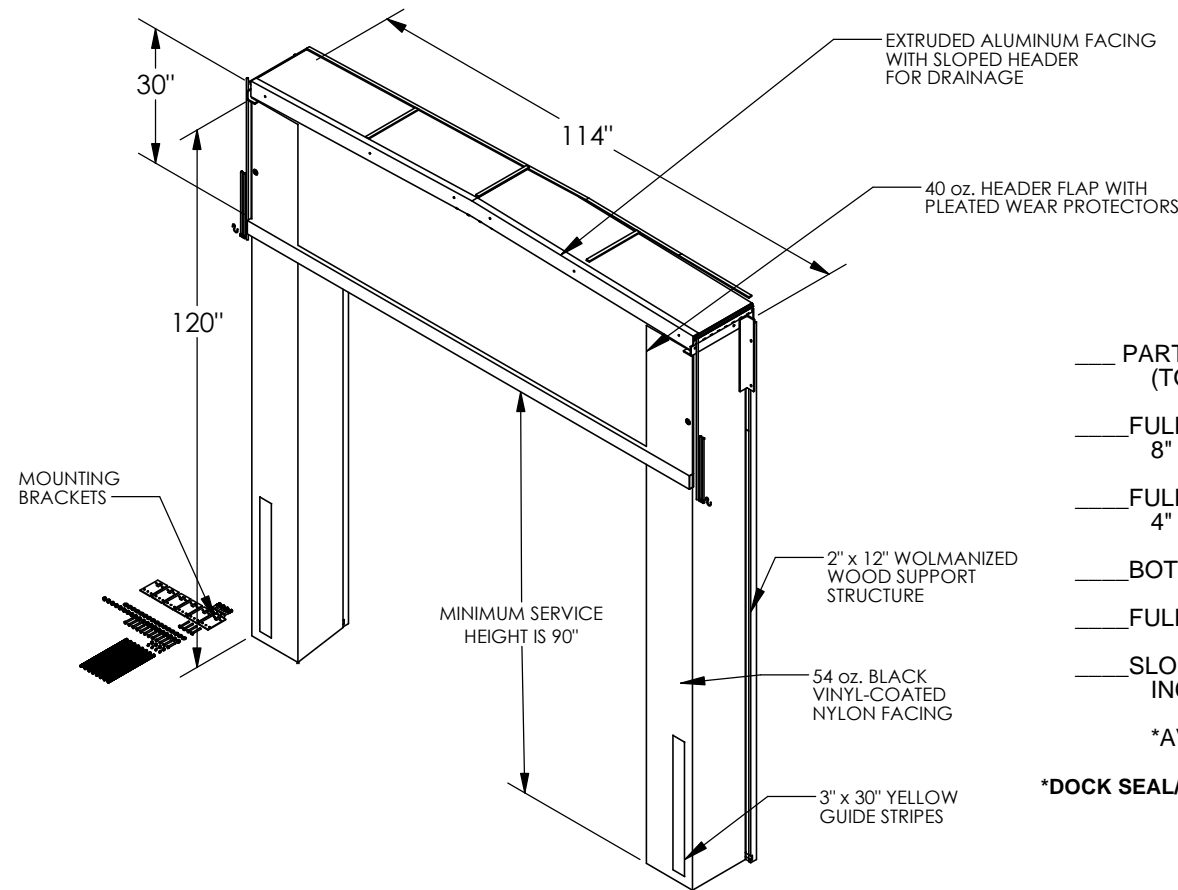


DOCK SEAL/SHELTER - D-150/650-15

APPROX WEIGHT: 164.33 lbs.
DOES NOT INCLUDE WEIGHT OF POWER OR PACKAGING!!!

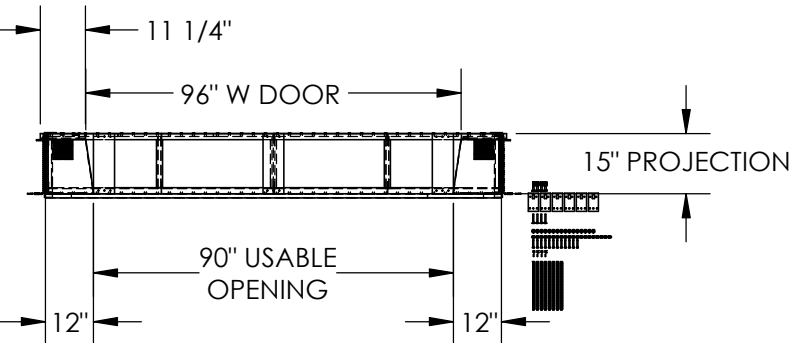
ANY ADDITIONS, DELETIONS, OR OMISSIONS MUST BE CORRECTED ON THIS DRAWING AS THIS DRAWING WILL BE CONSIDERED ALL INCLUSIVE



*OPTIONS:

- ___ PARTIAL ARMOUR PLEATS (TOP THREE FEET ONLY)
 - ___ FULL HEIGHT ARMOUR PLEATS - 8" EXPOSURE WITH 12 1/2" PLEATS
 - ___ FULL HEIGHT ARMOUR PLEATS - 4" EXPOSURE WITH 12 1/2" PLEATS
 - ___ BOTTOM FOAM BUN/BUMPER PAD
 - ___ FULL HEIGHT GUIDE STRIPS
 - ___ SLOPED VERTICAL SIDES FOR INCLINED/DECLINED DOCK APPROACH
- *AVAILABLE AT ADDITIONAL COSTS*

DOCK SEAL/SHELTER REPAIR KITS ARE AVAILABLE



UNIT IS SPECIAL AND
NON RETURNABLE

ALL GRAPHICS PROVIDED ARE FOR REFERENCE ONLY. IF CERTAIN DIMENSIONS ARE CRITICAL PLEASE VERIFY THOSE DIMENSIONS WITH YOUR SALESPERSON

DIMENSION TOLERANCE $\pm 1/4"$

STANDARD FEATURES

MODEL NUMBER IS D-150/650-15
DOCK SEAL/SHELTER PROJECTION IS 15"
DOOR OPENING IS 8 FEET WIDE x 10 FEET HIGH
DOCK HEIGHT IS 48 INCHES
COVERING CONSTRUCTED OF SLOPED WOLMANIZED WOOD WITH ALUMINUM TRIM
30" HIGH FLAP CONSTRUCTED OF 40 OZ BLACK VINYL-COATED NYLON
SEAL SIDES ARE FILLED WITH HIGH DENSITY POLYURATHANE FOAM
2" x 12" WOLMANIZED LUMBER SUPPORTING STRUCTURE

SPECIAL FEATURES

NONE

**ANY ADDITIONS, DELETIONS, OR OMISSIONS MUST BE CORRECTED ON THIS DRAWING, AS THIS WILL BE CONSIDERED ALL INCLUSIVE. **

FOR INTERNAL USE ONLY PROJECT SIGN OFF	
SALES	
ENG.	
FAB.	
POWER	

APPROVAL	I, THE UNDERSIGNED, AGREE THAT THE PRODUCT AS REPRESENTED SATISFIES DESIGN AND DIMENSION REQUIREMENTS. I ALSO ACKNOWLEDGE MY DUTY TO CONFIRM PRODUCT AND INSTALLATION COMPLIANCE WITH ALL APPLICABLE FEDERAL, STATE AND LOCAL REGULATIONS AND STANDARDS.	
	ANY MODIFIED UNITS ARE NON-RETURNABLE	
	[] As drawn [] As marked	
	Signed: _____ Date: _____	
	Printed Name: _____	
	LEAD TIME WILL START UPON RECEIPT OF SIGNED APPROVAL DRAWING	

DISTRIBUTOR'S NAME:		P.O.#
VESTIL MANUFACTURING		X
DRAWN BY: BCN		W.O.#
DATE: 5/5/2016		X
REFERENCE: X	SCALE: 1:35	SALES: X
QUOTED LEAD TIME: X	QUOTE # X	FILE NAME:
		35-007-043