



350 LB



**OUR CARTS
HAUL
MORE**

**PROUDLY
MADE IN THE
USA**



**BUILT
HEAVY DUTY
TO OUTLAST
OTHERS**



**THREE
YEAR
LIMITED
WARRANTY**

FEATURES

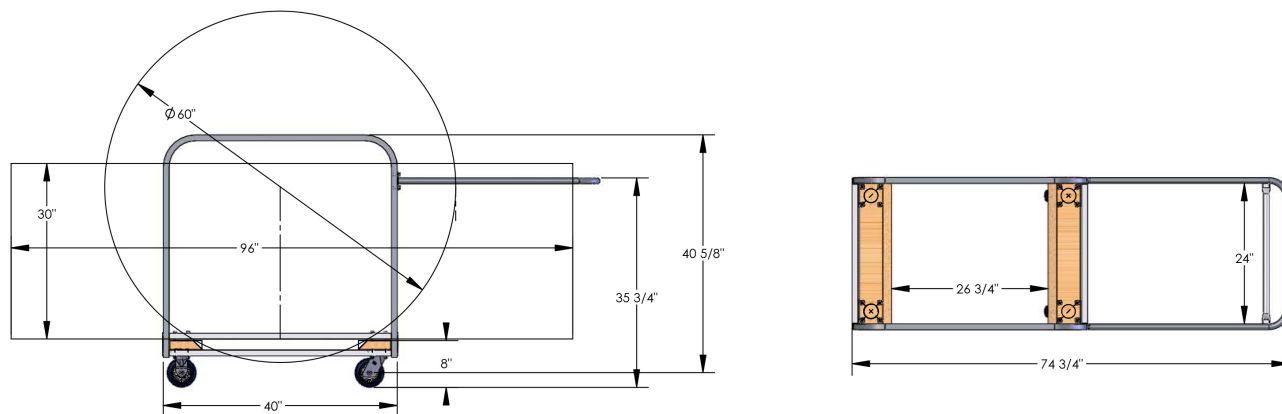
- 5" casters; 2 swivel, 2 fixed
- Holds up to six 8' rectangle tables
- 350 lb capacity

STANDARD AMERICAN CART FEATURES

- **Made in the USA**
Hand crafted at our Ohio plant.
- **Heavy-duty comes standard**
American Carts are all built to heavy duty specs
- **Powder coated finish**
Protects the steel and provides a lasting finish
- **Steel construction**
Built from American sourced steel
- **Easy to operate**
Designed to get work done with less muscle strain and simple operation.
- **Ready to ship**
in stock and ready to ship
- **Three Year Limited Warranty**

AMERICAN CART & RACK

MANUFACTURED BY GRANITE INDUSTRIES



Dimensions:	W: 26"	D: 75"	H: 43"
--------------------	---------------	---------------	---------------

Weight:	64 lbs.	Capacity:	350 lbs.
----------------	---------	------------------	----------

Typically Ships:	UPS; some assembly required.
-------------------------	------------------------------