

# ROUND & RECTANGLE TABLE STORAGE CARTS

## INSTRUCTION MANUAL



67120 & 67121

## CONTENTS

Specs .....	3
Parts Diagram .....	4
Assembly .....	5

## TOOLS NEEDED

- 1/2" Wrench
- Socket Wrench with 1/2" Socket
- Box Cutters / Utility Knife

## STANDARD ON ALL AMERICAN CART PRODUCTS

### **Made in the USA**

Hand crafted at our Ohio plant.

### **Heavy-duty comes standard**

American Carts are all built to heavy duty specs

### **Powder coated finish**

Protects the steel and provides a lasting finish

### **Steel construction**

Built from American sourced steel

### **Easy to operate**

Designed to get work done with less muscle strain and simple operation

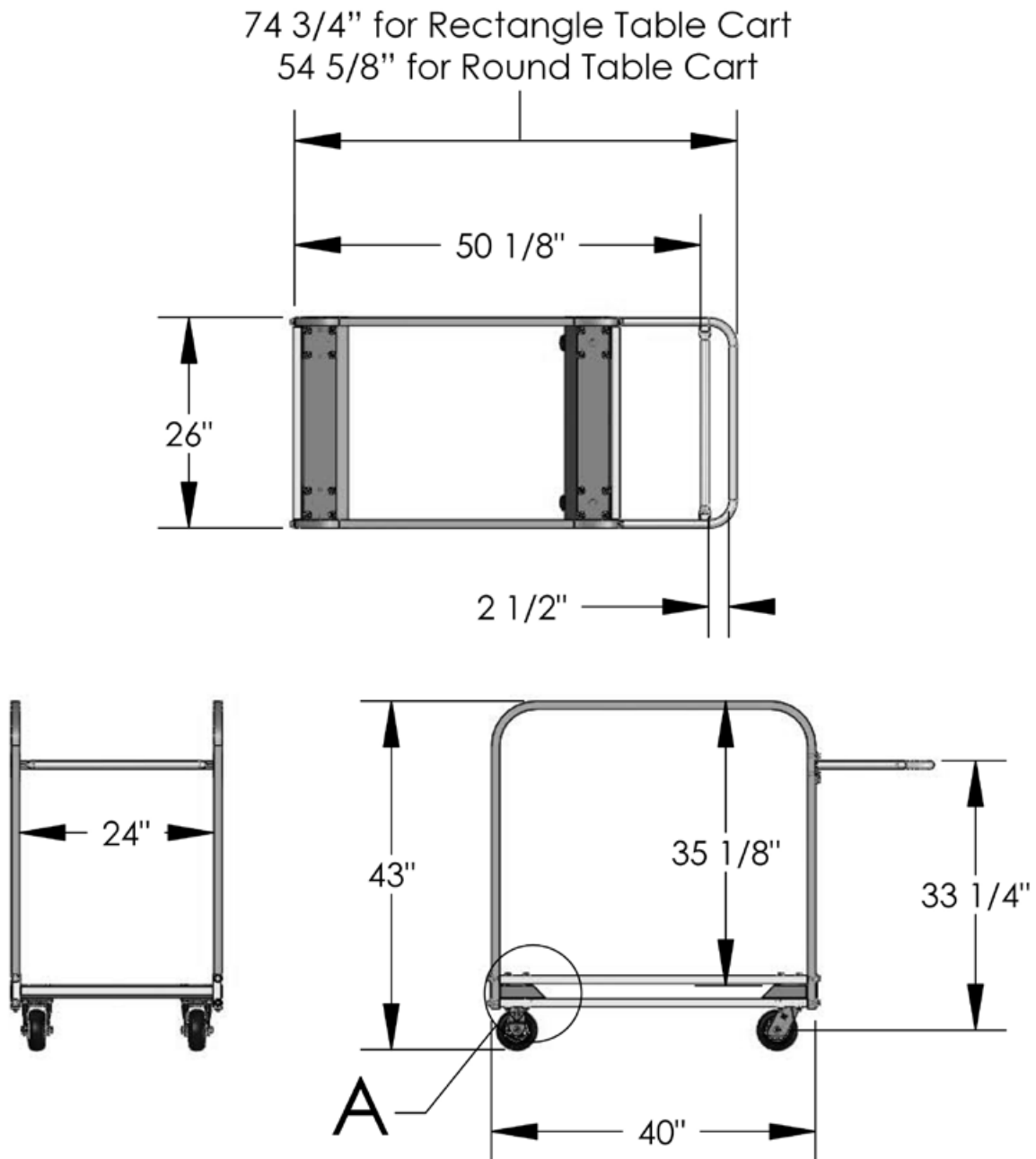
## WARRANTY

3 Year Limited Warranty. Carts, excluding any finishes, casters and wheels are warranted for three (3) years from date of original purchase. Casters and wheels are warranted for 90 days from date of original purchase. We will repair, without charge, any defect due to faulty material or workmanship. These warranties do not cover failures due to abuse, misuse, improper installation, accidental damage or when repairs or modifications have been made or attempted to be made by anyone other than Granite Industries. Any defective products that meet warranty specifications and Granite Industries approval, may be returned to the factory to be repaired or replaced free of charge. (Granite Industries will pay to ship replacement item(s) to the customer; however the customer is responsible for shipment of products to the factory.) This remedy is the sole remedy in contract, tort or otherwise, and Granite Industries is not liable for incidental, consequential or special damages. These warranties give you specific legal rights, and you may have other rights which vary from state to state. Should you have any questions, contact Granite Industries (Proof of purchase may be required).



**Customer Service**  
**877-447-2648**  
**M-F, 8am - 5pm EST**

## SPECS



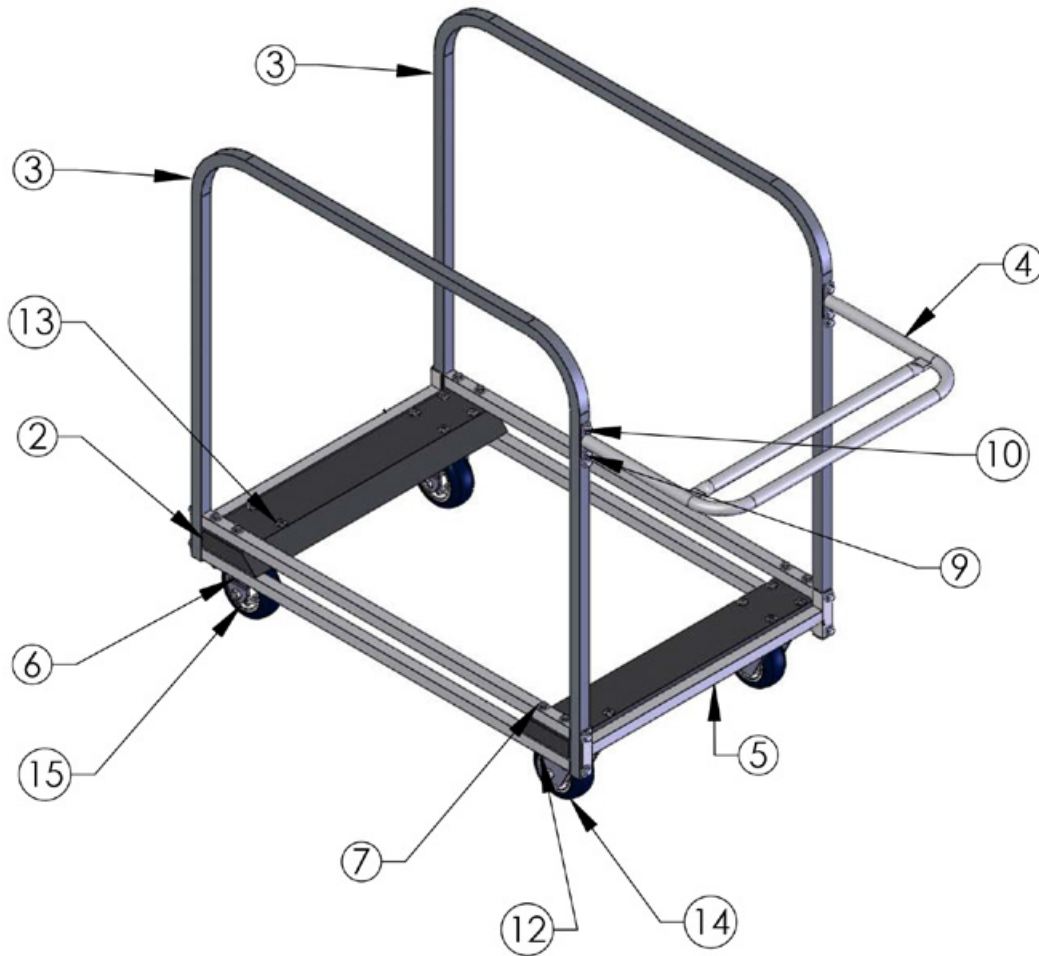
Round Table Cart Item No. 67120

<b>Dimensions:</b>	<b>W:</b> 26"	<b>D:</b> 55"	<b>H:</b> 43"
<b>Weight:</b>	60 lbs.	<b>Capacity:</b>	350 lbs.

Rectangle Table Cart Item No. 67121

<b>Dimensions:</b>	<b>W:</b> 26"	<b>D:</b> 75"	<b>H:</b> 43"
<b>Weight:</b>	64 lbs.	<b>Capacity:</b>	350 lbs.

## PARTS DIAGRAM



ITEM NO	QTY	PART NO	DESCRIPTION	
2	2	MI-10-0299	Carpeted Wood	
3	2	MI-12-2428	Cart Body - Side	
4	1	MI-12-2429	Cart Handle - Round Table Cart	
4	1	MI-12-2430	Cart Handle - Rectangle Table Cart	
5	2	MI-12-3468	Bottom Frame	
6	8	PI-01-0017	5/16" Nylon Locknut	
7	46	PI-01-0031	5/16" Washer	
8	16	PI-01-0091	5/16" Bolt - 1-3/4"L	Use 1/2" Wrench / Socket
9	14	PI-01-0177	5/16" Hex Bolt - 1"L	Use 1/2" Wrench / Socket
10	30	PI-01-0178	5/16" Lock Washer	
11	12	PI-01-0182	5/16" Nut Insert	
12	8	PI-01-0328	5/16" Bolt - 4"L	
13	16	PI-01-0329	5/16" 4 Prong Tee Nut	
14	2	PI-06-0036	5" Swivel Caster	
15	2	PI-06-0037	5" Rigid Caster	



## STEP 1: FRAME ASSEMBLY

COMPONENTS		
ITEM NO	QTY	DESCRIPTION
3	2	Cart Body - Side
5	2	Bottom Frame
7	8	5/16" Washer
8	8	5/16" Hex Bolt - 1"L
10	8	5/16" Lock Washer

TOOLS		
1/2" Socket or wrench		



1

Take note of the frame pieces. One side of each frame will have holes for the handle. These need to be on the same side when you lay out your frames.



2

Align the bottom frame piece to a side frame piece.



3

Attach using a 1" L 5/16" bolt with a lock washer and standard washer. Tighten down with a 1/2" socket. Repeat for all bolts on both sides.



### CHECK POINT

Your cart should look like this. If so, continue onto the next step.

## STEP 2: HANDLE ASSEMBLY

COMPONENTS		
ITEM NO	QTY	DESCRIPTION
4	1	Cart Handle
7	4	5/16" Washer
8	4	5/16" Hex Bolt - 1"L
10	4	5/16" Lock Washer

TOOLS		
1/2" Socket or wrench		



1

Align the handle over the holes. Slide a lock washer and a washer onto the bolt and insert into the hole.



2

Attach using a 1" L 5/16" bolt with a lock washer and standard washer. Tighten down with a 1/2" socket.



3

Repeat steps 1 and 2 for the remaining bolts to finish attaching the handle.



### CHECK POINT

Your cart should look like this. If so, continue onto the next step.



## STEP 3: CARPET BOARD INSTALLATION

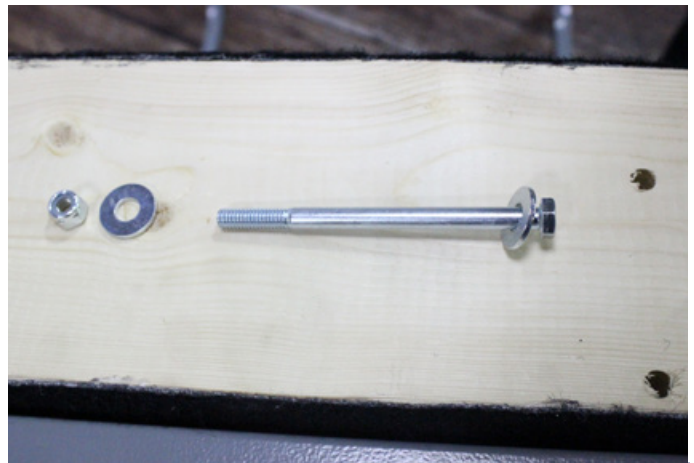
COMPONENTS		
ITEM NO	QTY	DESCRIPTION
2	2	Carpeted Wood
6	8	5/16" Nylon Locknut
7	8	5/16" Washer
12	8	5/16" Bolt - 4"L

TOOLS		
1/2" Socket or wrench		



1

Flip the cart upside down. Slide the carpet covered boards into the provided slots on the cart frame. NOTE: it is helpful to cut away the carpet from the holes.



2

Slide a washer onto the 4"L 5/16" bolt.



3

Slide the bolt through the cart frame and carpeted wood. Secure with a 5/16" washer and 5/16" nylon locknut.



4

Tighten down using a 1/2" socket. Repeat steps 1-3 for the remaining holes.

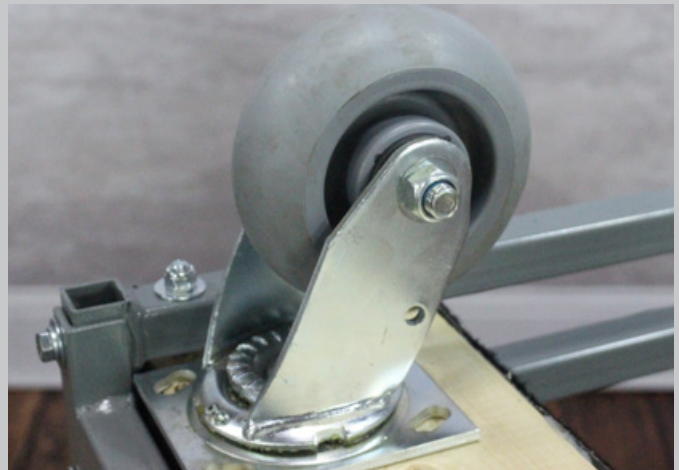
## STEP 4: CASTER ASSEMBLY

### COMPONENTS

ITEM NO	QTY	DESCRIPTION
14	2	5" Swivel Caster
15	2	5" Rigid Caster
7	16	5/16" Washer
8	16	5/16" Hex Bolt - 1"L
10	16	5/16" Lock Washer

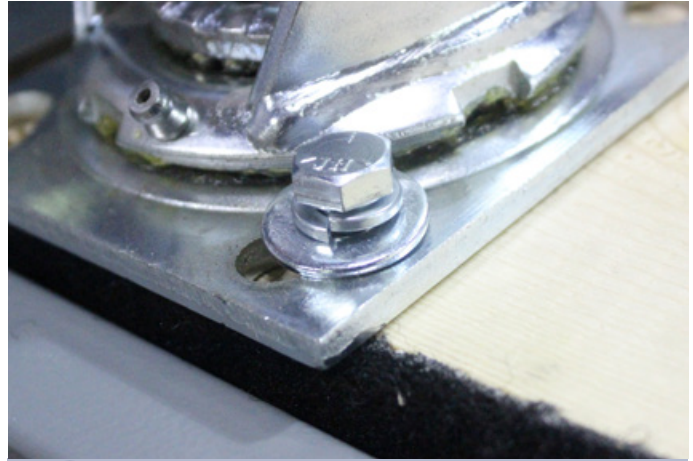
### TOOLS

1/2" Socket or wrench



1

Align the caster over the provided holes. The swivel casters will go on the end with the handle. The rigid casters go on the opposite end.



2

Secure with a 1"L 5/16" bolt, lock washer and standard washer.



3

Tighten the bolts down using a 1/2" socket. Repeat steps 1-2 for the remaining casters.



### CHECK POINT

Congratulations, your cart is now fully assembled.