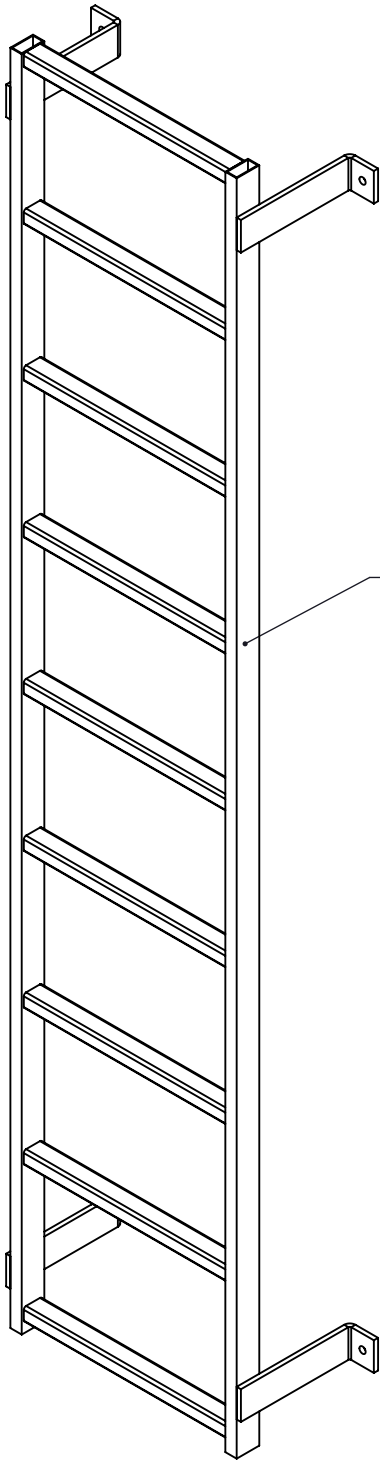
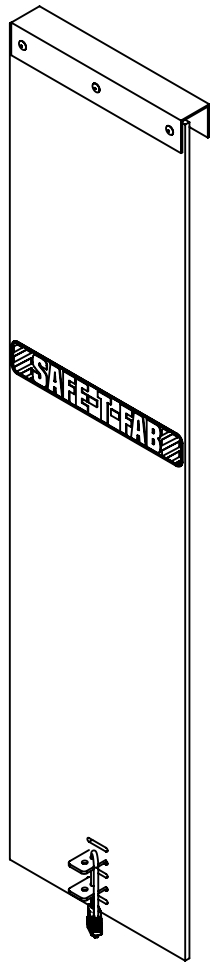


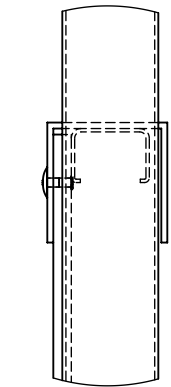
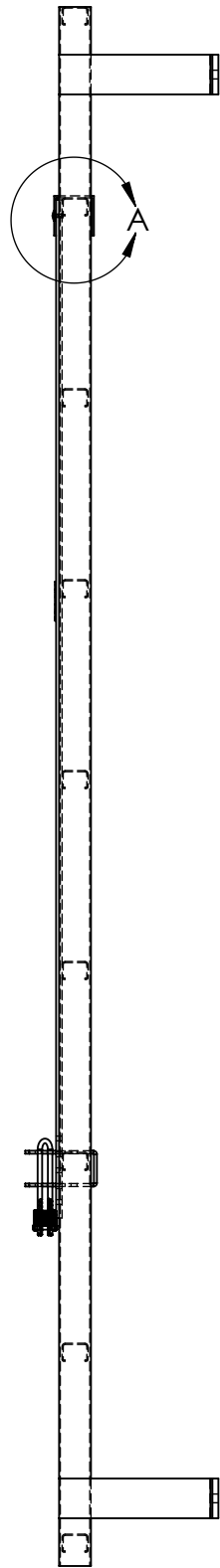
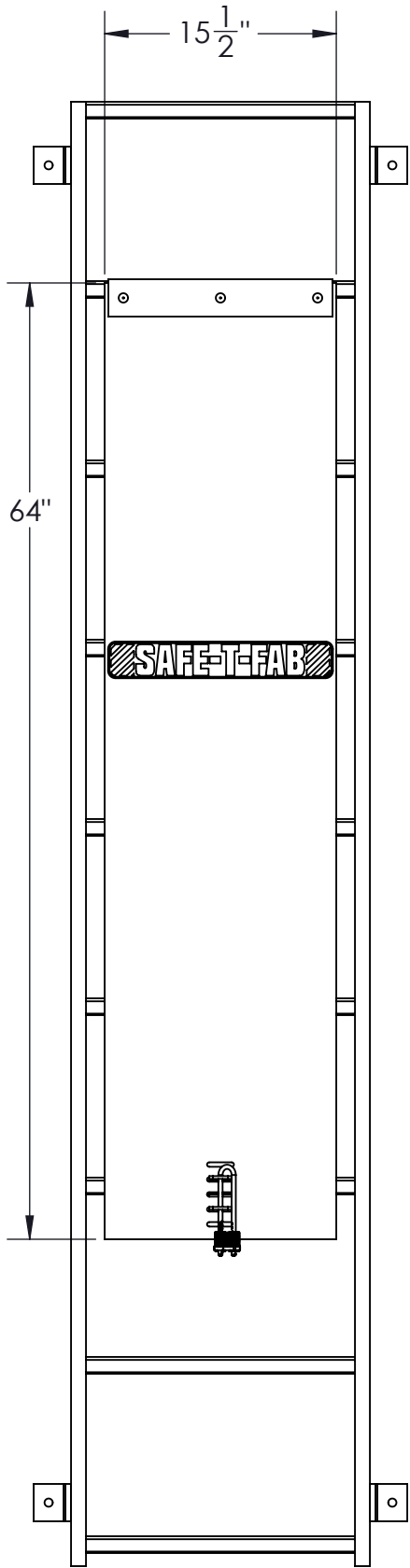
8 7 6 5 4 3 2 1

**PROPRIETARY & CONFIDENTIAL**  
THIS DRAWING IS DISCLOSED IN CONFIDENCE AND IS PROPRIETARY TO SAFE-T-FAB, A DIVISION OF INDUSTRIAL PRODUCTS LIMITED, LLC. THE INFORMATION CONTAINED WITHIN IS THE PROPERTY OF SAFE-T-FAB AND SHALL NOT BE USED, DISCLOSED TO OTHERS OR REPRODUCED WITHOUT THE EXPRESSED WRITTEN CONSENT OF SAFE-T-FAB & INDUSTRIAL PRODUCTS LIMITED, LLC. THIS NOTICE AND ANY NOTICE SET FORTH WITHIN THE DOCUMENT SHALL APPEAR IN ANY SUCH WHOLE OR PARTIAL REPRODUCTION IF CONSENT IS GIVEN FOR REPRODUCTION OF THIS DOCUMENT IN WHOLE OR IN PART.  
COPYRIGHT SAFE-T-FAB, LLC 2022

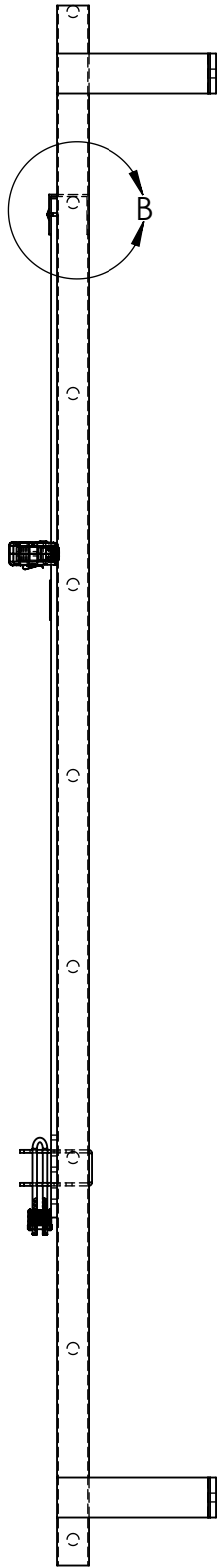
D  
C  
B  
A



MOCK UP  
SECTION OF  
LADDER



DETAIL A  
SCALE 1 : 4  
**SHOWN ON  
PERFORATED  
RUNGS**



DETAIL B  
SCALE 1 : 4  
**SHOWN ON  
REBAR RUNGS**

D  
C  
B  
A

CUSTOMER APPROVAL SIGNATURE:				WEIGHT	FINISH	LEAD TIME
APPROVAL DATE:				62.71		TBD
UNLESS OTHERWISE SPECIFIED:				MATERIAL		
DIMENSIONS ARE IN INCHES				DESIGNER	G.A.H.	
1 PL +/- .3	2 PL +/- .25	3 PL +/- .250	ANGLES +/- 2°	ENGINEER		



TITLE			DRAWING		
Vari-Safe Ladder Guard System			PROJECT		
SCALE: 1:12	SIZE <b>B</b>	REV 01	SHEET 2 OF 7		

8 7 6 5 4 3 2 1

PROPRIETARY & CONFIDENTIAL

THIS DRAWING IS DISCLOSED IN CONFIDENCE AND IS PROPRIETARY TO SAFE-T-FAB. THE INFORMATION CONTAINED WITHIN IS THE PROPERTY OF SAFE-T-FAB AND SHALL NOT BE USED, DISCLOSED TO OTHERS OR REPRODUCED WITHOUT THE EXPRESSED WRITTEN CONSENT OF SAFE-T-FAB. THIS NOTICE AND ANY NOTICE SET FORTH WITHIN THE DOCUMENT SHALL APPEAR IN ANY SUCH WHOLE OR PARTIAL REPRODUCTION IF CONSENT IS GIVEN FOR REPRODUCTION OF THIS DOCUMENT IN WHOLE OR IN PART. COPYRIGHT SAFE-T-FAB, LLC 2021

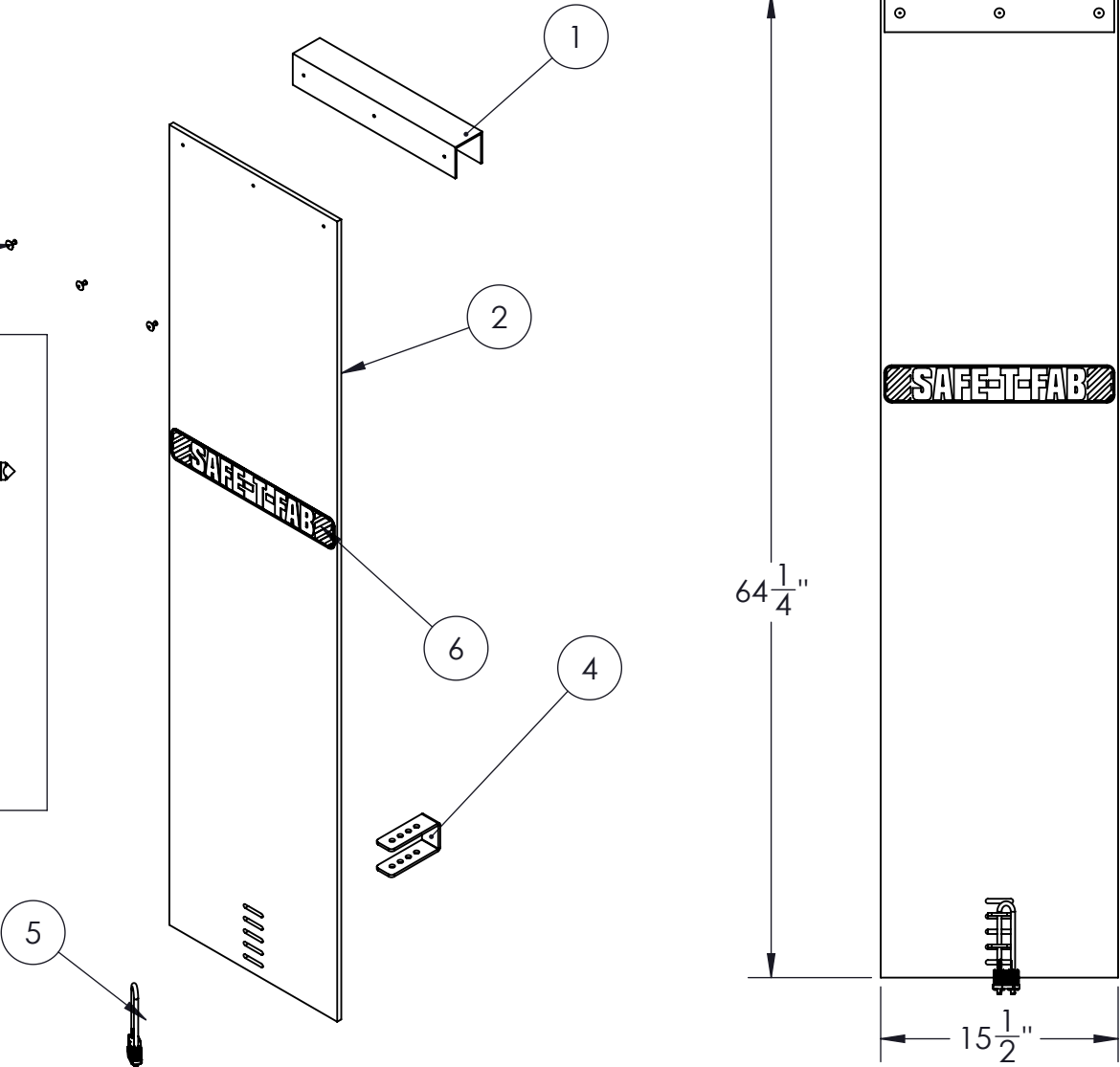
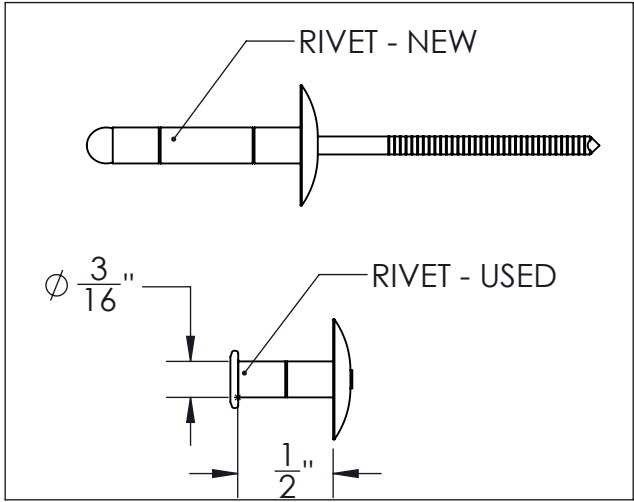
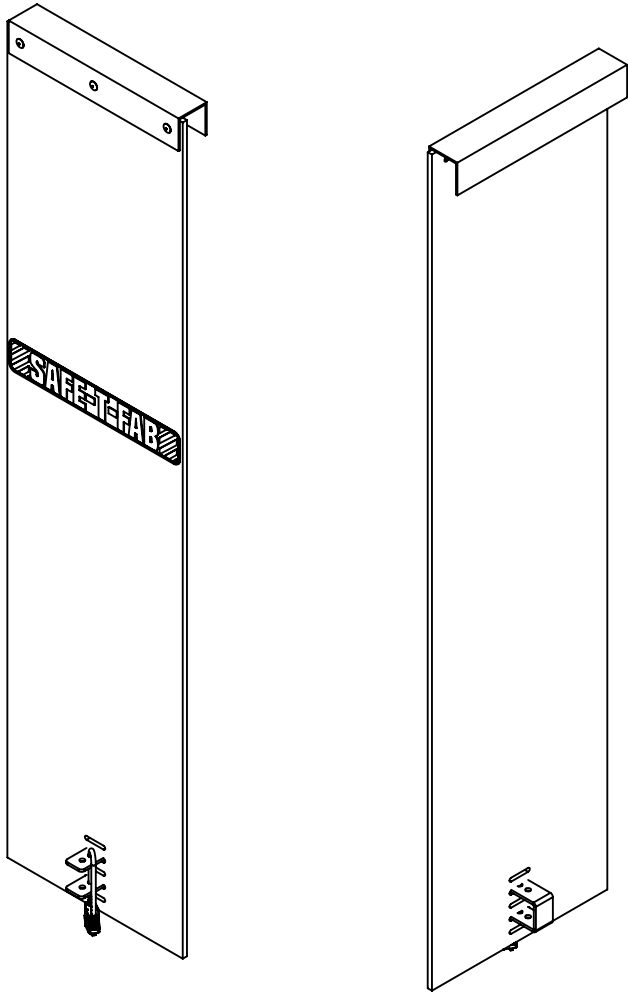
ITEM NO.	PART NUMBER	DESCRIPTION	QTY.
1	2.5 x 2.5 x .125 Aluminum U-Channel	2.5 x 2.5 x .125 Aluminum U-Channel	1
2	Vari-Safe - Ladder Guard - Plastic Body	Vari-Safe - Ladder Guard - Plastic Body	1
3	97530A516_Wide-Thickness Range Blind Rivets	Wide-Thickness Range Blind Rivets	3
4	Vari-Safe Ladder Guard Hasp	Vari-Safe Ladder Guard Hasp	1
5	1182A1	Adjustable-Clearance Padlock	1
6	PRODUCT STICKER		1

D

C

B

A



D

C

B

A

8 7 6 5 4 3 2 1

CUSTOMER APPROVAL SIGNATURE:				WEIGHT	FINISH	LEAD TIME
APPROVAL DATE:				14.48	Mill/RAW	TBD
UNLESS OTHERWISE SPECIFIED:				MATERIAL	Alum/HDPE	
DIMENSIONS ARE IN INCHES				DESIGNER	G.A.H.	02/01/2023
1 PL +/- .3	2 PL +/- .25	3 PL +/- .250	ANGLES +/- 2°	ENGINEER		

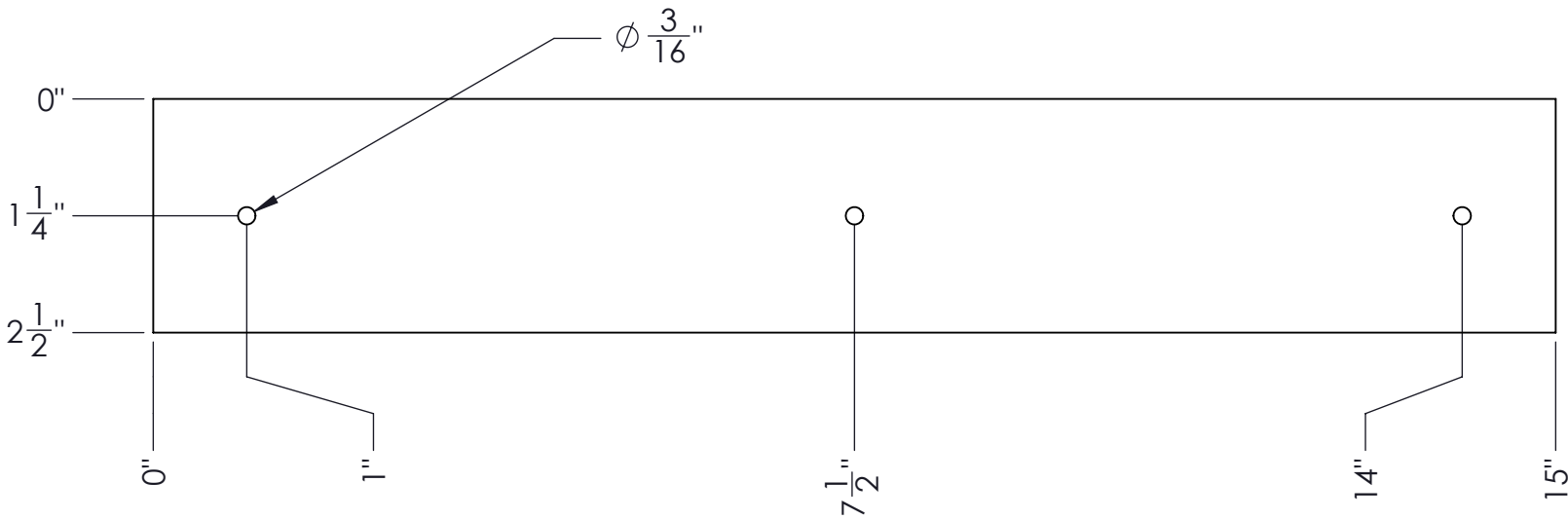
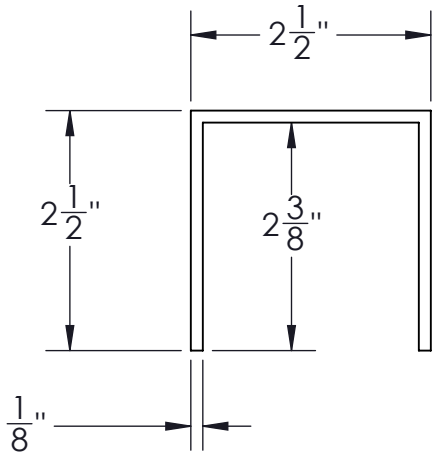
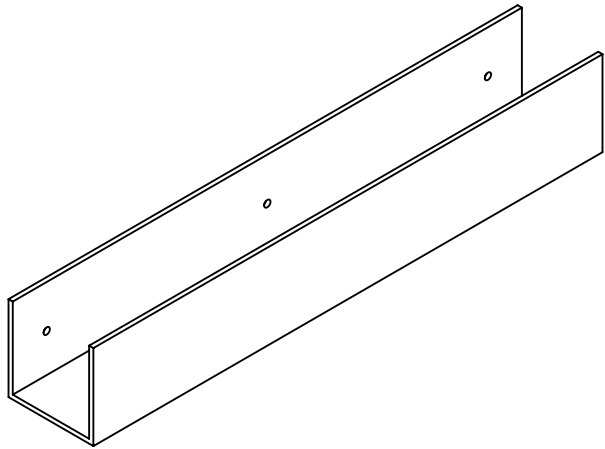


TITLE				DRAWING	
Vari-Safe Ladder Guard Assembly				Vari-Safe Ladder Guard	
				PROJECT	
SCALE: 1:12		SIZE	B	REV	01
				SHEET 3 OF 7	


8 7 6 5 4 3 2 1

PROPRIETARY & CONFIDENTIAL

THIS DRAWING IS DISCLOSED IN CONFIDENCE AND IS PROPRIETARY TO SAFE-T-FAB. THE INFORMATION CONTAINED WITHIN IS THE PROPERTY OF SAFE-T-FAB AND SHALL NOT BE USED, DISCLOSED TO OTHERS OR REPRODUCED WITHOUT THE EXPRESSED WRITTEN CONSENT OF SAFE-T-FAB. THIS NOTICE AND ANY NOTICE SET FORTH WITHIN THE DOCUMENT SHALL APPEAR IN ANY SUCH WHOLE OR PARTIAL REPRODUCTION IF CONSENT IS GIVEN FOR REPRODUCTION OF THIS DOCUMENT IN WHOLE OR IN PART. COPYRIGHT SAFE-T-FAB, LLC 2021



U-CHANNEL - 1 PER  
ALUMINUM CONSTRUCTION  
MILL FINISH

<div>CUSTOMER APPROVAL SIGNATURE:</div>				WEIGHT	FINISH	LEAD TIME	<div></div>			
				1.32		TBD				
<div>APPROVAL DATE:</div>				TITLE  3 x 2 x .125 Aluminum U-Channel			DRAWING U-Channel - 15.5" Long			
UNLESS OTHERWISE SPECIFIED:							PROJECT			
DIMENSIONS ARE IN INCHES				MATERIAL	6061-T6 (SS)					
1 PL +/- .3	2 PL +/- .25	3 PL +/- .250	ANGLES +/- 2°	DESIGNER	G.A.H.					
				ENGINEER			SCALE: 1:2	SIZE B	REV 01	SHEET 4 OF 7

8 7 6 5 4 3 2 1

8 7 6 5 4 3 2 1

PROPRIETARY & CONFIDENTIAL

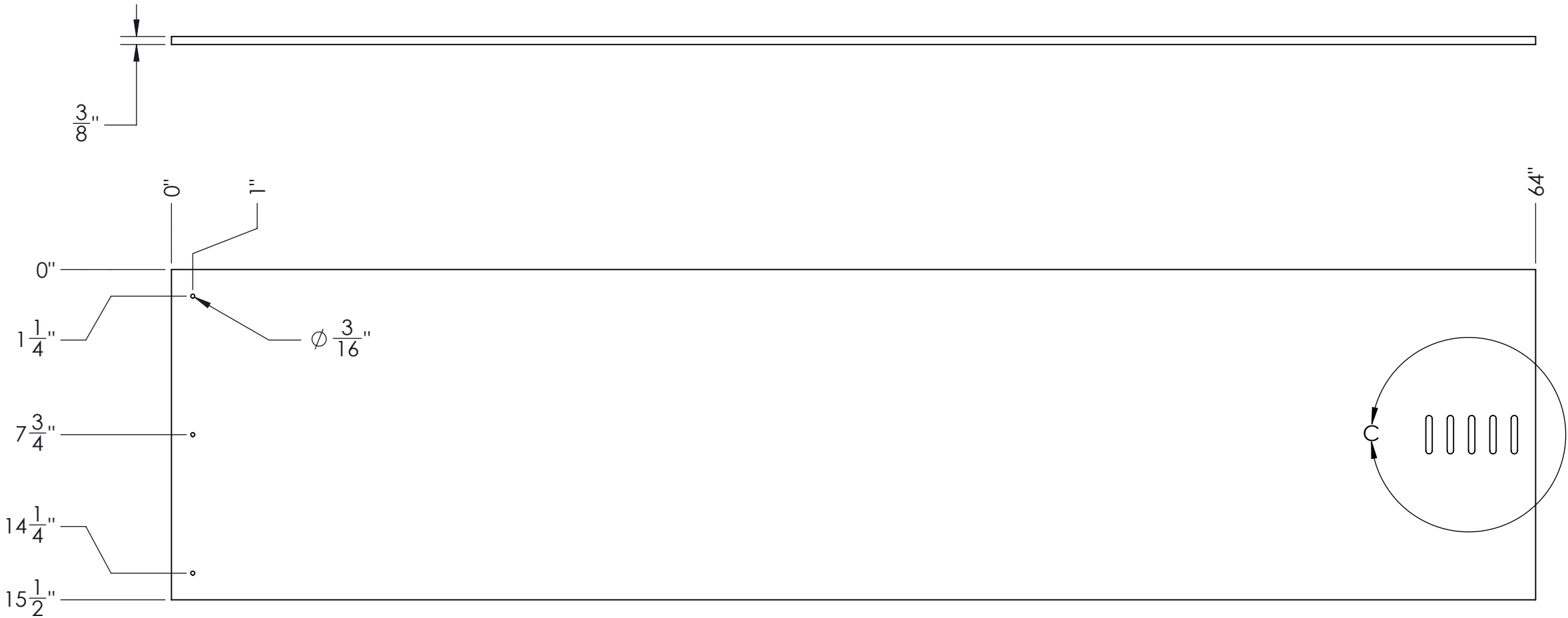
THIS DRAWING IS DISCLOSED IN CONFIDENCE AND IS PROPRIETARY TO SAFE-T-FAB. THE INFORMATION CONTAINED WITHIN IS THE PROPERTY OF SAFE-T-FAB AND SHALL NOT BE USED, DISCLOSED TO OTHERS OR REPRODUCED WITHOUT THE EXPRESSED WRITTEN CONSENT OF SAFE-T-FAB. THIS NOTICE AND ANY NOTICE SET FORTH WITHIN THE DOCUMENT SHALL APPEAR IN ANY SUCH WHOLE OR PARTIAL REPRODUCTION IF CONSENT IS GIVEN FOR REPRODUCTION OF THIS DOCUMENT IN WHOLE OR IN PART. COPYRIGHT SAFE-T-FAB, LLC 2021

D

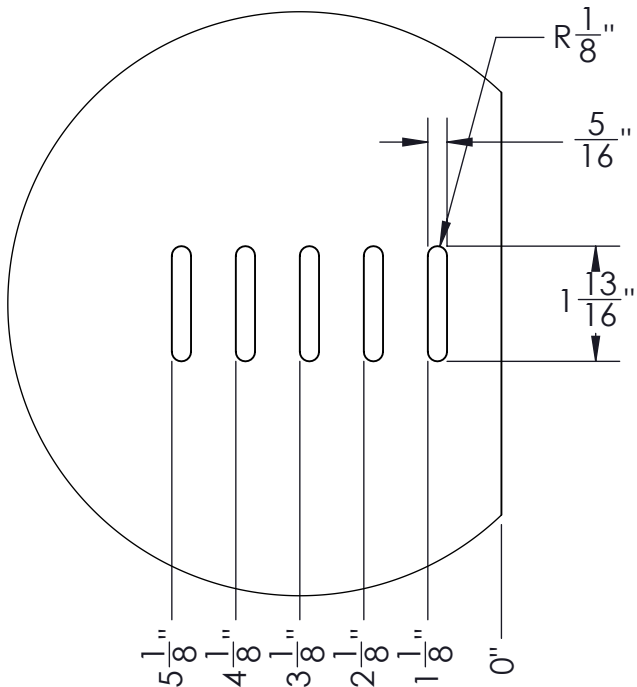
C

B


A



DETAIL C  
SCALE 1 : 3



MAIN BODY - 1 PER  
WHITE COLOR  
RAW FINISH

<div>CUSTOMER APPROVAL SIGNATURE:</div>				WEIGHT	FINISH	LEAD TIME	<div></div>			
				12.76		TBD				
<div>APPROVAL DATE:</div>				MATERIAL	PE High Density		TITLE		DRAWING	
UNLESS OTHERWISE SPECIFIED:									Body 15.5" wide	
DIMENSIONS ARE IN INCHES					DESIGNER	G.A.H.			01/25/2023	PROJECT
1 PL +/- .3	2 PL +/- .25	3 PL +/- .250	ANGLES +/- 2°	ENGINEER			SCALE: 1:6	SIZE B	REV 01	SHEET 5 OF 7

8 7 6 5 4 3 2 1

8 7 6 5 4 3 2 1

PROPRIETARY & CONFIDENTIAL

THIS DRAWING IS DISCLOSED IN CONFIDENCE AND IS PROPRIETARY TO SAFE-T-FAB. THE INFORMATION CONTAINED WITHIN IS THE PROPERTY OF SAFE-T-FAB AND SHALL NOT BE USED, DISCLOSED TO OTHERS OR REPRODUCED WITHOUT THE EXPRESSED WRITTEN CONSENT OF SAFE-T-FAB. THIS NOTICE AND ANY NOTICE SET FORTH WITHIN THE DOCUMENT SHALL APPEAR IN ANY SUCH WHOLE OR PARTIAL REPRODUCTION IF CONSENT IS GIVEN FOR REPRODUCTION OF THIS DOCUMENT IN WHOLE OR IN PART. COPYRIGHT SAFE-T-FAB, LLC 2021

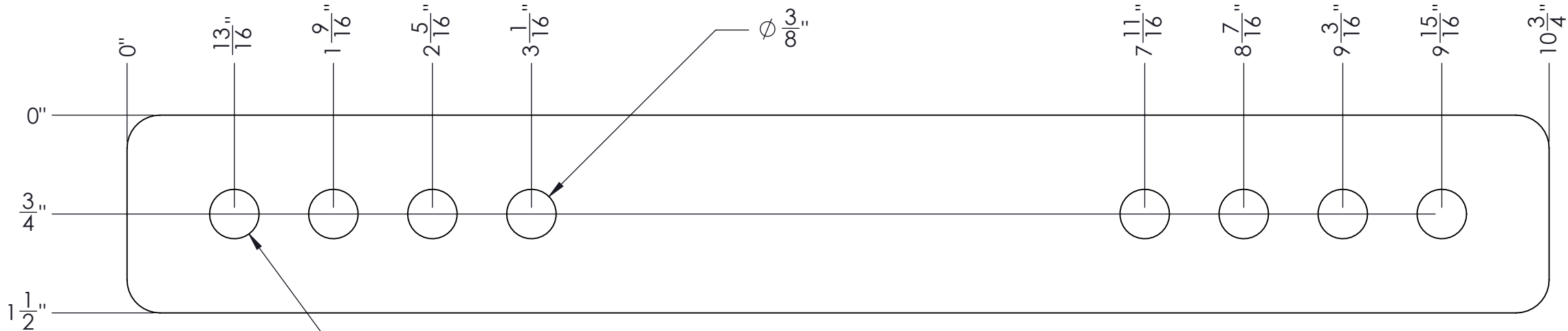
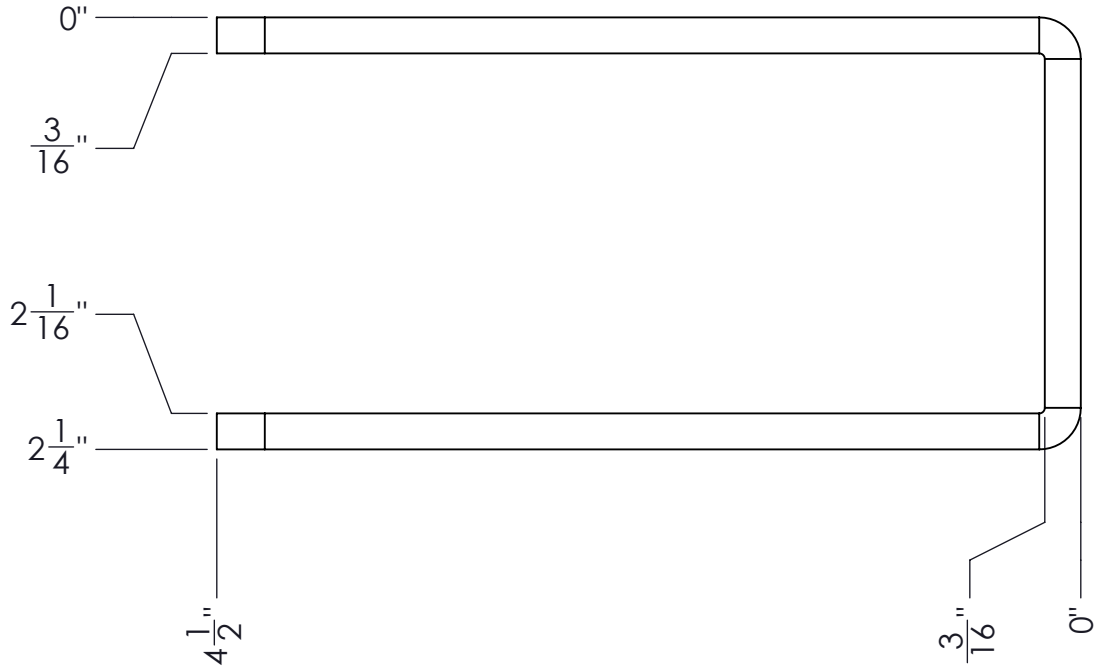
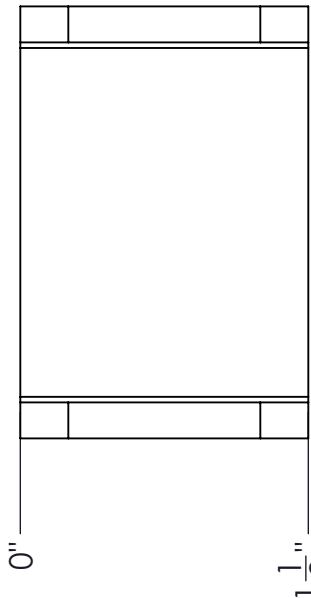
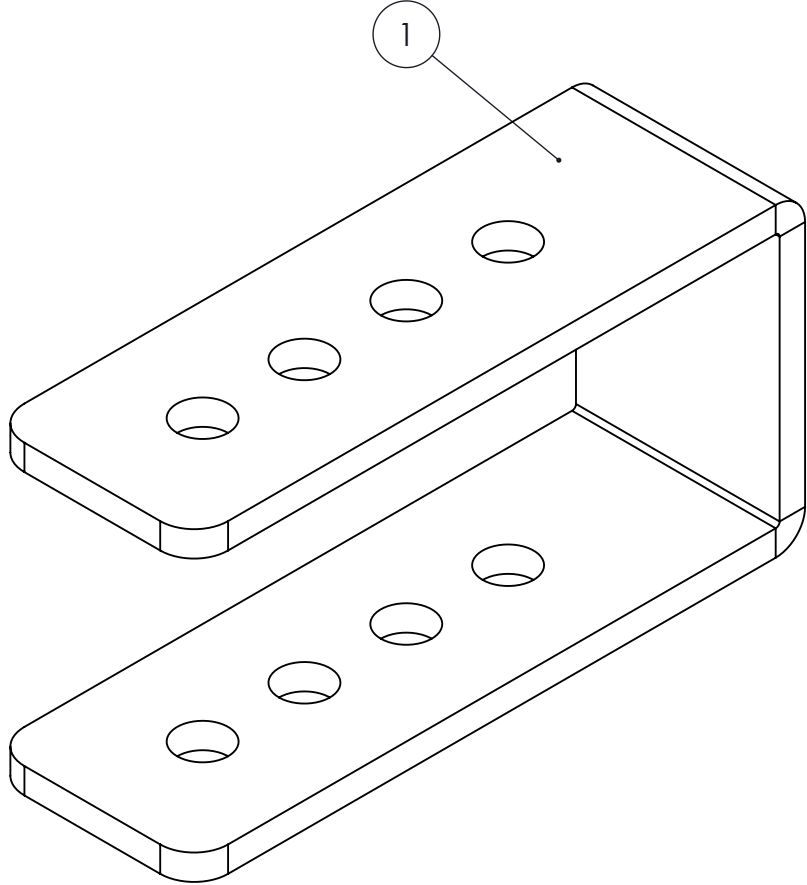
ITEM NO.	QTY.	DESCRIPTION	LENGTH	ANGLE1	ANGLE2
1	1	.25" x 2" Hasp			

D

C

B

A



FLATTENED PART FOR REFERENCE

HASP - QTY 3 pcs  
ALUMINUM CONSTRUCTION  
MILL FINISH

CUSTOMER APPROVAL SIGNATURE:				WEIGHT	FINISH	LEAD TIME		
APPROVAL DATE:				0.28	Mill	TBD		
UNLESS OTHERWISE SPECIFIED:				MATERIAL	6061-T6 (SS)		Vari-Safe Ladder Guard Hasp	
DIMENSIONS ARE IN INCHES				DESIGNER	G.A.H.	02/01/2022		
1 PL +/- .3	2 PL +/- .25	3 PL +/- .250	ANGLES +/- 2°	ENGINEER			SCALE: 1:1	SIZE B
							REV 00	SHEET 6 OF 7

8 7 6 5 4 3 2 1