

**READ THESE INSTRUCTIONS COMPLETELY BEFORE STARTING WORK.
IF YOU DON'T UNDERSTAND CALL 724-588-8600 FOR ASSISTANCE.**

INSTRUCTIONS FOR ATTACHING THE WERNER QUICKCLICK™ LADDER LEVELER

THIS KIT IS TO BE USED ON WERNER CO. LADDERS ONLY.



WARNING:

1. Failure to comply with all instructions may result in serious injury.
2. Make sure this kit fits your ladder. If you have any questions concerning the use of this kit on other Werner Co. products, call 724-588-8600 for assistance.
3. Before installing this kit, identify all kit components. If any components are missing or damaged, return the kit to place of purchase. Do not substitute any components.
4. Inspect the ladder before installing this kit. Repair or replace any damaged or missing parts before using the ladder. Use only Werner Co. repair or replacement parts. If unable to repair, discard the ladder.

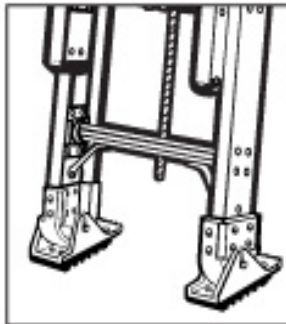
| FASTENER COMPONENTS IN KIT | | TOOLS REQUIRED |
|---|---|------------------------------|
| Quantity | Description | |
| 6 | 1-1/4" diameter fender washers | Drill with 11/32" bit |
| 6 | Locking nuts | Marking pen |
| 4 | 5/8" diameter washers | 3/16" hex key (Allen wrench) |
| 4 | 2" square washers (with slot), for use with 375# duty rated ladders only | 1/2" wrench or socket |
| 6 | 5/16" diameter mounting bolts, 1 -1/4" long | center punch |
| 2 | 5/16" diameter mounting bolts, 1" long | |
| 12 | 2" x 3/4" aluminum spacer plates | |
| 1 | Tube of metal adhesive | |
| 4 | Thin strips of double-sided adhesive foam tape | |
| Kit PK70-1 also contains 1 Leveler and 2 Base Units | | |
| Kit PK70-2 also contains 2 Base units | | |
| Kit PK70-3 also contains 1 Leveler | | |

Important: install the base unit labeled "Left" on the left side rail of the ladder and the base unit labeled "Right" on the right side of the ladder. The left/right side of the ladder is determined as you face the front (climbing side) of the ladder. Note the "UP" label on the base unit indicating which end is to point up toward the top of the ladder. The base unit must be positioned so that the release lever is at the top and pointing up toward the top of the ladder. If it is on the bottom then you must re-install it correctly. The QuickClick™ Leveler System will not function properly unless installed in this manner. Installing the base unit upside down can cause the base unit latch to release while a person is on the ladder, causing serious injury.

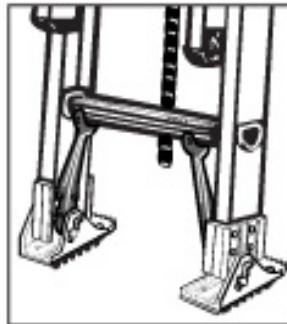
CAUTION: Do not use this product on any extension ladders that are duty rated at 200 lb. (Type III) or 225 lb. (Type II). This product is also not for use on any stepladders or step stools. Refer to table on backside of carton for ladder models which are authorized for use with this leveler.

Important First Step

There are four different types of ladder construction compatible with the QuickClick™ Leveler. Determine from the diagrams below which style applies and follow the appropriate instructions.



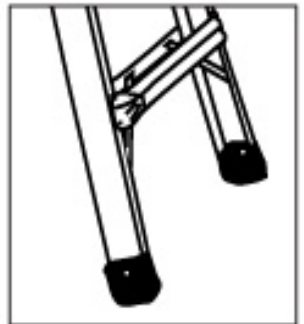
Rung and plate construction



Direct swage construction with bracing



Direct swage without bracing



Werner Telescoping Multiladder

Step A, Attaching Base Unit

Instructions For Werner Fiberglass Extension Ladders with rung and plate construction only. See Figure A.

1. Drilling holes in ladder rails:

Lay the ladder flat on the ground with the base (bottom) section facing down and extend the ladder fly (top) section out of the way so that you may work on the bottom foot area of the base section. Working on the outside of the base rail, locate the bottom rung, draw a horizontal line between the centers of the bottom two rivets of the rung plate. Draw a second line $1/16"$ down from and parallel to the first line. See Figure B. Draw a third vertical line marking the center of the rail. The intersection of line 2 and 3 indicates the location of the first mounting hole to be center punched and drilled with $11/32"$ diameter drill bit. This hole will be drilled through both the rail and the rung plate. Drill two more holes on $4-1/2"$ spacing as indicated by Figure B.

Repeat on opposite side rail. Clean excess fiberglass from drilled holes.

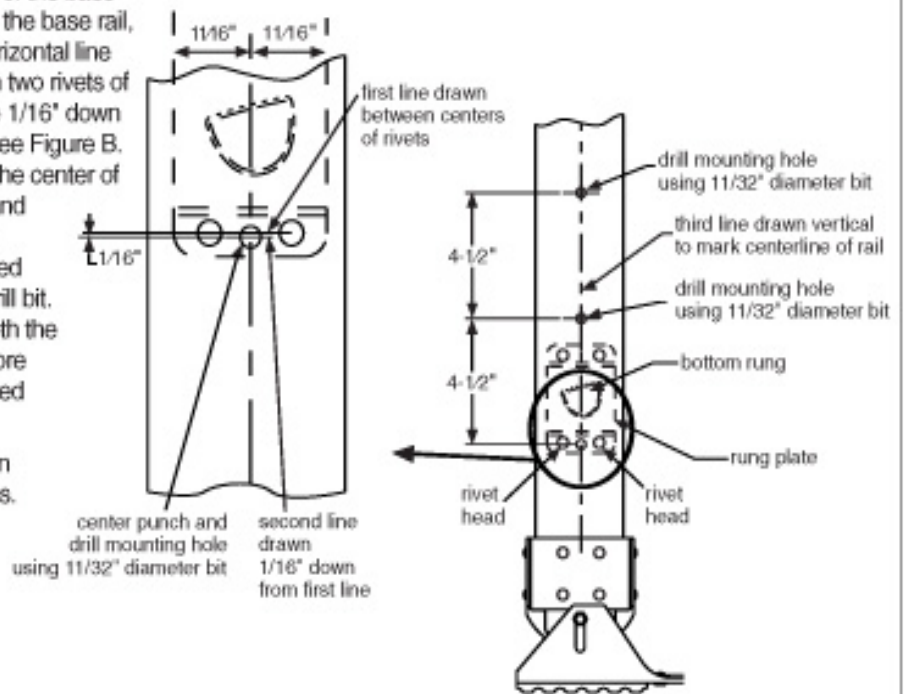


FIGURE B

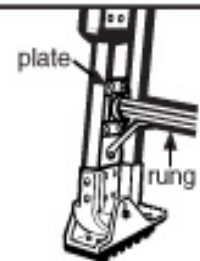


FIGURE A

Continued:

2. Insert a 5/16" diameter mounting bolt, 1-1/4" long, into each of the three mounting holes of the base unit. See Figure C.
3. Place one rectangular aluminum spacer plate over the end of each mounting bolt in the base unit. The orientation of the spacer plates is critical and must be as shown in Figure D. To keep the spacer plates in the proper orientation during installation, squeeze one small drop of metal adhesive between the spacer plate and the base unit. Push and pivot spacer plates a little to smear adhesive and help them adhere to the base unit. **DO NOT GLUE SPACER PLATES OR BASE UNIT TO THE LADDER.** Spacer plates should **ONLY** be glued to the base unit.

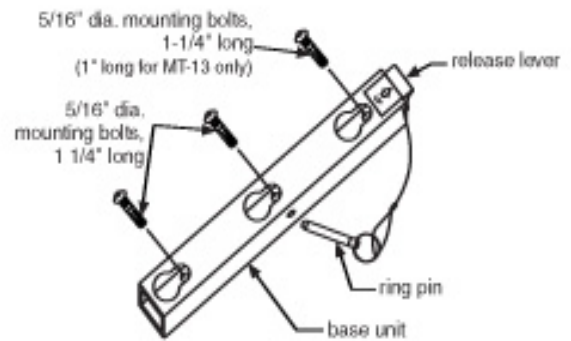


FIGURE C

4. Making sure the base unit marked "Left" is being attached to the left side rail and the base unit marked "Right" is being attached to the right side rail of ladder, insert the mounting bolts of the base unit with attached spacer plates into the drilled mounting holes. Place one large 2" square washer with slot over the end of the top 2 mounting bolts with the slot positioned parallel to the base side rail. Place one 1-1/4" diameter fender washer on top of the 2" square washer for both the top 2 mounting bolts. Tighten locking nuts with 1/2" wrench or socket. Place one 5/8" diameter washer over the end of the bottom mounting bolt and tighten with locking nut. Recommended torque is 9 foot pounds. Use 3/16" hex key (Allen wrench) to hold bolt head in position while tightening nuts with 1/2" wrench or socket. See Figure E.

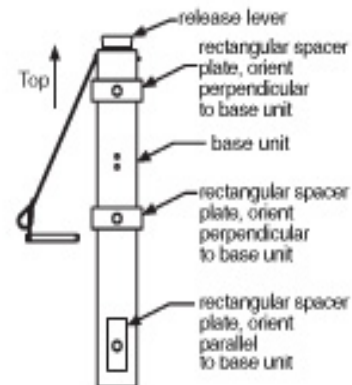


FIGURE D

Go to Step B, Attaching leveler.

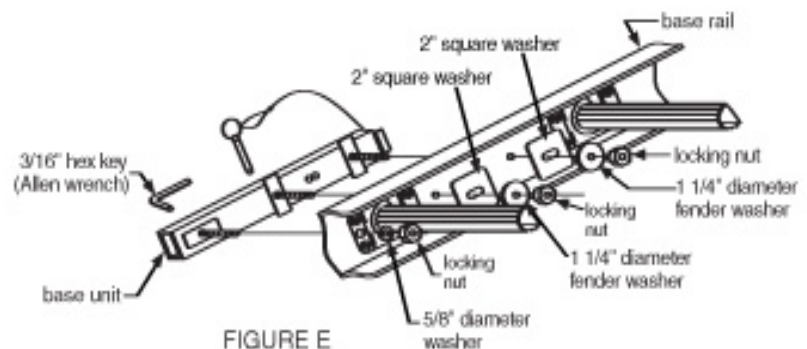


FIGURE E

Continued:

Instructions For Werner Fiberglass Extension Ladders with direct swage construction with bracing only. See Figure F

1. Drilling holes in ladder rails:

Lay the ladder flat on the ground with the base (bottom) section facing down and extend the ladder fly (top) section out of the way so that you may work on the bottom foot area of the base section. Working on the outside of the base rail, draw a vertical line marking the center of the rail. Measure $5\text{-}7/16"$ off of the bottom of the external rail shield; draw a horizontal line at this position. Draw 2 more horizontal lines spaced $4\text{-}1/2"$ apart. See Figure G. The intersection of the vertical line and the 3 horizontal lines indicate the location of the 3 mounting holes to be drilled with $11/32"$ diameter drill bit.

Repeat on opposite side rail. Clean excess fiberglass from drilled holes.

2. Insert a $5/16"$ diameter mounting bolt, $1\text{-}1/4"$ long, into each of the three mounting holes of the base unit. See Figure C.

3. Place two rectangular aluminum spacer plates over the end of each mounting bolt in the base unit. The orientation of the spacer plates is critical and must be as shown in Figure H. To keep the spacer plates in the proper orientation during installation, squeeze one small drop of metal adhesive between the spacer plate and the base unit. Push and pivot spacer plates a little to smear adhesive and help them adhere to the base unit. Repeat gluing procedure to attach the 2nd set of spacer plates to the first set of spacer plates. DO NOT GLUE SPACER PLATES OR BASE UNIT TO THE LADDER. Spacer plates should ONLY be glued to the base unit or other spacer plates.

4. Making sure the base unit marked "Left" is being attached to the left side rail and the base unit marked "Right" is being attached to the right side rail of ladder, insert the mounting bolts of the base unit with attached spacer plates into the drilled mounting holes. Place one $1\text{-}1/4"$ diameter fender washer on each of the mounting bolts. Tighten locking nuts with $1/2"$ wrench or socket. Recommended torque is 9 foot pounds. Use $3/16"$ hex key (Allen wrench) to hold bolt head in position while tightening nuts with $1/2"$ wrench or socket. See Figure I.

Go to Step B, Attaching leveler.

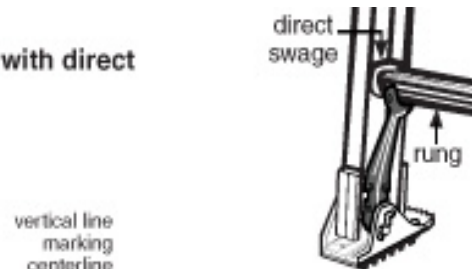


FIGURE F

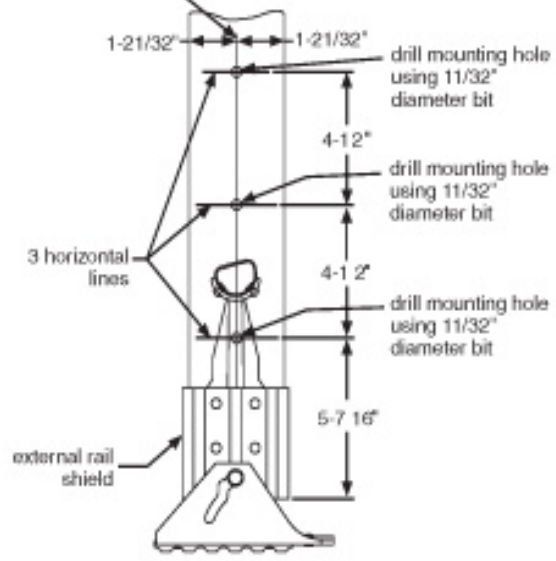


FIGURE G

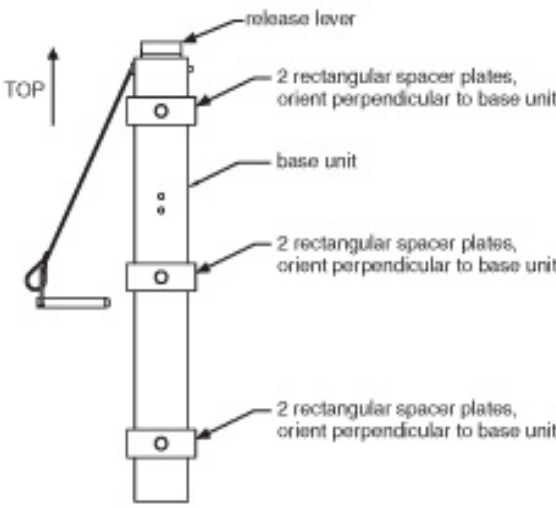


FIGURE H

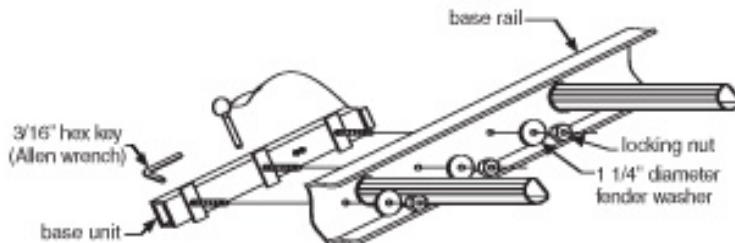


FIGURE I

Continued:

Instructions For Werner Aluminum Extension Ladders with direct swage construction without bracing only. See Figure J.

1. Drilling holes in ladder rails:

Lay the ladder flat on the ground with the base (bottom) section facing down and extend the ladder fly (top) section out of the way so that you may work on the bottom foot area of the base section. Working on the outside of the base rail, draw a vertical line marking the center of the rail. Measure 4" off of the bottom of the rail; draw a horizontal line at this position. Draw 2 more horizontal lines spaced 4-1/2" apart. See Figure K. The intersection of the vertical line and the 3 horizontal lines indicate the location of the 3 mounting holes to be drilled with 11/32" diameter drill bit.

Repeat on opposite side rail. Clean excess aluminum from drilled holes.

2. Insert a 5/16" diameter mounting bolt, 1-1/4" long, into each of the three mounting holes of the base unit. See Figure C.

3. Place two rectangular aluminum spacer plates over the end of each mounting bolt in the base unit. The orientation of the spacer plates is critical and must be as shown in Figure H. To keep the spacer plates in the proper orientation during installation squeeze one small drop of metal adhesive between the spacer plates and the base unit. Push and pivot spacer plates a little to smear adhesive and help them adhere to the base unit. Push and pivot spacer plates a little to smear adhesive and help them adhere to the base unit. Repeat gluing procedure to attach the 2nd spacer plates to the first spacer plates. DO NOT GLUE SPACER PLATES OR BASE UNIT TO THE LADDER. Spacer plates should ONLY be glued to the base unit or other spacer plates.

4. Making sure the base unit marked "Left" is being attached to the left side rail and the base unit marked "Right" is being attached to the right side rail of ladder, insert the mounting bolts of the base unit with attached spacer plates into the drilled mounting holes. Place one 1-1/4" diameter fender washer on each of 2 top mounting bolts. Place one 5/8" diameter washer over the end of the bottom mounting bolt. Tighten locking nuts with 1/2" wrench or socket. Recommended torque is 9 foot pounds. Use 3/16" hex key (Allen wrench) to hold bolt head in position while tightening nuts with 1/2" wrench or socket. See Figure L.

Go to Step B, Attaching leveler.

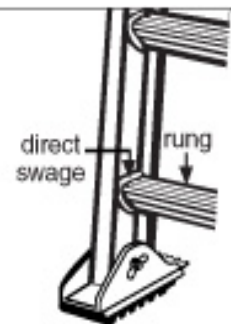


FIGURE J

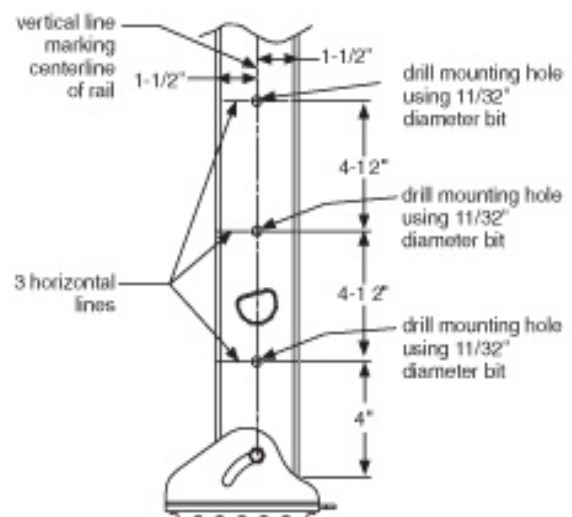


FIGURE K

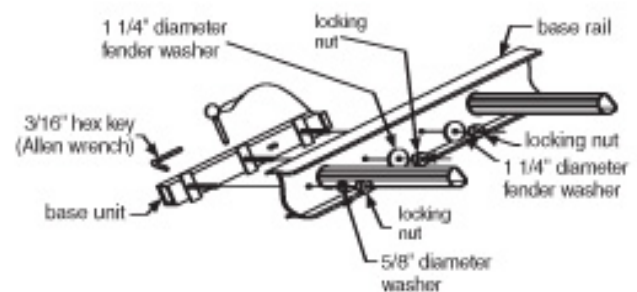


FIGURE L

Continued:

Instructions For Werner Telescoping Multiladder. See Figure M.

1. Drilling holes in ladder rails:

Lay the ladder flat on the ground and extend the ladder inner section out of the way so that you may work on the bottom foot area of the outer section. Working on the outside of the rail, draw a vertical line marking the center of the rail.

Measure 5-1/2" off of the top edge of the rubber foot pad; draw a horizontal line at this position. Draw 2 more horizontal lines spaced 4-1/2" apart. See Figure N. The intersection of the vertical line and the 3 horizontal lines indicate the location of the 3 mounting holes to be drilled with 11/32" diameter drill bit.

Repeat on opposite side rail. Clean excess aluminum from drilled holes.

2. For the MT-17, MT-22, and MT-26 ladders insert a 5/16" diameter mounting bolt, 1-1/4" long, into each of the three mounting holes of the base unit. For the MT-13 ladder insert a 5/16" diameter mounting bolt, 1" long, into the top mounting hole and 1-1/4" long mounting bolts in the lower 2 mounting holes. The shorter bolt at the top mounting location on the MT-13 is necessary for clearance of telescoping section. See Figure C.

3. To keep base unit from rocking side to side when attached to ladder rail, secure strips of foam tape on outermost edges of each base unit. See Figure O.

4. Making sure the base unit marked "Left" is being attached to the left side rail and the base unit marked "Right" is being attached to the right side rail of ladder, insert the mounting bolts of the base unit into the drilled mounting holes. Place one 1-1/4" diameter fender washer on each of the mounting bolts. Tighten locking nuts with 1/2" wrench or socket. Recommended torque is 9 foot pounds. Use 3/16" hex key (Allen wrench) to hold bolt head in position while tightening nuts with 1/2" wrench or socket. See Figure P.

Go to Step B, Attaching leveler.

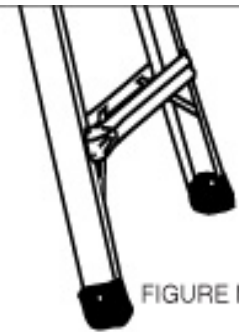


FIGURE M

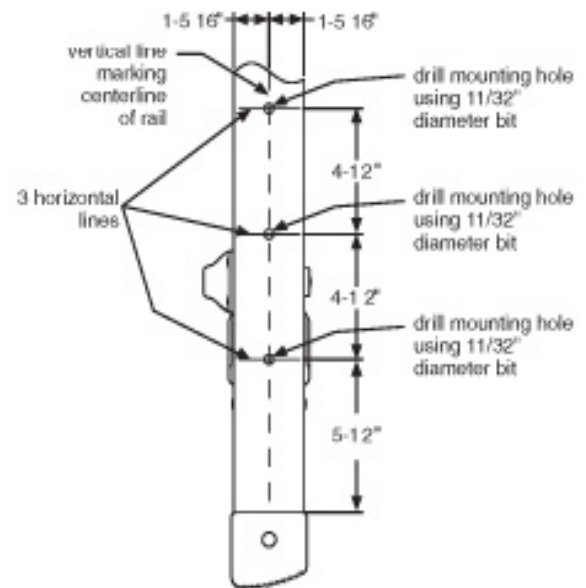


FIGURE N



FIGURE O

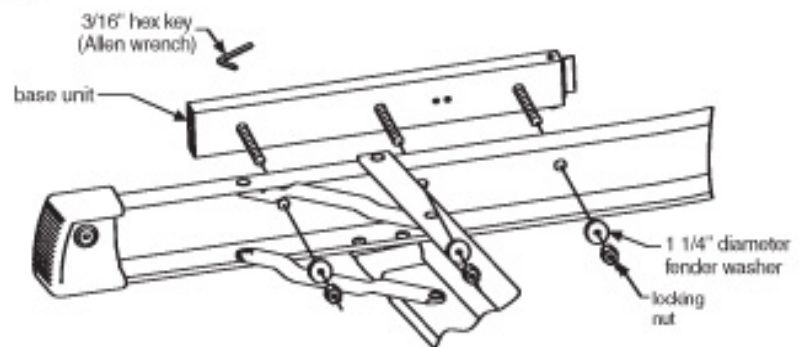


FIGURE P

Step B, Attaching leveler

1. Remove ring pin from base unit. Position the leveler with the shoe toward the bottom of the ladder. Visually align the knobs on the back of the leveler with the keyholes of the base unit. See Figure Q.

EXTREMELY IMPORTANT NOTE: The base unit must be positioned so that the release lever is at the top and pointing up towards the top of the ladder. If it is on the bottom then you must re-install it correctly. The Quick Connect System will not function properly unless installed in this manner. Installing the base unit upside down can cause the base unit latch to release while a person is on the ladder, causing serious injury.

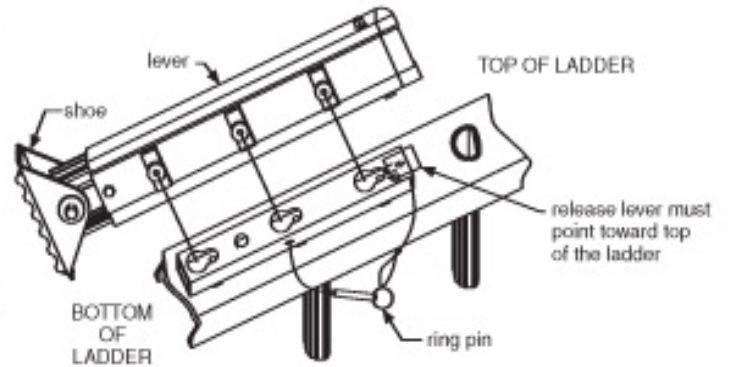


FIGURE Q

2. Insert the knobs located on the back of the leveler, into the bottom area of the key holes on the base unit and slide the leveler up toward the top of the keyhole and ladder until it snap-locks into position. Slide the ring pin back into the hole in the base unit to secure the leveler. This pin functions as a backup for your safety and the security of the leveler.
3. Leveler is ready for use and can remain on the ladder permanently or temporarily if desired.
4. To remove leveler from base unit pull ring pin out of hole in side of base unit. Using index finger of one hand and holding leveler with the other hand, activate release lever at top of base unit. Leveler will drop down and can be pulled away from the base unit.



WERNER CO., 93 WERNER ROAD, GREENVILLE, PA 16125-9499
PHONE (724) 588-8600
www.wernerladder.com