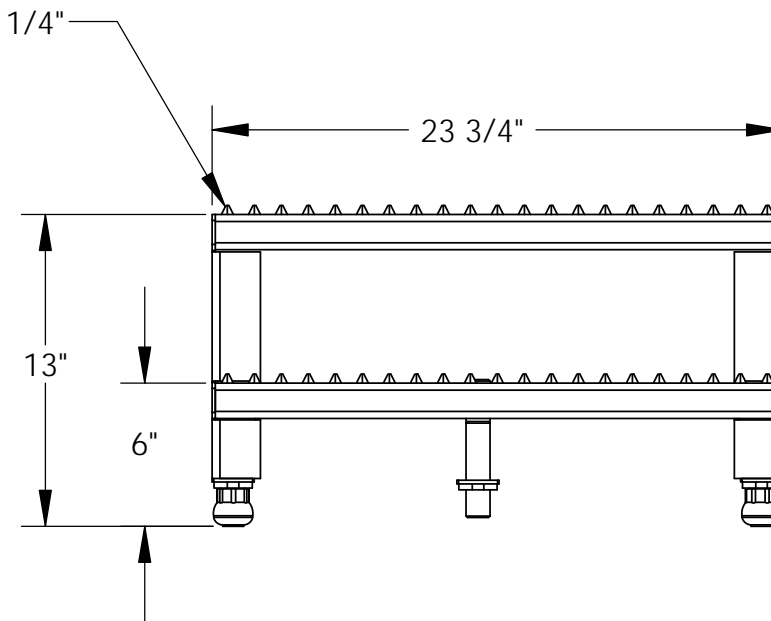
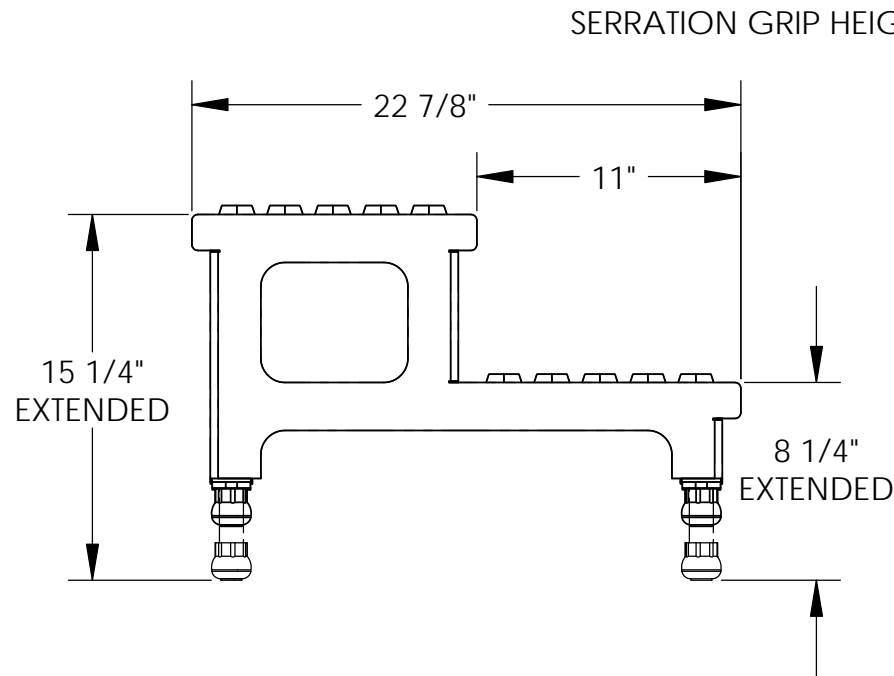


APPROXIMATE WEIGHT IS: 36.48 lbs.

# - ADJUSTABLE STEP-MATE STANDS - MODEL: ASP-24

\*\*\* ANY ADDITIONS, DELETIONS, OR OMISSIONS MUST BE CORRECTED ON THIS DRAWING AS THIS DRAWING WILL BE CONSIDERED ALL INCLUSIVE \*\*\*

ALL GRAPHICS PROVIDED ARE FOR REFERENCE ONLY. IF CERTAIN DIMENSIONS ARE CRITICAL PLEASE VERIFY THOSE DIMENSIONS WITH YOUR SALESPERSON



## STANDARD FEATURES

CAPACITY: 500 LBS  
OVERALL WIDTH IS: 23 3/4"  
OVERALL LENGTH IS: 22 7/8"  
BOTTOM STEP: MIN. 6", MAX. 8 1/4"  
TOP STEP: MIN. 13", MAX. 15 1/4"  
STEPS:  
-SERRATED STEEL 12" DEEP  
PAINT COLOR: YELLOW  
LEGS:  
-ADJUSTABLE  
-ANTI-SLIP TIPS

## SPECIAL FEATURES

NONE

<b>A P P R O V A L</b>	I, THE UNDERSIGNED, AGREE THAT THE PRODUCT AS REPRESENTED SATISFIES DESIGN AND DIMENSION REQUIREMENTS. I ALSO ACKNOWLEDGE MY DUTY TO CONFIRM PRODUCT AND INSTALLATION COMPLIANCE WITH ALL APPLICABLE FEDERAL, STATE AND LOCAL REGULATIONS AND STANDARDS. <b>ALL SPECIAL UNITS ARE NON-RETURNABLE</b>		
	[ ] As drawn [ ] As marked		
	Signed: _____ Date: _____		
	LEAD TIME WILL START UPON RECEIPT OF SIGNED APPROVAL DRAWING		
DISTRIBUTOR'S NAME: <b>VESTIL MANUFACTURING</b>		P.O.# X	
DRAWN BY: W. STALEY		DATE: 12/30/2008	W.O.# X
REFERENCE: X		SCALE: 1:8	SALES: X
		QUOTE # X	FILE NAME: 14-007-049