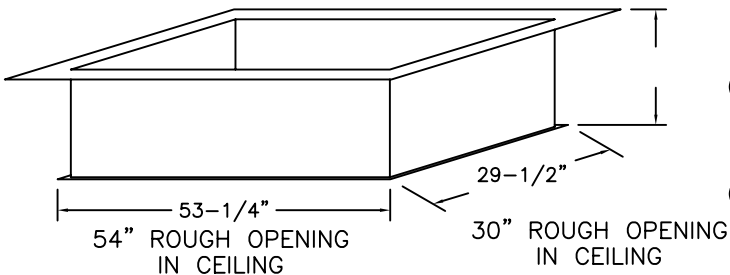


# SUPER SIMPLEX DISAPPEARING STAIRWAY WITH DEEP BOX FRAME TO ROOF HATCH

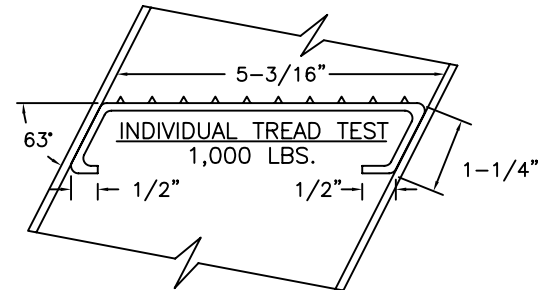
(USE THIS DRAWING FOR CEILING HEIGHTS 9'-9" OR LESS)

FIVE INCH FLANGE  
ALL AROUND TOP  
ONE INCH FLANGE  
ALL AROUND BOTTOM

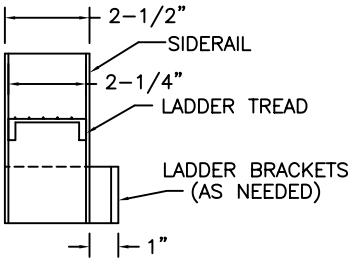


### SPECIAL DEEP BOX FRAME

1/8" STEEL, TO CONTAIN ALUMINUM SUPER SIMPLEX FOLDING STAIRWAY CUT FOR EXACT FINISHED CEILING HEIGHT. THIS FRAME, WITH FACTORY INSTALLED BUILT-IN TREADS, PROVIDES STEPS FROM THE DROPPED-CEILING LINE TO THE UPPER FLOOR.



### FRAME LADDER DETAIL

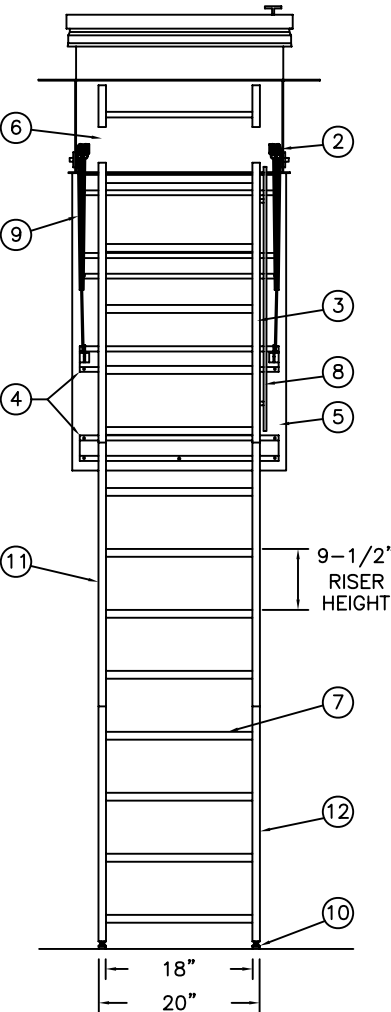


### NOTES

IF FLOOR ABOVE IS MORE THAN 12" ABOVE CEILING LINE, 63 DEGREE ANGLE FRAME IS RECOMMENDED.

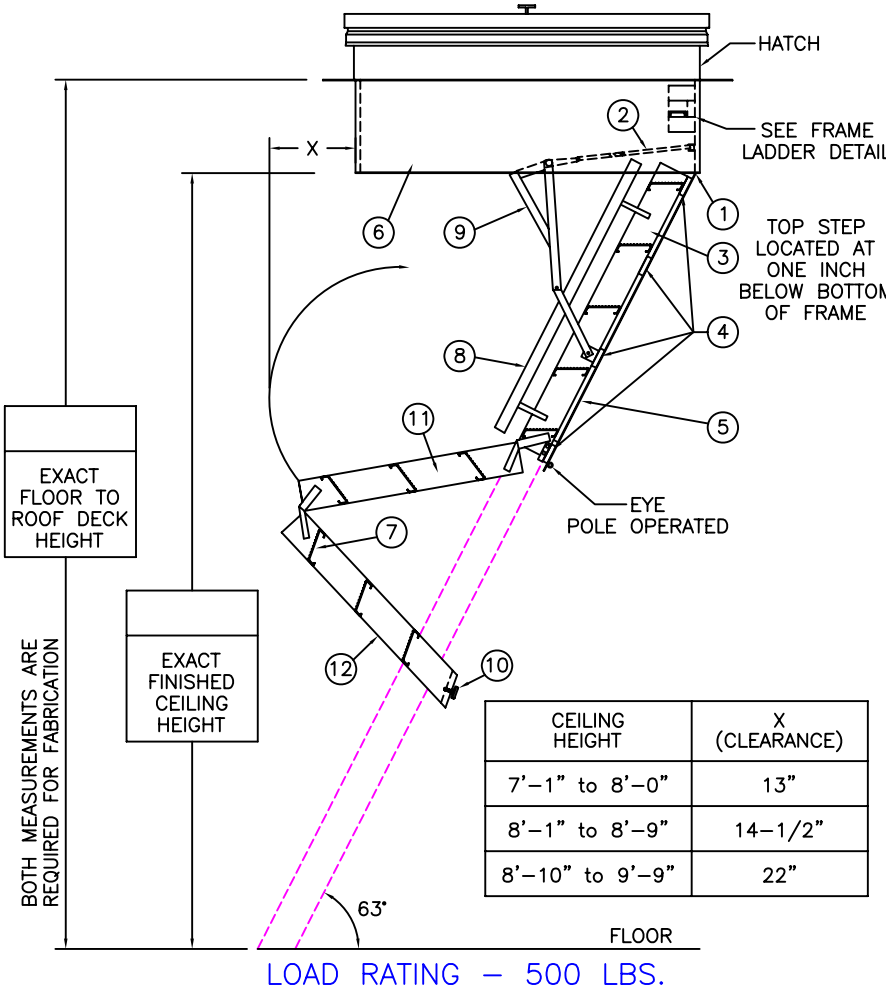
DIMENSIONS ON THIS DRAWING PERTAIN ONLY TO CEILING HEIGHTS 9'-9" OR LESS.

SHIPS COMPLETELY ASSEMBLED AS ONE UNIT



### OPTIONS

- ☐ 2 HOUR FIRE RATED ASSEMBLY
- ☐ LOCK ON DOOR PANEL
- ☐ FOLD ASSIST



### LADDER LEGEND

- 1. STEEL PIANO DOOR HINGE
- 2. DOUBLE SPRING ACTION
- 3. SIDE RUNNER 5" ALUM.
- 4. BATTEN 1/8" ALUM.
- 5. DOOR PANEL 1/8" ALUM.
- 6. STEEL BOX FRAME
- 7. TREAD (SERRATED ALUM.)
- 8. HANDRAIL ON RIGHT SIDE ONLY
- 9. EXTRA HEAVY OPERATING ARM
- 10. ADJUSTABLE FOOT
- 11. MIDDLE SECTION
- 12. BOTTOM SECTION

NOT TO SCALE

S-117-BDH-30

|  |             |                  |              |           |               |      |
|--|-------------|------------------|--------------|-----------|---------------|------|
| <br><b>Precision Ladders, LLC</b><br>P.O. Box 2279 Morristown, TN 37816-2279<br>Ph: (423) 586-2265 Fax: (423) 586-2091<br><a href="http://www.PrecisionLadders.com">www.PrecisionLadders.com</a> | DWG. CHECK  | ARCH'T OR ENG'R. | PROJECT      |           | PRECISION REP |      |
|  | BUILT BY:   | PURCHASE ORDER   | WORK ORDER   | PURCHASER | SERIAL#       |      |
|  | CHECKED BY: | DRAWN BY: JBR    | DATE 7/27/09 | MODEL#    | SS/AL-        | QTY. |