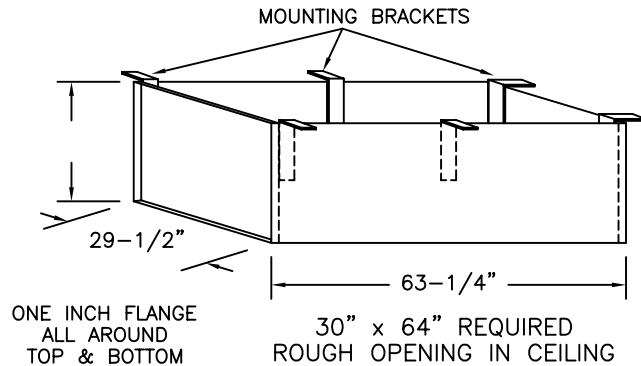
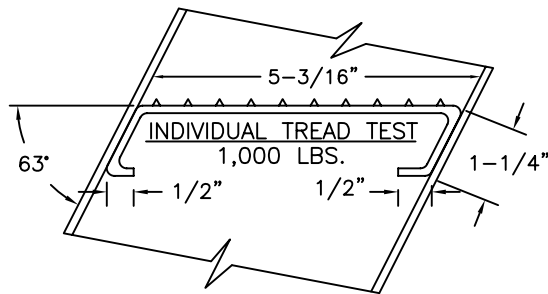


SUPER SIMPLEX DISAPPEARING STAIRWAY WITH STANDARD BOX FRAME

(USE THIS DRAWING FOR CEILING HEIGHTS BETWEEN 9'-10" TO 12'-0")



STANDARD BOX FRAME
FABRICATED FROM 1/8" STEEL
THIS DRAWING ACCOMODATES FRAME DEPTHS
FROM 6" TO 11".



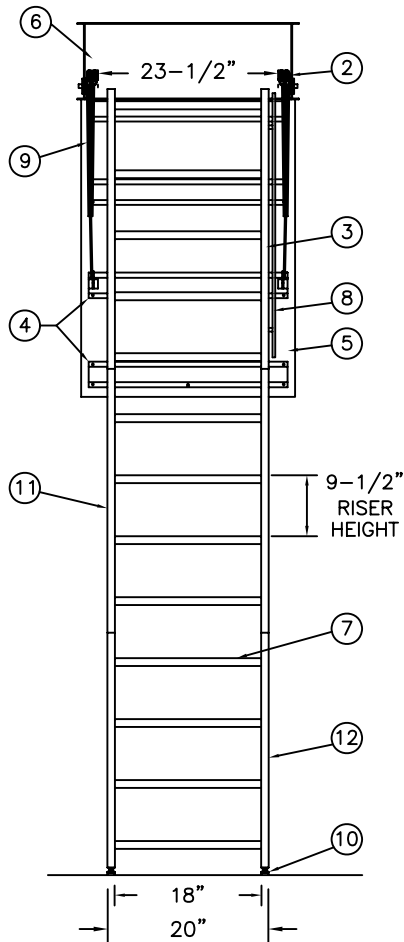
NOTES

IF FLOOR ABOVE IS MORE THAN 12" ABOVE CEILING LINE,
63 DEGREE ANGLE FRAME IS RECOMMENDED.

DIMENSIONS ON THIS DRAWING PERTAIN ONLY TO CEILING
HEIGHTS BETWEEN 9'-10" AND 12'-0" WITH LESS
THAN A 12" FRAME.

SHIPS COMPLETELY ASSEMBLED AS ONE UNIT.

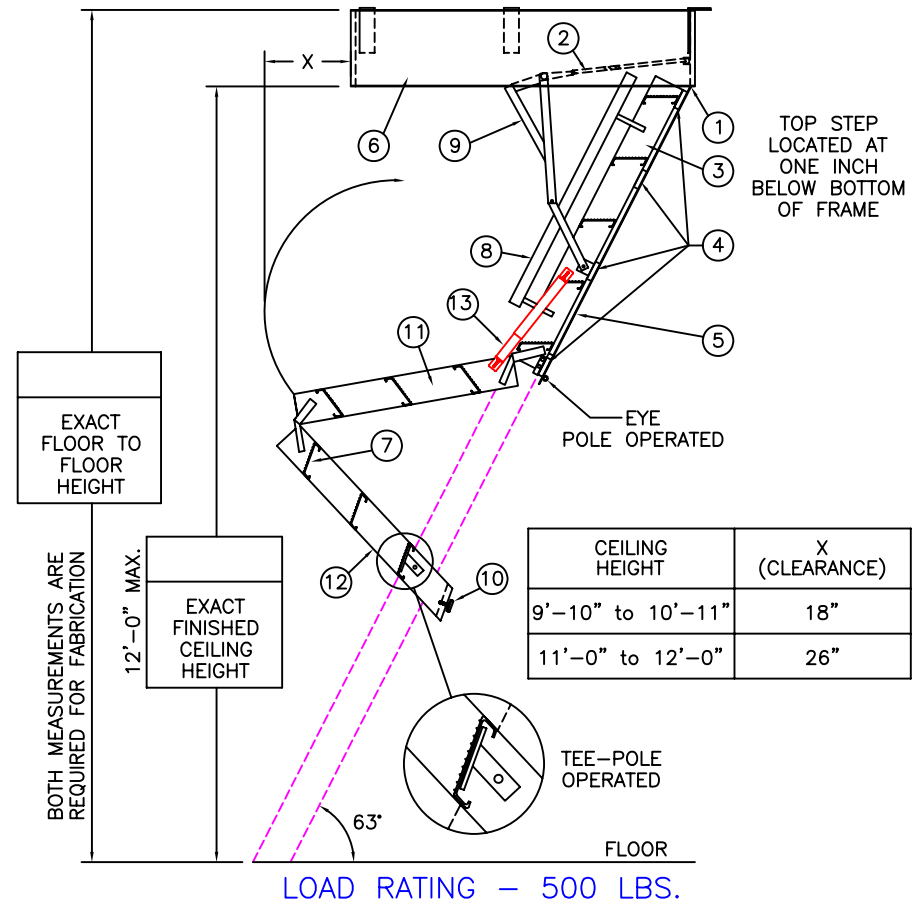
MANUFACTURER RECOMMENDS THAT 2 PEOPLE OPEN/CLOSE
UNITS INSTALLED IN CEILINGS 11' AND OVER.



OPTIONS

- ☐ 2 HOUR FIRE RATED ASSEMBLY
- ☐ LOCK ON DOOR PANEL
- ☐ PRIME PAINT DOOR PANEL (WHITE)

NOT TO SCALE



LADDER LEGEND

- 1. STEEL PIANO DOOR HINGE
- 2. DOUBLE SPRING ACTION
- 3. SIDE RUNNER 5" ALUM.
- 4. BATTEN 1/8" ALUM.
- 5. DOOR PANEL 1/8" ALUM.
- 6. STEEL BOX FRAME
- 7. TREAD (SERRATED ALUM.)
- 8. HANDRAIL RIGHT SIDE ONLY
- 9. EXTRA HEAVY OPERATING ARM
- 10. ADJUSTABLE FOOT
- 11. MIDDLE SECTION
- 12. BOTTOM SECTION
- 13. FOLD-ASSIST

S-144-B-30