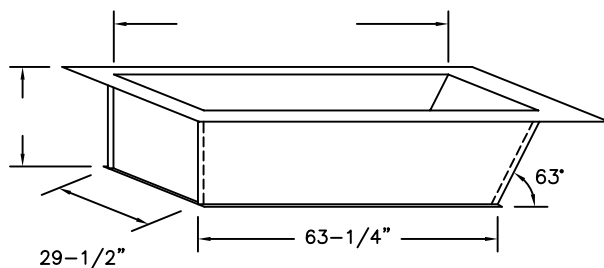


# SUPER SIMPLEX DISAPPEARING STAIRWAY WITH DEEP ANGLE FRAME TO HATCH

(USE THIS DRAWING FOR CEILING HEIGHTS 9'-10" - 12'-0")

FIVE INCH FLANGE  
ALL AROUND TOP  
ONE INCH FLANGE  
ALL AROUND BOTTOM

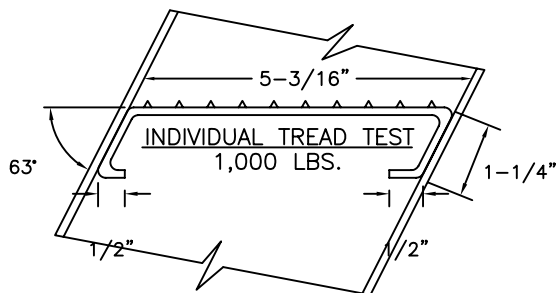
ROUGH OPENING IN FLOOR ABOVE



30" x 64" REQUIRED  
ROUGH OPENING IN CEILING

## SPECIAL DEEP FRAME

1/8" STEEL, 63 DEGREE ANGLE ONE END, 90 DEGREE  
OTHER END, TO CONTAIN SUPER SIMPLEX FOLDING STAIRWAY  
CUT FOR EXACT FINISHED CEILING HEIGHT. THIS FRAME, WITH  
FACTORY INSTALLED BUILT-IN TREADS, PROVIDES STEPS  
FROM THE DROPPED-CEILING LINE TO THE UPPER FLOOR.

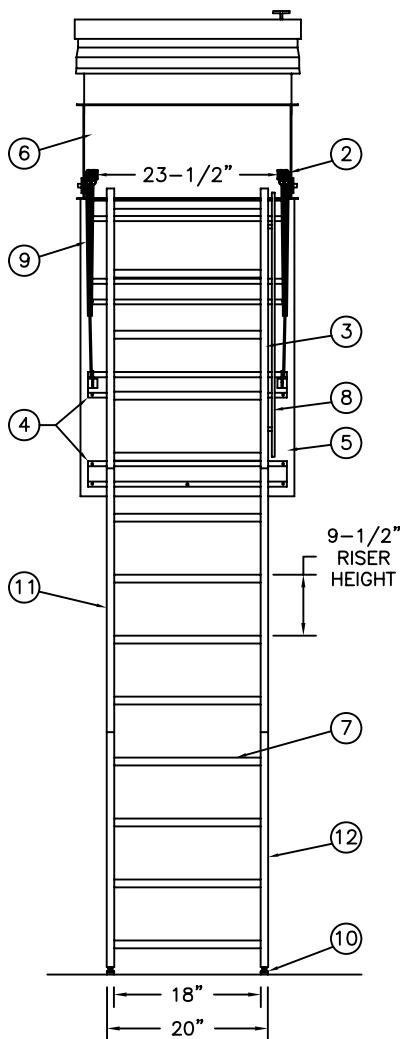


## NOTES

DIMENSIONS ON THIS DRAWING PERTAIN ONLY TO CEILING  
HEIGHTS OVER 9'-9".

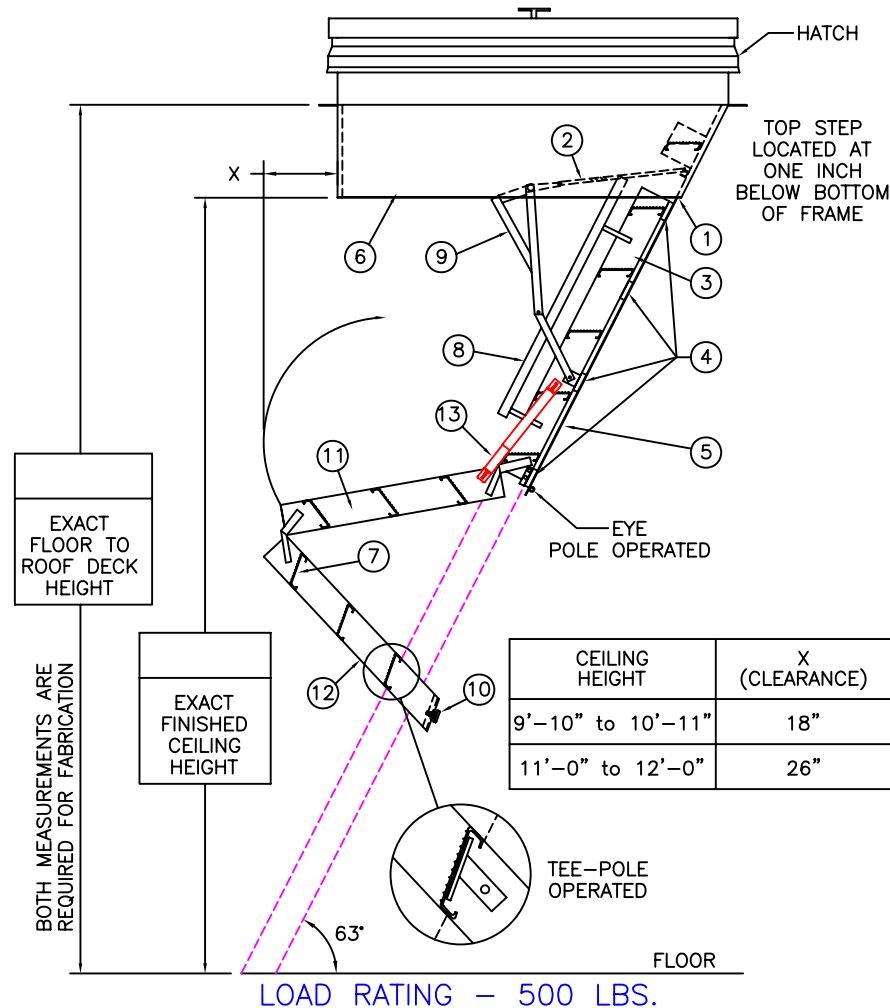
SHIPS COMPLETELY ASSEMBLED AS ONE UNIT

NOT TO SCALE



## OPTIONS

- ☐ 2 HOUR FIRE RATED  
ASSEMBLY
- ☐ LOCK ON DOOR PANEL



## LADDER LEGEND

- 1. STEEL PIANO DOOR HINGE
- 2. DOUBLE SPRING ACTION
- 3. SIDE RUNNER 5" ALUM.
- 4. BATTEN 1/8" ALUM.
- 5. DOOR PANEL 1/8" ALUM.
- 6. STEEL ANGLE FRAME
- 7. TREAD (SERRATED ALUM.)
- 8. HANDRAIL RIGHT SIDE ONLY
- 9. EXTRA HEAVY OPERATING ARM
- 10. ADJUSTABLE FOOT
- 11. MIDDLE SECTION
- 12. BOTTOM SECTION
- 13. FOLD-ASSIST

S-144-AH-30

DWG. CHECK

ARCH'T OR ENG'R.

PROJECT

PRECISION REP

BUILT BY:

PURCHASE ORDER

WORK ORDER

PURCHASER

SERIAL#

CHECKED BY:

DRAWN BY:

JBR

DATE

7/27/09

MODEL#

SS/AL-

QTY.